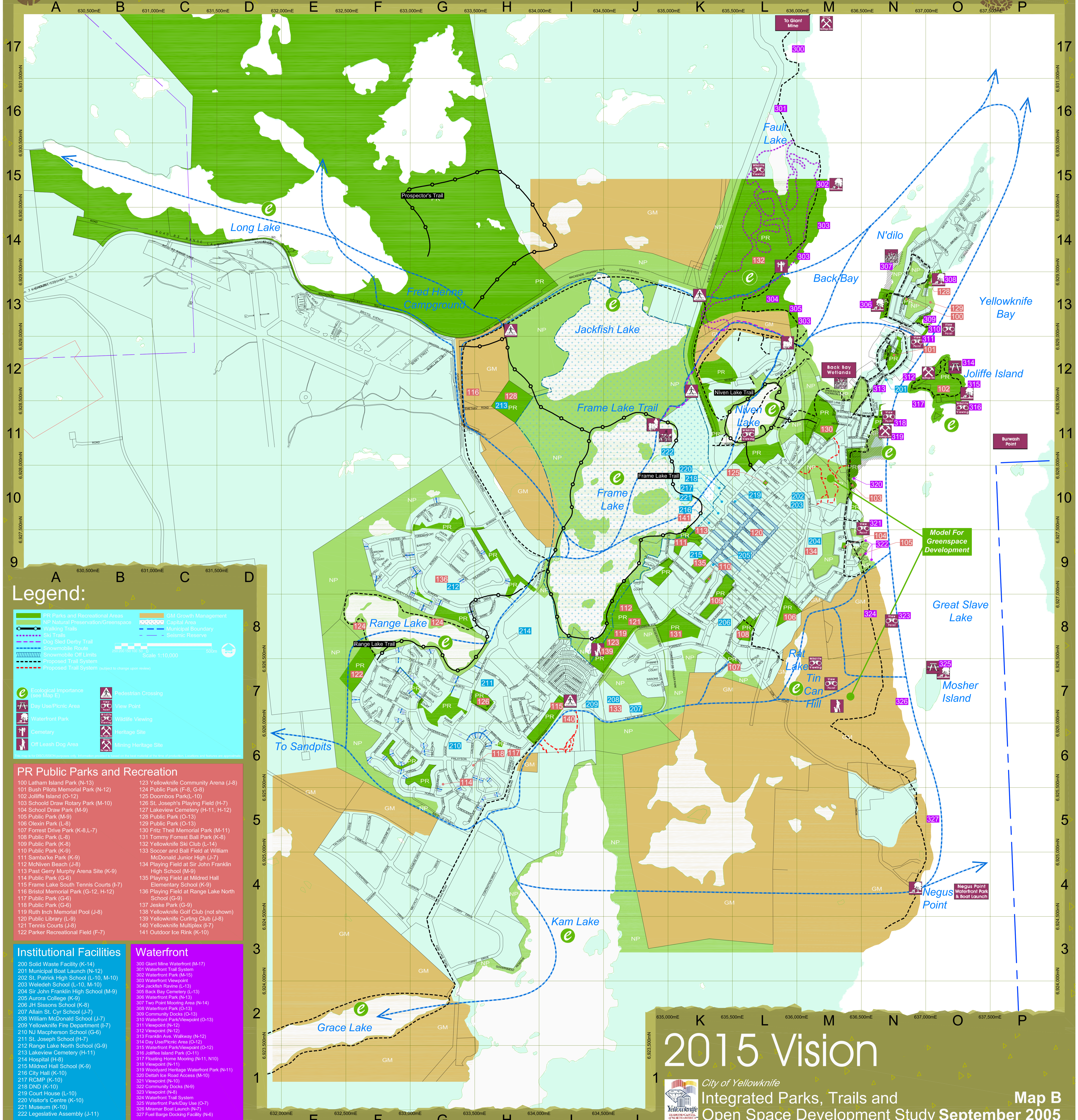


Leave Your Mark



Legend:

PR Parks and Recreational Areas	GM Growth Management
NP Natural Preservation/Greenspace	Capital Area
Walking Trails	Municipal Boundary
Ski Trails	Seismic Reserve
Dog Sled Darry Trail	
Snowmobile Route	
Snowmobile Off Limits	
Proposed Trail System	
Proposed Trail System (subject to change upon review)	

Scale 1:10,000

Ecological Importance (see Map E)	Pedestrian Crossing
Day Use/Picnic Area	View Point
Waterfront Park	Wildlife Viewing
Cemetery	Heritage Site
Off Leash Dog Area	Mining Heritage Site

PR Public Parks and Recreation

- | | |
|--|--|
| 100 Latham Island Park (N-13) | 123 Yellowknife Community Arena (J-8) |
| 101 Bush Pilots Memorial Park (N-12) | 124 Public Park (F-8, G-8) |
| 102 Joliffe Island (O-12) | 125 Doombos Park (L-10) |
| 103 Schoold Draw Rotary Park (M-10) | 126 St. Joseph's Playing Field (H-7) |
| 104 School Draw Park (M-9) | 127 Lakeview Cemetery (H-11, H-12) |
| 105 Public Park (M-9) | 128 Public Park (O-13) |
| 106 Olexin Park (L-8) | 129 Public Park (O-13) |
| 107 Forrest Drive Park (K-8, L-7) | 130 Fritz Theil Memorial Park (M-11) |
| 108 Public Park (L-8) | 131 Tommy Forrest Ball Park (K-8) |
| 109 Public Park (K-8) | 132 Yellowknife Ski Club (L-14) |
| 110 Public Park (K-9) | 133 Soccer and Ball Field at William |
| 111 Sambaka Park (K-9) | McDonald Junior High (J-7) |
| 112 McNeven Beach (J-8) | 134 Playing Field at Sir John Franklin |
| 113 Past Garry Murphy Arena Site (K-9) | High School (M-9) |
| 114 Public Park (G-6) | 135 Playing Field at Mildred Hall |
| 115 Frame Lake South Tennis Courts (I-7) | Elementary School (K-9) |
| 116 Bristol Memorial Park (G-12, H-12) | 136 Playing Field at Range Lake North |
| 117 Public Park (G-6) | School (G-9) |
| 118 Public Park (G-6) | 137 Jesse Park (G-9) |
| 119 Ruth Inch Memorial Pool (J-8) | 138 Yellowknife Golf Club (not shown) |
| 120 Public Library (L-9) | 139 Yellowknife Curling Club (J-8) |
| 121 Tennis Courts (J-8) | 140 Yellowknife Multiplex (I-7) |
| 122 Parker Recreational Field (F-7) | 141 Outdoor Ice Rink (K-10) |

Institutional Facilities

- | |
|--|
| 200 Solid Waste Facility (K-14) |
| 201 Municipal Boat Launch (N-12) |
| 202 St. Patrick High School (L-10, M-10) |
| 203 Weledeh School (L-10, M-10) |
| 204 Sir John Franklin High School (M-9) |
| 205 Aurora College (K-9) |
| 206 JH Sissons School (K-8) |
| 207 Allain St. Cyr School (J-7) |
| 208 William McDonald School (J-7) |
| 209 Yellowknife Fire Department (I-7) |
| 210 N.J. Maccherson School (G-6) |
| 211 St. Joseph School (H-7) |
| 212 Range Lake North School (G-9) |
| 213 Lakeview Cemetery (H-11) |
| 214 Hospital (H-8) |
| 215 Mildred Hall School (K-9) |
| 216 City Hall (K-10) |
| 217 RCMP (K-10) |
| 218 DND (K-10) |
| 219 Court House (L-10) |
| 220 Visitor's Centre (K-10) |
| 221 Museum (K-10) |
| 222 Legislative Assembly (J-11) |

Waterfront

- | |
|--|
| 300 Giant Mine Waterfront (M-17) |
| 301 Waterfront Trail System |
| 302 Waterfront Park (M-15) |
| 303 Waterfront Viewpoint |
| 304 Josephine Ravine (L-13) |
| 305 Back Bay Cemetery (L-13) |
| 306 Waterfront Park (N-13) |
| 307 Two Point Mooring Area (N-14) |
| 308 Waterfront Park (O-13) |
| 309 Community Docks (O-13) |
| 310 Waterfront Park/Viewpoint (O-13) |
| 311 Viewpoint (N-12) |
| 312 Viewpoint (N-12) |
| 313 Franklin Ave. Walkway (N-12) |
| 314 Day Use/Picnic Area (O-12) |
| 315 Waterfront Park/Viewpoint (O-12) |
| 316 Joliffe Island Park (O-11) |
| 317 Floating Home Mooring (N-11, N10) |
| 318 Viewpoint (N-11) |
| 319 Woodyard Heritage Waterfront Park (N-11) |
| 320 Deitah Ice Road Access (M-10) |
| 321 Viewpoint (N-10) |
| 322 Community Docks (N-9) |
| 323 Viewpoint (N-9) |
| 324 Waterfront Trail System |
| 325 Waterfront Park/Day Use (O-7) |
| 326 Miner Boat Launch (N-7) |
| 327 Fuel Barge Docking Facility (N-8) |