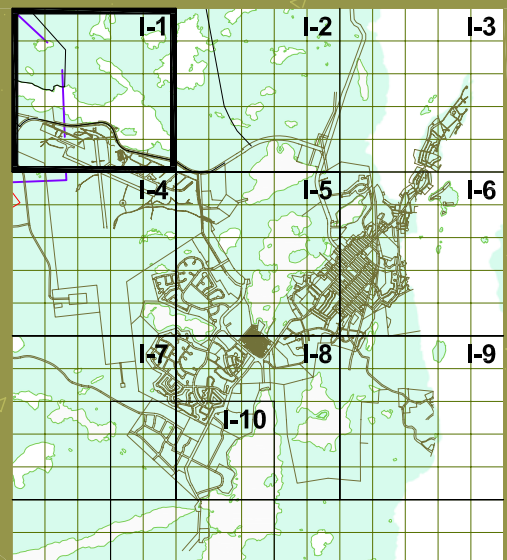




2005 Conditions



City of Yellowknife
 Integrated Parks, Trails and
 Open Space Development Study **Map A I-1**
 September 2005



Legend:

- PR Parks and Recreational Areas
- NP Natural Preservation/Greenspace
- Walking Trails
- Ski Trails
- Dog Sled Derby Trail
- Snowmobile Route
- Snowmobile Off Limits
- GM Growth Management
- Capital Area
- Municipal Boundary
- Seismic Reserve

PR Public Parks and Recreation

- | | |
|--|---|
| 100 Latham Island Park (N-13) | 123 Yellowknife Community Arena (J-8) |
| 101 Bush Pilots Memorial Park (N-12) | 124 Public Park (F-8, G-8) |
| 102 Jolliffe Island (O-12) | 125 Doombos Park (L-10) |
| 103 Schoold Draw Rotary Park (M-10) | 126 St. Joseph's Playing Field (H-7) |
| 104 School Draw Park (M-9) | 127 Lakeview Cemetery (H-11, H-12) |
| 105 Public Park (M-9) | 128 Public Park (O-13) |
| 106 Olexin Park (L-8) | 129 Public Park (O-13) |
| 107 Forrest Drive Park (K-8, L-7) | 130 Fritz Thell Memorial Park (M-11) |
| 108 Public Park (L-8) | 131 Tommy Forrest Ball Park (K-8) |
| 109 Public Park (K-8) | 132 Yellowknife Ski Club (L-14) |
| 110 Public Park (K-9) | 133 Soccer and Ball Field at William McDonald Junior High (J-7) |
| 111 Samba'ke Park (K-9) | 134 Playing Field at Sir John Franklin High School (M-9) |
| 112 McNiven Beach (J-8) | 135 Playing Field at Mildred Hall Elementary School (K-9) |
| 113 Past Gerry Murphy Arena Site (K-9) | 136 Playing Field at Range Lake North School (G-9) |
| 114 Public Park (G-6) | 137 Jeske Park (G-9) |
| 115 Frame Lake South Tennis Courts (I-7) | 138 Yellowknife Golf Club (not shown) |
| 116 Bristol Memorial Park (G-12, H-12) | 139 Yellowknife Curling Club (J-8) |
| 117 Public Park (G-6) | 140 Yellowknife Multiplex (I-7) |
| 118 Public Park (G-6) | 141 Outdoor Ice Rink (K-10) |
| 119 Ruth Inch Memorial Pool (J-8) | |
| 120 Public Library (L-9) | |
| 121 Tennis Courts (J-8) | |
| 122 Parker Recreational Field (F-7) | |

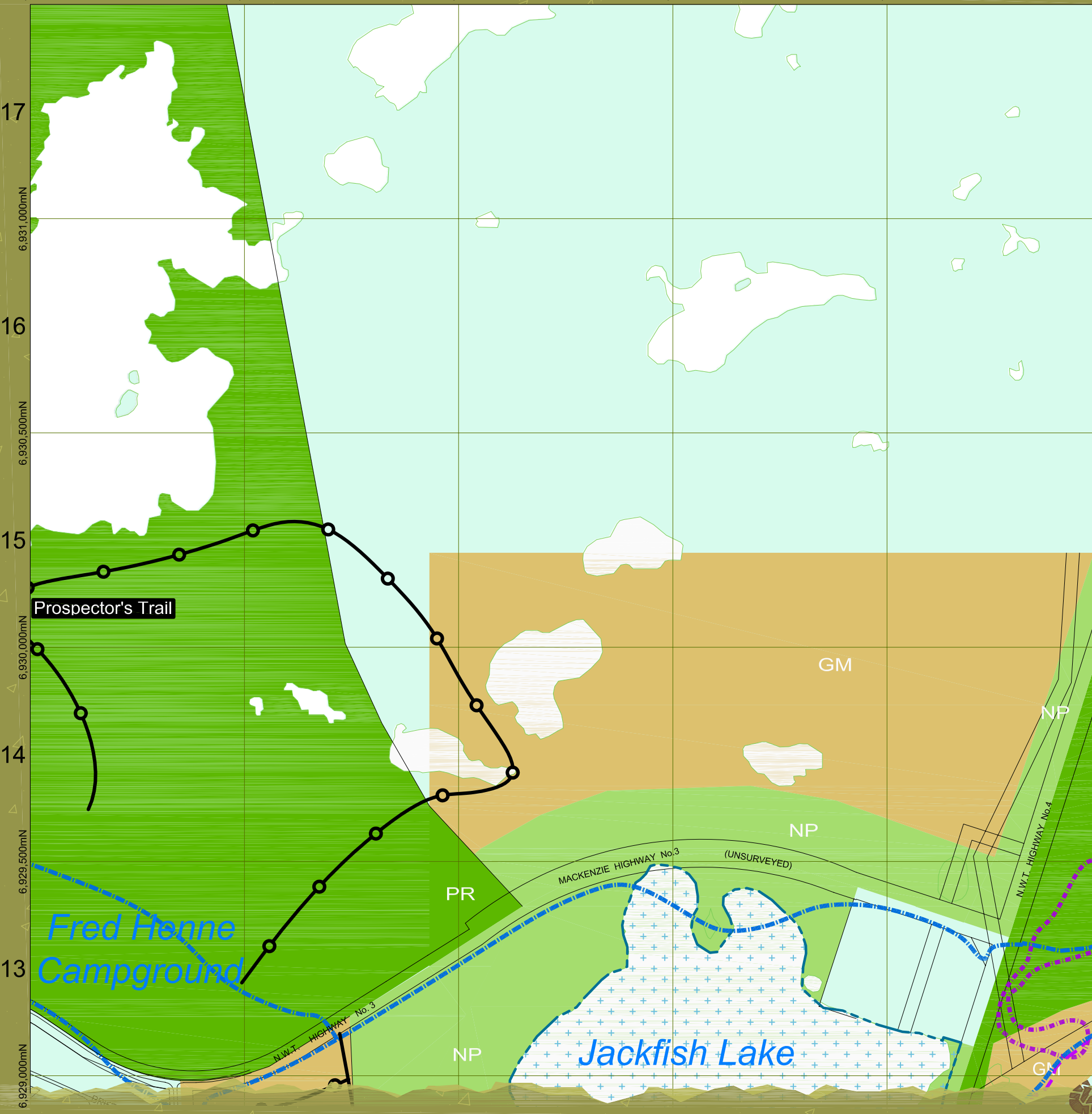
Institutional Facilities

- | | |
|--|-----------------------------------|
| 200 Solid Waste Facility (K-14) | 212 Range Lake North School (G-9) |
| 201 Municipal Boat Launch (N-12) | 213 Lakeview Cemetery (H-11) |
| 202 St. Patrick High School (L-10, M-10) | 214 Hospital (H-8) |
| 203 Weledeh School (L-10, M-10) | 215 Mildred Hall School (K-9) |
| 204 Sir John Franklin High School (M-9) | 216 City Hall (K-10) |
| 205 Aurora College (K-9) | 217 RCMP (K-10) |
| 206 JH Sissons School (K-8) | 218 DND (K-10) |
| 207 Allain St. Cyr School (J-7) | 219 Court House (L-10) |
| 208 William McDonald School (J-7) | 220 Visitor's Centre (K-10) |
| 209 Yellowknife Fire Department (I-7) | 221 Museum (K-10) |
| 210 NJ Macpherson School (G-8) | 222 Legislative Assembly (J-11) |
| 211 St. Joseph School (H-7) | |

This map is for DISCUSSION purposes only. Information provided is based on the best material at the time of production. Locations and features are approximate.



633,000mE G 633,500mE H 634,000mE I 634,500mE J 635,000mE K



2005 Conditions

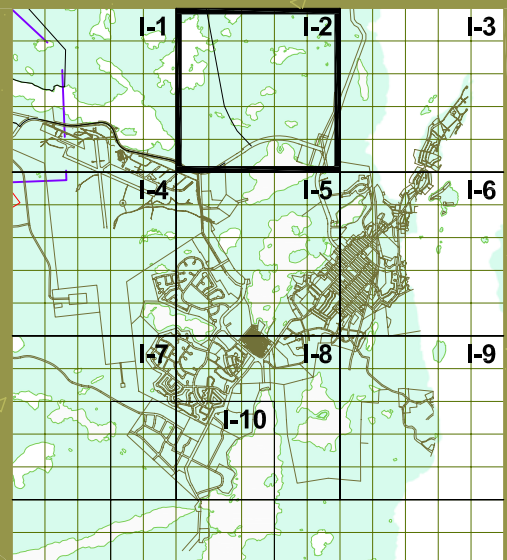


City of Yellowknife
 Integrated Parks, Trails and
 Open Space Development Study **Map A I-2**
 September 2005



Legend:

- PR Parks and Recreational Areas
- NP Natural Preservation/Greenspace
- Walking Trails
- Ski Trails
- Dog Sled Derby Trail
- Snowmobile Route
- Snowmobile Off Limits
- GM Growth Management
- Capital Area
- Municipal Boundary
- Seismic Reserve



PR Public Parks and Recreation

- | | |
|--|---|
| 100 Latham Island Park (N-13) | 123 Yellowknife Community Arena (J-8) |
| 101 Bush Pilots Memorial Park (N-12) | 124 Public Park (F-8, G-8) |
| 102 Jolliffe Island (O-12) | 125 Doombos Park (L-10) |
| 103 Schook Draw Rotary Park (M-10) | 126 St. Joseph's Playing Field (H-7) |
| 104 School Draw Park (M-9) | 127 Lakeview Cemetery (H-11, H-12) |
| 105 Public Park (M-9) | 128 Public Park (O-13) |
| 106 Olexin Park (L-8) | 129 Public Park (O-13) |
| 107 Forrest Drive Park (K-8, L-7) | 130 Fitz Thell Memorial Park (M-11) |
| 108 Public Park (L-8) | 131 Tommy Forrest Ball Park (K-8) |
| 109 Public Park (K-8) | 132 Yellowknife Ski Club (L-14) |
| 110 Public Park (K-9) | 133 Soccer and Ball Field at William McDonald Junior High (J-7) |
| 111 Samba'ke Park (K-9) | 134 Playing Field at Sir John Franklin High School (M-9) |
| 112 McIven Beach (J-8) | 135 Playing Field at Mildred Hall Elementary School (K-9) |
| 113 Past Gerry Murphy Arena Site (K-9) | 136 Playing Field at Range Lake North School (G-9) |
| 114 Public Park (G-6) | 137 Jeske Park (G-9) |
| 115 Frame Lake South Tennis Courts (I-7) | 138 Yellowknife Golf Club (not shown) |
| 116 Bristol Memorial Park (G-12, H-12) | 139 Yellowknife Curling Club (J-8) |
| 117 Public Park (G-6) | 140 Yellowknife Multiplex (I-7) |
| 118 Public Park (G-6) | 141 Outdoor Ice Rink (K-10) |
| 119 Ruth Inch Memorial Pool (J-8) | |
| 120 Public Library (L-9) | |
| 121 Tennis Courts (J-8) | |
| 122 Parker Recreational Field (F-7) | |

Institutional Facilities

- | | |
|--|-----------------------------------|
| 200 Solid Waste Facility (K-14) | 212 Range Lake North School (G-9) |
| 201 Municipal Boat Launch (N-12) | 213 Lakeview Cemetery (H-11) |
| 202 St. Patrick High School (L-10, M-10) | 214 Hospital (H-8) |
| 203 Weledah School (L-10, M-10) | 215 Mildred Hall School (K-9) |
| 204 St. John Franklin High School (M-9) | 216 City Hall (K-10) |
| 205 Aurora College (K-9) | 217 RCMP (K-10) |
| 206 JH Sissons School (K-8) | 218 DND (K-10) |
| 207 Allain St. Cyr School (J-7) | 219 Court House (L-10) |
| 208 William McDonald School (J-7) | 220 Visitor's Centre (K-10) |
| 209 Yellowknife Fire Department (I-7) | 221 Museum (K-10) |
| 210 NJ Macpherson School (G-8) | 222 Legislative Assembly (J-11) |
| 211 St. Joseph School (H-7) | |

This map is for DISCUSSION purposes only. Information provided is based on the best material at the time of production. Locations and features are approximate.

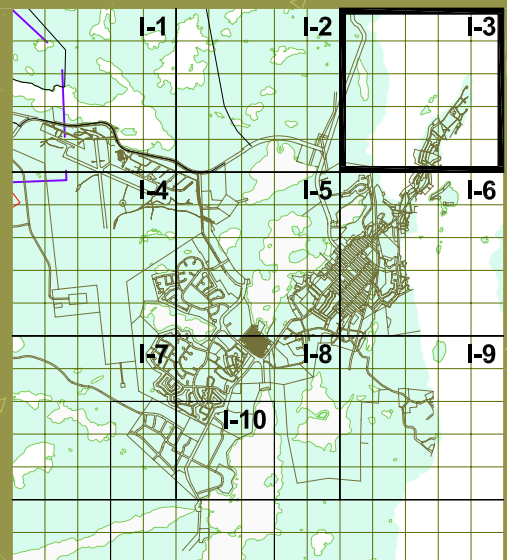
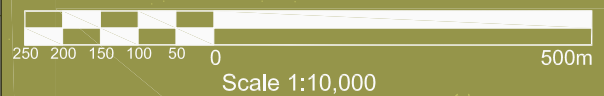
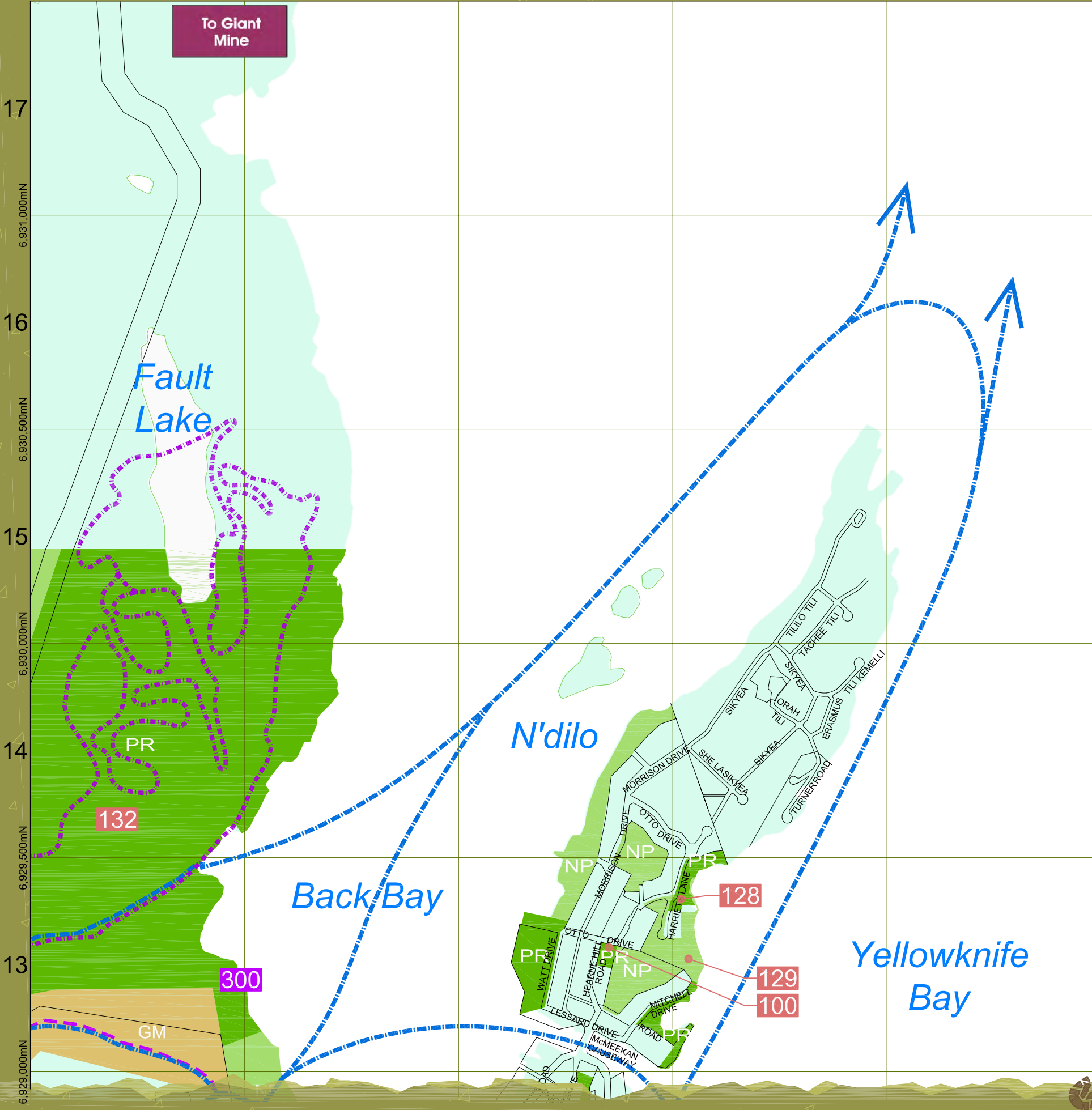


635,500mE L M 636,000mE 636,500mE N O 637,500mE P

2005 Conditions



City of Yellowknife
 Integrated Parks, Trails and
 Open Space Development Study **Map A I-3**
 September 2005



Legend:

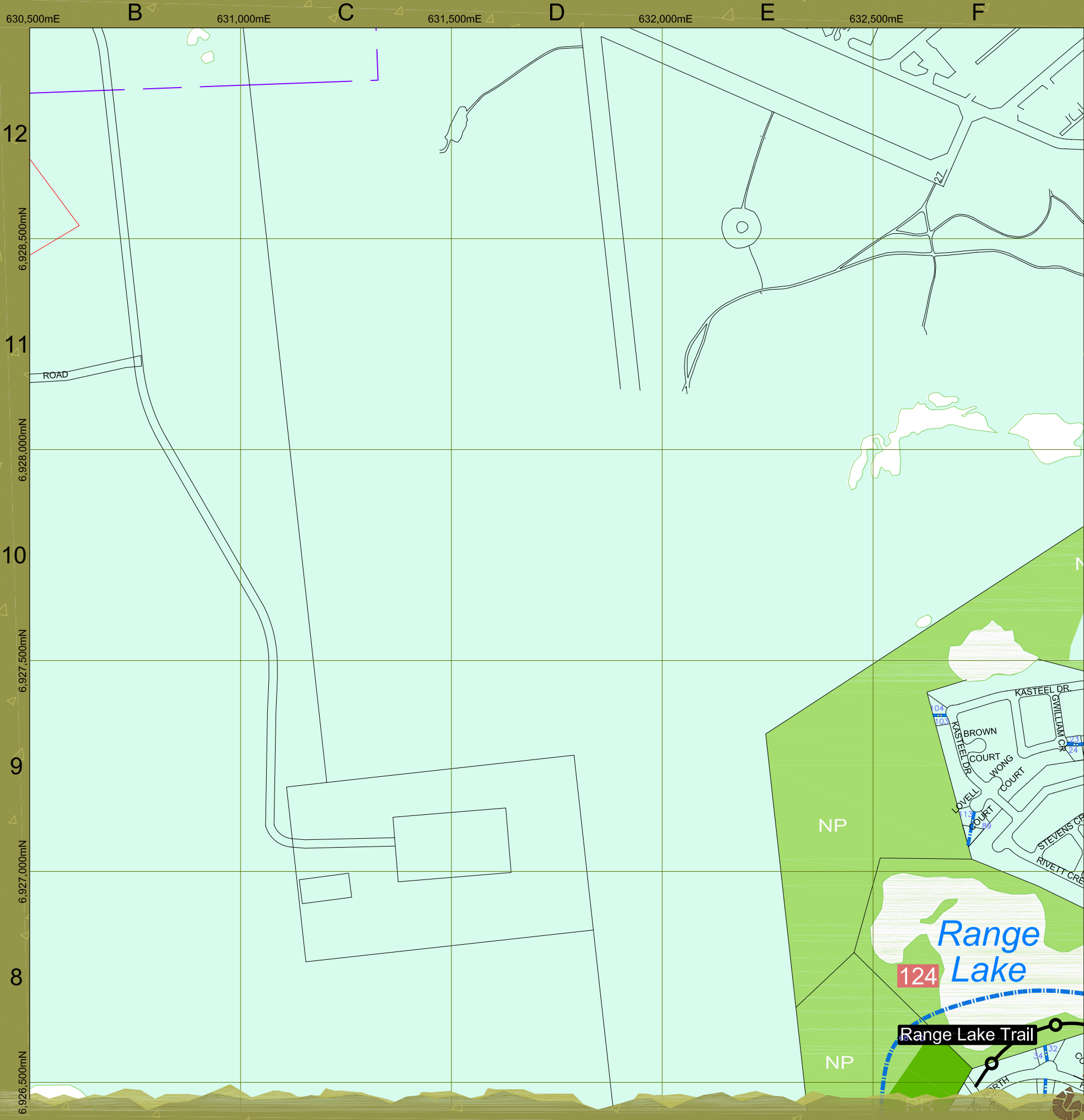
- PR Parks and Recreational Areas
- NP Natural Preservation/Greenspace
- Walking Trails
- Ski Trails
- Dog Sled Derby Trail
- Snowmobile Route
- Snowmobile Off Limits
- GM Growth Management
- Capital Area
- Municipal Boundary
- Seismic Reserve

PR Public Parks and Recreation	
100 Latham Island Park (N-13)	123 Yellowknife Community Arena (J-8)
101 Bush Pilots Memorial Park (N-12)	124 Public Park (F-8, G-8)
102 Jolliffe Island (O-12)	125 Doombos Park(L-10)
103 Schoold Draw Rotary Park (M-10)	126 St. Joseph's Playing Field (H-7)
104 School Draw Park (M-9)	127 Lakeview Cemetery (H-11, H-12)
105 Public Park (M-9)	128 Public Park (O-13)
106 Olexin Park (L-8)	129 Public Park (O-13)
107 Forrest Drive Park (K-8,L-7)	130 Fritz Thell Memorial Park (M-11)
108 Public Park (L-8)	131 Tommy Forrest Ball Park (K-8)
109 Public Park (K-8)	132 Yellowknife Ski Club (L-14)
110 Public Park (K-9)	133 Soccer and Ball Field at William McDonald Junior High (J-7)
111 Samba'ke Park (K-9)	134 Playing Field at Sir John Franklin High School (M-9)
112 McNiven Beach (J-8)	135 Playing Field at Mildred Hall Elementary School (K-9)
113 Past Gerry Murphy Arena Site (K-9)	136 Playing Field at Range Lake North School (G-9)
114 Public Park (G-6)	137 Jeske Park (G-9)
115 Frame Lake South Tennis Courts (I-7)	138 Yellowknife Golf Club (not shown)
116 Bristol Memorial Park (G-12, H-12)	139 Yellowknife Curling Club (J-8)
117 Public Park (G-6)	140 Yellowknife Multiplex (I-7)
118 Public Park (G-6)	141 Outdoor Ice Rink (K-10)
119 Ruth Inch Memorial Pool (J-8)	
120 Public Library (L-9)	
121 Tennis Courts (J-8)	
122 Parker Recreational Field (F-7)	

Institutional Facilities	
200 Solid Waste Facility (K-14)	212 Range Lake North School (G-9)
201 Municipal Boat Launch (N-12)	213 Lakeview Cemetery (H-11)
202 St. Patrick High School (L-10, M-10)	214 Hospital (H-8)
203 Weledah School (L-10, M-10)	215 Mildred Hall School (K-9)
204 Sir John Franklin High School (M-9)	216 City Hall (K-10)
205 Aurora College (K-9)	217 RCMP (K-10)
206 JH Sissons School (K-8)	218 DND (K-10)
207 Allain St. Cyr School (J-7)	219 Court House (L-10)
208 William McDonald School (J-7)	220 Visitor's Centre (K-10)
209 Yellowknife Fire Department (I-7)	221 Museum (K-10)
210 NJ Macpherson School (G-8)	222 Legislative Assembly (J-11)
211 St. Joseph School (H-7)	

This map is for DISCUSSION purposes only. Information provided is based on the best material at the time of production. Locations and features are approximate.

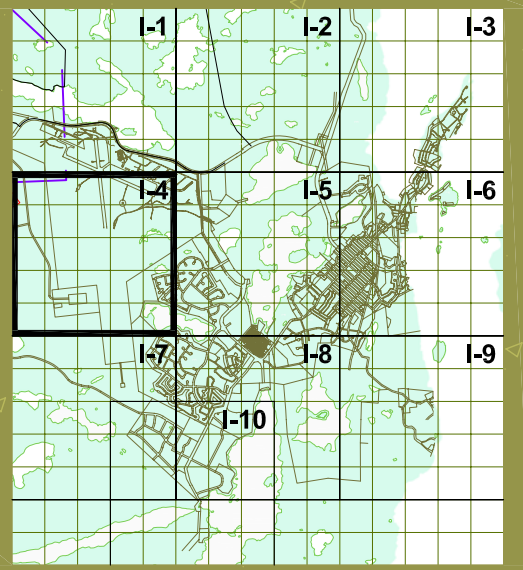
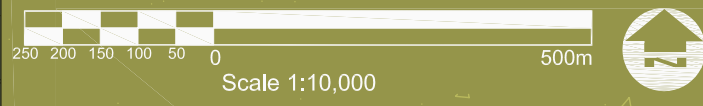




2005 Conditions



City of Yellowknife
 Integrated Parks, Trails and
 Open Space Development Study **Map A I-4**
 September 2005



Legend:

- PR Parks and Recreational Areas
- NP Natural Preservation/Greenspace
- Walking Trails
- Ski Trails
- Dog Sled Derby Trail
- Snowmobile Route
- Snowmobile Off Limits
- GM Growth Management
- Capital Area
- Municipal Boundary
- Seismic Reserve

PR Public Parks and Recreation

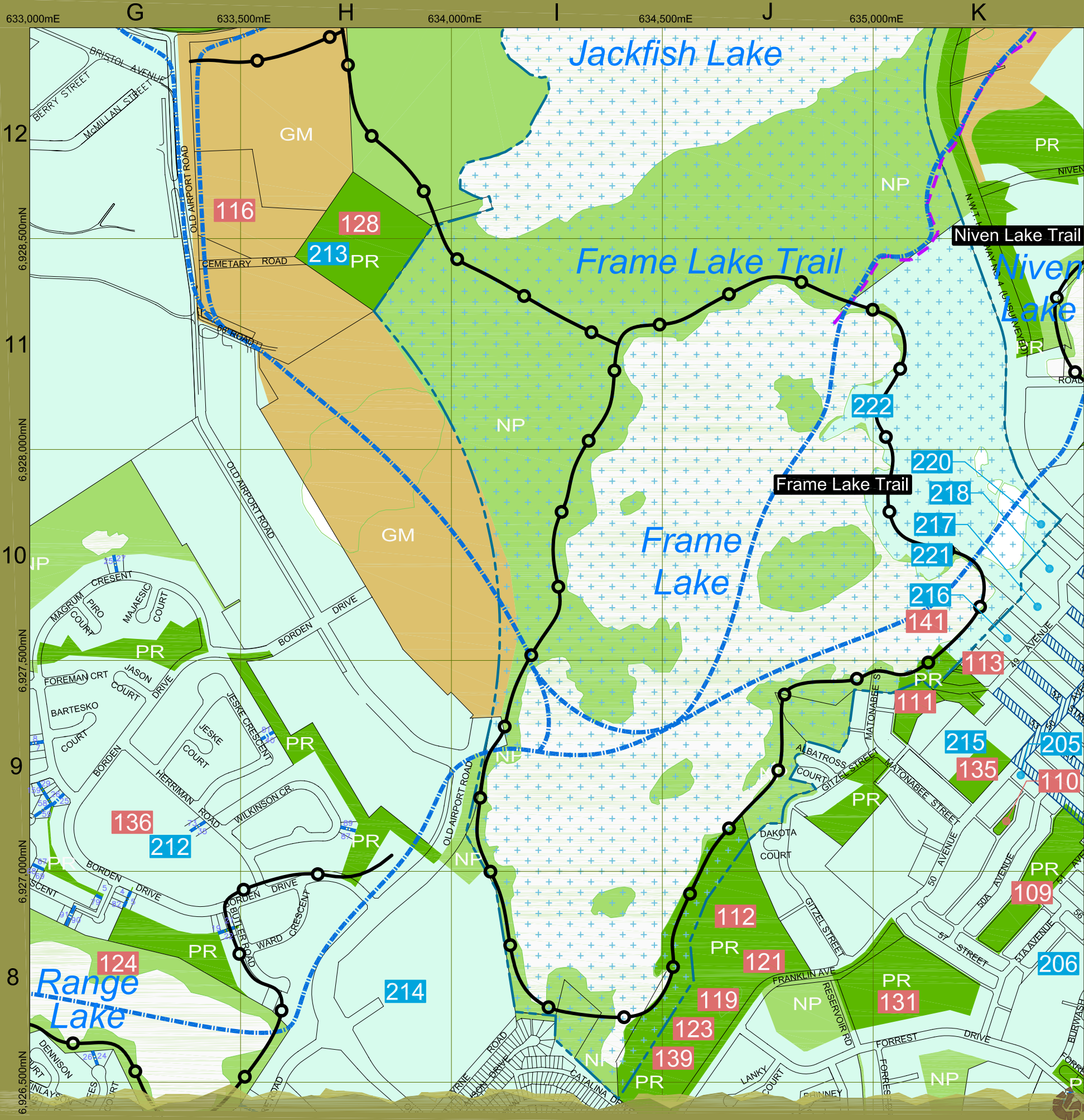
- | | |
|--|---|
| 100 Latham Island Park (N-13) | 123 Yellowknife Community Arena (J-8) |
| 101 Bush Pilots Memorial Park (N-12) | 124 Public Park (F-8, G-8) |
| 102 Jolliffe Island (O-12) | 125 Doombos Park (L-10) |
| 103 Schoold Draw Rotary Park (M-10) | 126 St. Joseph's Playing Field (H-7) |
| 104 School Draw Park (M-9) | 127 Lakeview Cemetery (H-11, H-12) |
| 105 Public Park (M-9) | 128 Public Park (O-13) |
| 106 Olexin Park (L-8) | 129 Public Park (O-13) |
| 107 Forrest Drive Park (K-8, L-7) | 130 Fritz Thell Memorial Park (M-11) |
| 108 Public Park (L-8) | 131 Tommy Forrest Ball Park (K-8) |
| 109 Public Park (K-8) | 132 Yellowknife Ski Club (L-14) |
| 110 Public Park (K-9) | 133 Soccer and Ball Field at William McDonald Junior High (J-7) |
| 111 Samba'ke Park (K-9) | 134 Playing Field at Sir John Franklin High School (M-9) |
| 112 McNiven Beach (J-8) | 135 Playing Field at Mildred Hall Elementary School (K-9) |
| 113 Past Gerry Murphy Arena Site (K-9) | 136 Playing Field at Range Lake North School (G-9) |
| 114 Public Park (G-6) | 137 Jeske Park (G-9) |
| 115 Frame Lake South Tennis Courts (I-7) | 138 Yellowknife Golf Club (not shown) |
| 116 Bristol Memorial Park (G-12, H-12) | 139 Yellowknife Curling Club (J-8) |
| 117 Public Park (G-6) | 140 Yellowknife Multiplex (I-7) |
| 118 Public Park (G-6) | 141 Outdoor Ice Rink (K-10) |
| 119 Ruth Inch Memorial Pool (J-8) | |
| 120 Public Library (L-9) | |
| 121 Tennis Courts (J-8) | |
| 122 Parker Recreational Field (F-7) | |

Institutional Facilities

- | | |
|--|-----------------------------------|
| 200 Solid Waste Facility (K-14) | 212 Range Lake North School (G-9) |
| 201 Municipal Boat Launch (N-12) | 213 Lakeview Cemetery (H-11) |
| 202 St. Patrick High School (L-10, M-10) | 214 Hospital (H-8) |
| 203 Weledah School (L-10, M-10) | 215 Mildred Hall School (K-9) |
| 204 St. John Franklin High School (M-9) | 216 City Hall (K-10) |
| 205 Aurora College (K-9) | 217 RCMP (K-10) |
| 206 JH Sissons School (K-8) | 218 DND (K-10) |
| 207 Allain St. Cyr School (J-7) | 219 Court House (L-10) |
| 208 William McDonald School (J-7) | 220 Visitor's Centre (K-10) |
| 209 Yellowknife Fire Department (I-7) | 221 Museum (K-10) |
| 210 NJ Macpherson School (G-8) | 222 Legislative Assembly (J-11) |
| 211 St. Joseph School (H-7) | |

This map is for DISCUSSION purposes only. Information provided is based on the best material at the time of production. Locations and features are approximate.





2005 Conditions

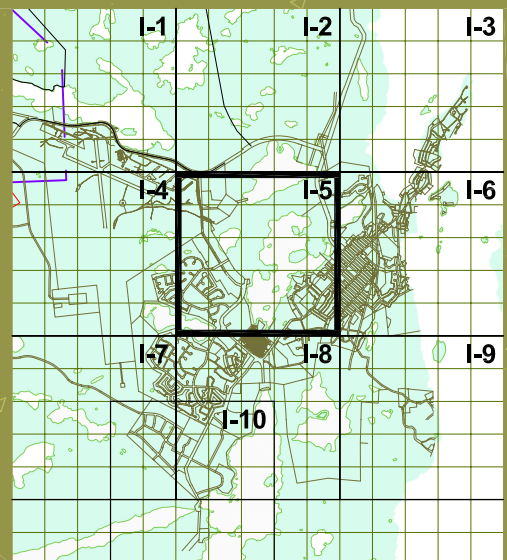


City of Yellowknife
 Integrated Parks, Trails and
 Open Space Development Study **Map A I-5**
 September 2005



Legend:

- PR Parks and Recreational Areas
- NP Natural Preservation/Greenspace
- Walking Trails
- Ski Trails
- Dog Sled Derby Trail
- Snowmobile Route
- Snowmobile Off Limits
- GM Growth Management
- Capital Area
- Municipal Boundary
- Seismic Reserve



PR Public Parks and Recreation

- | | |
|--|---|
| 100 Latham Island Park (N-13) | 123 Yellowknife Community Arena (J-8) |
| 101 Bush Pilots Memorial Park (N-12) | 124 Public Park (F-8, G-8) |
| 102 Jolliffe Island (O-12) | 125 Doombos Park (L-10) |
| 103 Schoold Draw Rotary Park (M-10) | 126 St. Joseph's Playing Field (H-7) |
| 104 School Draw Park (M-9) | 127 Lakeview Cemetery (H-11, H-12) |
| 105 Public Park (M-9) | 128 Public Park (O-13) |
| 106 Olexin Park (L-8) | 129 Public Park (O-13) |
| 107 Forrest Drive Park (K-8, L-7) | 130 Fritz Theil Memorial Park (M-11) |
| 108 Public Park (L-8) | 131 Tommy Forrest Ball Park (K-8) |
| 109 Public Park (K-8) | 132 Yellowknife Ski Club (L-14) |
| 110 Public Park (K-9) | 133 Soccer and Ball Field at William McDonald Junior High (J-7) |
| 111 Samba'ke Park (K-9) | 134 Playing Field at Sir John Franklin High School (M-9) |
| 112 McNiven Beach (J-8) | 135 Playing Field at Mildred Hall Elementary School (K-9) |
| 113 Past Gerry Murphy Arena Site (K-9) | 136 Playing Field at Range Lake North School (G-9) |
| 114 Public Park (G-6) | 137 Jeske Park (G-9) |
| 115 Frame Lake South Tennis Courts (I-7) | 138 Yellowknife Golf Club (not shown) |
| 116 Bristol Memorial Park (G-12, H-12) | 139 Yellowknife Curling Club (J-8) |
| 117 Public Park (G-6) | 140 Yellowknife Multiplex (I-7) |
| 118 Public Park (G-6) | 141 Outdoor Ice Rink (K-10) |
| 119 Ruth Inch Memorial Pool (J-8) | |
| 120 Public Library (L-9) | |
| 121 Tennis Courts (J-8) | |
| 122 Parker Recreational Field (F-7) | |

Institutional Facilities

- | | |
|--|-----------------------------------|
| 200 Solid Waste Facility (K-14) | 212 Range Lake North School (G-9) |
| 201 Municipal Boat Launch (N-12) | 213 Lakeview Cemetery (H-11) |
| 202 St. Patrick High School (L-10, M-10) | 214 Hospital (H-8) |
| 203 Weledeh School (L-10, M-10) | 215 Mildred Hall School (K-9) |
| 204 Sir John Franklin High School (M-9) | 216 City Hall (K-10) |
| 205 Aurora College (K-9) | 217 RCMP (K-10) |
| 206 JH Sissons School (K-8) | 218 DND (K-10) |
| 207 Allain St. Cyr School (J-7) | 219 Court House (L-10) |
| 208 William McDonald School (J-7) | 220 Visitor's Centre (K-10) |
| 209 Yellowknife Fire Department (I-7) | 221 Museum (K-10) |
| 210 NJ Macpherson School (G-8) | 222 Legislative Assembly (J-11) |
| 211 St. Joseph School (H-7) | |

This map is for DISCUSSION purposes only. Information provided is based on the best material at the time of production. Locations and features are approximate.

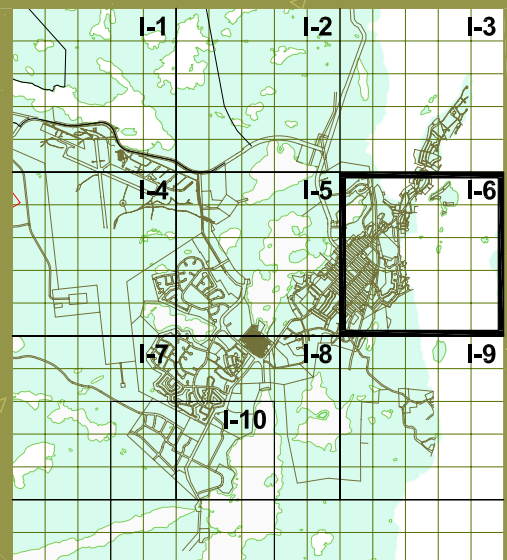
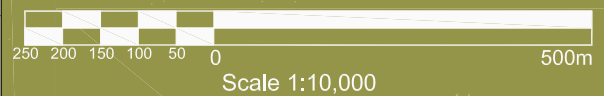
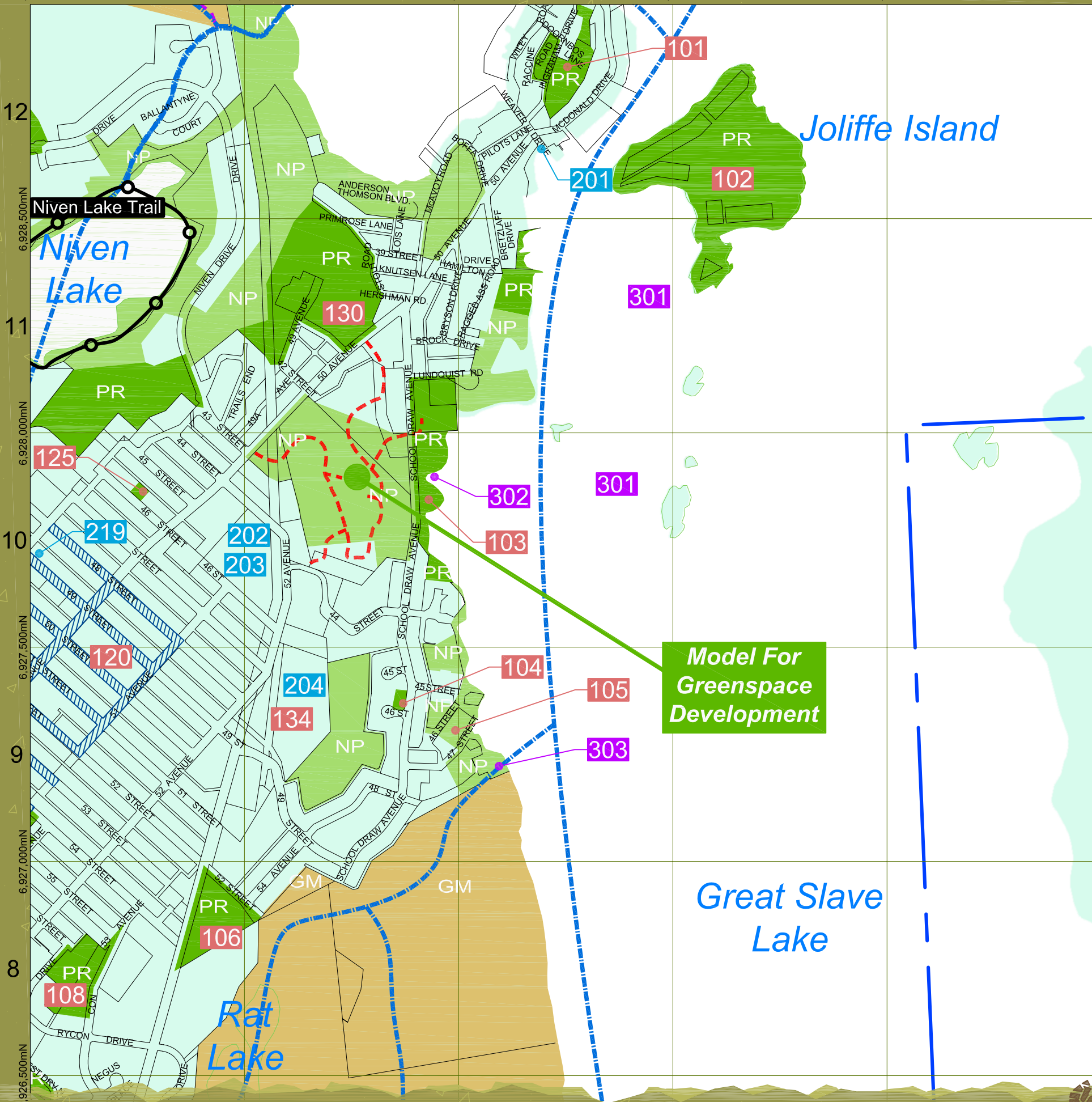
Leave Your Mark

635,500mE L 636,000mE M 636,500mE N 637,000mE O 637,500mE P

2005 Conditions



City of Yellowknife
 Integrated Parks, Trails and
 Open Space Development Study **Map A I-6**
 September 2005



Legend:

- PR Parks and Recreational Areas
- NP Natural Preservation/Greenspace
- Walking Trails
- Ski Trails
- Dog Sled Derby Trail
- Snowmobile Route
- Snowmobile Off Limits
- GM Growth Management
- Capital Area
- Municipal Boundary
- Seismic Reserve

PR Public Parks and Recreation

- | | |
|--|---|
| 100 Latham Island Park (N-13) | 123 Yellowknife Community Arena (J-8) |
| 101 Bush Pilots Memorial Park (N-12) | 124 Public Park (F-8, G-8) |
| 102 Joliffe Island (O-12) | 125 Doombos Park (L-10) |
| 103 School Draw Rotary Park (M-10) | 126 St. Joseph's Playing Field (H-7) |
| 104 School Draw Park (M-9) | 127 Lakeview Cemetery (H-11, H-12) |
| 105 Public Park (M-9) | 128 Public Park (O-13) |
| 106 Olexin Park (L-8) | 129 Public Park (O-13) |
| 107 Forrest Drive Park (K-8, L-7) | 130 Fritz Thell Memorial Park (M-11) |
| 108 Public Park (L-8) | 131 Tommy Forrest Ball Park (K-8) |
| 109 Public Park (K-8) | 132 Yellowknife Ski Club (L-14) |
| 110 Public Park (K-9) | 133 Soccer and Ball Field at William McDonald Junior High (J-7) |
| 111 Samba'ke Park (K-9) | 134 Playing Field at Sir John Franklin High School (M-9) |
| 112 McNiven Beach (J-8) | 135 Playing Field at Mildred Hall Elementary School (K-9) |
| 113 Past Gerry Murphy Arena Site (K-9) | 136 Playing Field at Range Lake North School (G-9) |
| 114 Public Park (G-6) | 137 Jeske Park (G-9) |
| 115 Frame Lake South Tennis Courts (I-7) | 138 Yellowknife Golf Club (not shown) |
| 116 Bristol Memorial Park (G-12, H-12) | 139 Yellowknife Curling Club (J-8) |
| 117 Public Park (G-6) | 140 Yellowknife Multiplex (I-7) |
| 118 Public Park (G-6) | 141 Outdoor Ice Rink (K-10) |
| 119 Ruth Inch Memorial Pool (J-8) | |
| 120 Public Library (L-9) | |
| 121 Tennis Courts (J-8) | |
| 122 Parker Recreational Field (F-7) | |

Institutional Facilities

- | | |
|--|-----------------------------------|
| 200 Solid Waste Facility (K-14) | 212 Range Lake North School (G-9) |
| 201 Municipal Boat Launch (N-12) | 213 Lakeview Cemetery (H-11) |
| 202 St. Patrick High School (L-10, M-10) | 214 Hospital (H-8) |
| 203 Weledah School (L-10, M-10) | 215 Mildred Hall School (K-9) |
| 204 Sir John Franklin High School (M-9) | 216 City Hall (K-10) |
| 205 Aurora College (K-9) | 217 RCMP (K-10) |
| 206 JH Sissons School (K-8) | 218 DND (K-10) |
| 207 Allain St. Cyr School (J-7) | 219 Court House (L-10) |
| 208 William McDonald School (J-7) | 220 Visitor's Centre (K-10) |
| 209 Yellowknife Fire Department (I-7) | 221 Museum (K-10) |
| 210 NJ Macpherson School (G-8) | 222 Legislative Assembly (J-11) |
| 211 St. Joseph School (H-7) | |

This map is for DISCUSSION purposes only. Information provided is based on the best material at the time of production. Locations and features are approximate.





2005 Conditions

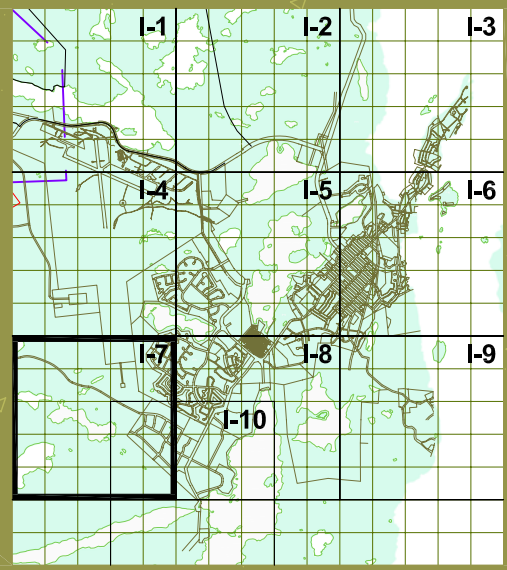


City of Yellowknife
 Integrated Parks, Trails and
 Open Space Development Study **Map A I-7**
 September 2005



Legend:

- PR Parks and Recreational Areas
- NP Natural Preservation/Greenspace
- Walking Trails
- Ski Trails
- Dog Sled Derby Trail
- Snowmobile Route
- Snowmobile Off Limits
- GM Growth Management
- Capital Area
- Municipal Boundary
- Seismic Reserve



PR Public Parks and Recreation

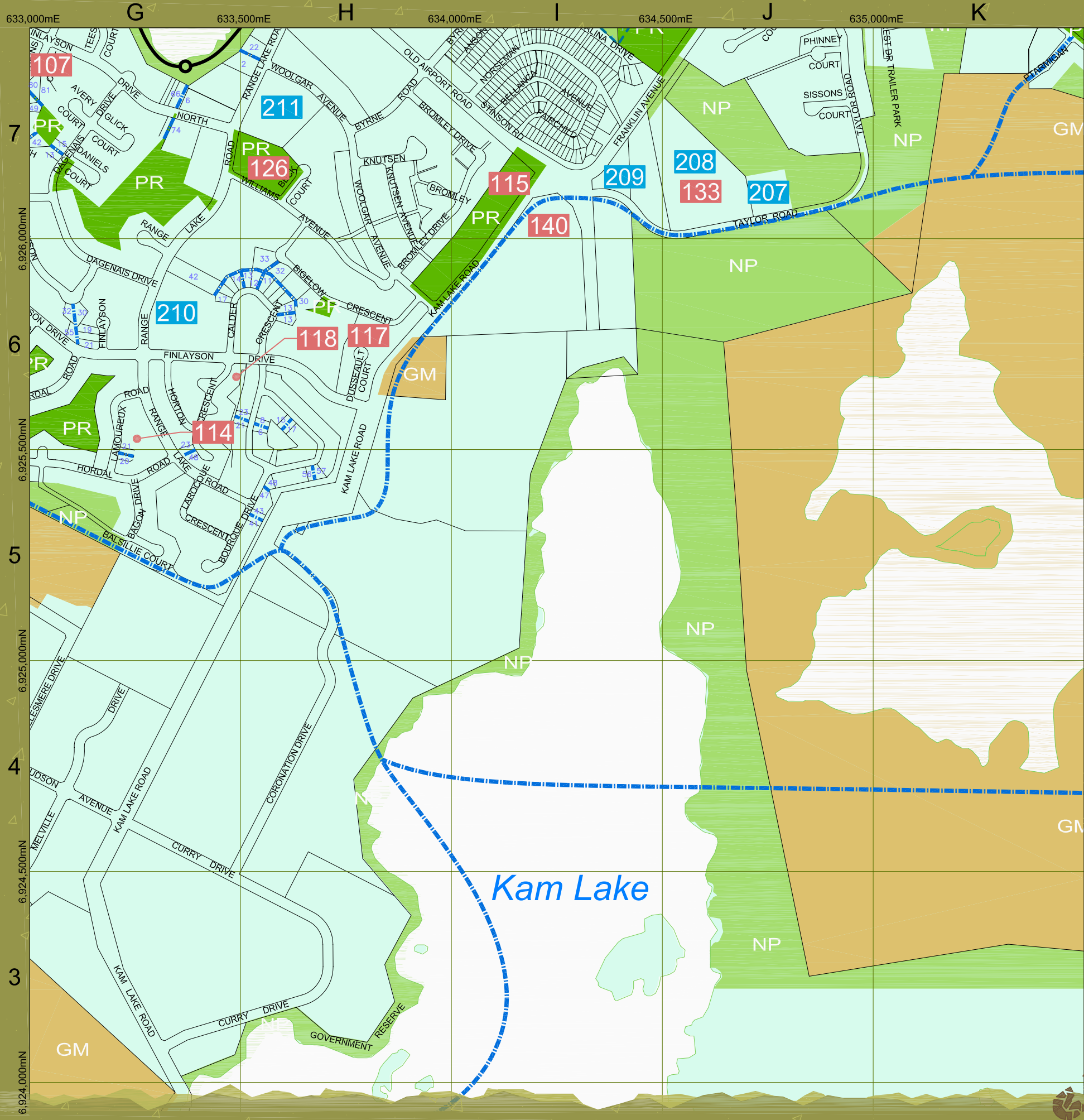
- | | |
|--|---|
| 100 Latham Island Park (N-13) | 123 Yellowknife Community Arena (J-8) |
| 101 Bush Pilots Memorial Park (N-12) | 124 Public Park (F-8, G-8) |
| 102 Jolliffe Island (O-12) | 125 Doombos Park (L-10) |
| 103 Schoold Draw Rotary Park (M-10) | 126 St. Joseph's Playing Field (H-7) |
| 104 School Draw Park (M-9) | 127 Lakeview Cemetery (H-11, H-12) |
| 105 Public Park (M-9) | 128 Public Park (O-13) |
| 106 Olexin Park (L-8) | 129 Public Park (O-13) |
| 107 Forrest Drive Park (K-8, L-7) | 130 Fritz Thell Memorial Park (M-11) |
| 108 Public Park (L-8) | 131 Tommy Forrest Ball Park (K-8) |
| 109 Public Park (K-8) | 132 Yellowknife Ski Club (L-14) |
| 110 Public Park (K-9) | 133 Soccer and Ball Field at William McDonald Junior High (J-7) |
| 111 Samba'ke Park (K-9) | 134 Playing Field at Sir John Franklin High School (M-9) |
| 112 McNiven Beach (J-8) | 135 Playing Field at Mildred Hall Elementary School (K-9) |
| 113 Past Gerry Murphy Arena Site (K-9) | 136 Playing Field at Range Lake North School (G-9) |
| 114 Public Park (G-6) | 137 Jeske Park (G-9) |
| 115 Frame Lake South Tennis Courts (I-7) | 138 Yellowknife Golf Club (not shown) |
| 116 Bristol Memorial Park (G-12, H-12) | 139 Yellowknife Curling Club (J-8) |
| 117 Public Park (G-6) | 140 Yellowknife Multiplex (I-7) |
| 118 Public Park (G-6) | 141 Outdoor Ice Rink (K-10) |
| 119 Ruth Inch Memorial Pool (J-8) | |
| 120 Public Library (L-9) | |
| 121 Tennis Courts (J-8) | |
| 122 Parker Recreational Field (F-7) | |

Institutional Facilities

- | | |
|--|-----------------------------------|
| 200 Solid Waste Facility (K-14) | 212 Range Lake North School (G-9) |
| 201 Municipal Boat Launch (N-12) | 213 Lakeview Cemetery (H-11) |
| 202 St. Patrick High School (L-10, M-10) | 214 Hospital (H-8) |
| 203 Weledeh School (L-10, M-10) | 215 Mildred Hall School (K-9) |
| 204 St. John Franklin High School (M-9) | 216 City Hall (K-10) |
| 205 Aurora College (K-9) | 217 RCMP (K-10) |
| 206 JH Sissons School (K-8) | 218 DND (K-10) |
| 207 Allain St. Cyr School (J-7) | 219 Court House (L-10) |
| 208 William McDonald School (J-7) | 220 Visitor's Centre (K-10) |
| 209 Yellowknife Fire Department (I-7) | 221 Museum (K-10) |
| 210 NJ Macpherson School (G-8) | 222 Legislative Assembly (J-11) |
| 211 St. Joseph School (H-7) | |

This map is for DISCUSSION purposes only. Information provided is based on the best material at the time of production. Locations and features are approximate.

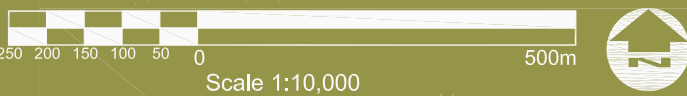




2005 Conditions

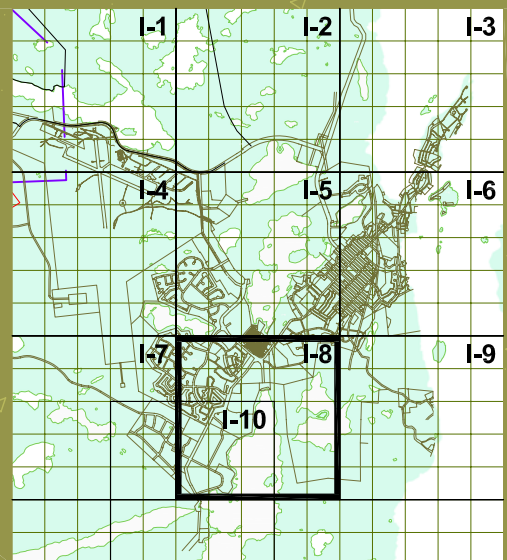


City of Yellowknife
**Integrated Parks, Trails and
 Open Space Development Study** **Map A I-8**
 September 2005



Legend:

- PR Parks and Recreational Areas
- NP Natural Preservation/Greenspace
- Walking Trails
- Ski Trails
- Dog Sled Derby Trail
- Snowmobile Route
- Snowmobile Off Limits
- GM Growth Management
- Capital Area
- Municipal Boundary
- Seismic Reserve



PR Public Parks and Recreation

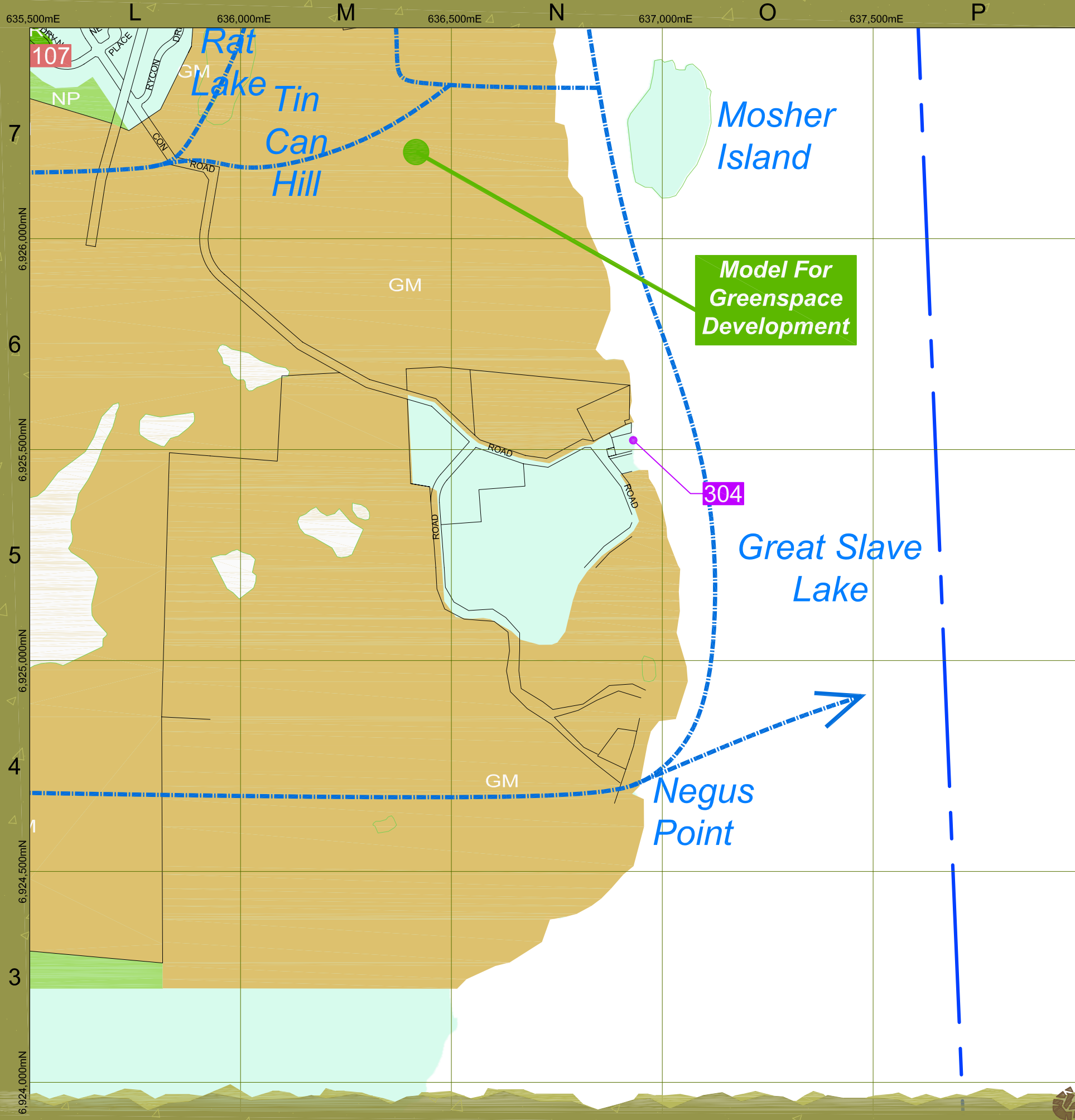
- | | |
|--|---|
| 100 Latham Island Park (N-13) | 123 Yellowknife Community Arena (J-8) |
| 101 Bush Pilots Memorial Park (N-12) | 124 Public Park (F-8, G-8) |
| 102 Jolliffe Island (O-12) | 125 Doombos Park (L-10) |
| 103 Schoold Draw Rotary Park (M-10) | 126 St. Joseph's Playing Field (H-7) |
| 104 School Draw Park (M-9) | 127 Lakeview Cemetery (H-11, H-12) |
| 105 Public Park (M-9) | 128 Public Park (O-13) |
| 106 Olexin Park (L-8) | 129 Public Park (O-13) |
| 107 Forrest Drive Park (K-8, L-7) | 130 Fritz Thell Memorial Park (M-11) |
| 108 Public Park (L-8) | 131 Tommy Forrest Ball Park (K-8) |
| 109 Public Park (K-8) | 132 Yellowknife Ski Club (L-14) |
| 110 Public Park (K-9) | 133 Soccer and Ball Field at William McDonald Junior High (J-7) |
| 111 Samba'ke Park (K-9) | 134 Playing Field at Sir John Franklin High School (M-9) |
| 112 McNiven Beach (J-8) | 135 Playing Field at Mildred Hall Elementary School (K-9) |
| 113 Past Gerry Murphy Arena Site (K-9) | 136 Playing Field at Range Lake North School (G-9) |
| 114 Public Park (G-6) | 137 Jeske Park (G-9) |
| 115 Frame Lake South Tennis Courts (I-7) | 138 Yellowknife Golf Club (not shown) |
| 116 Bristol Memorial Park (G-12, H-12) | 139 Yellowknife Curling Club (J-8) |
| 117 Public Park (G-6) | 140 Yellowknife Multiplex (I-7) |
| 118 Public Park (G-6) | 141 Outdoor Ice Rink (K-10) |
| 119 Ruth Inch Memorial Pool (J-8) | |
| 120 Public Library (L-9) | |
| 121 Tennis Courts (J-8) | |
| 122 Parker Recreational Field (F-7) | |

Institutional Facilities

- | | |
|--|-----------------------------------|
| 200 Solid Waste Facility (K-14) | 212 Range Lake North School (G-9) |
| 201 Municipal Boat Launch (N-12) | 213 Lakeview Cemetery (H-11) |
| 202 St. Patrick High School (L-10, M-10) | 214 Hospital (H-8) |
| 203 Weledeh School (L-10, M-10) | 215 Mildred Hall School (K-9) |
| 204 St. John Franklin High School (M-9) | 216 City Hall (K-10) |
| 205 Aurora College (K-9) | 217 RCMP (K-10) |
| 206 JH Sissons School (K-8) | 218 DND (K-10) |
| 207 Allain St. Cyr School (J-7) | 219 Court House (L-10) |
| 208 William McDonald School (J-7) | 220 Visitor's Centre (K-10) |
| 209 Yellowknife Fire Department (I-7) | 221 Museum (K-10) |
| 210 NJ Macpherson School (G-8) | 222 Legislative Assembly (J-11) |
| 211 St. Joseph School (H-7) | |

This map is for DISCUSSION purposes only. Information provided is based on the best material at the time of production. Locations and features are approximate.

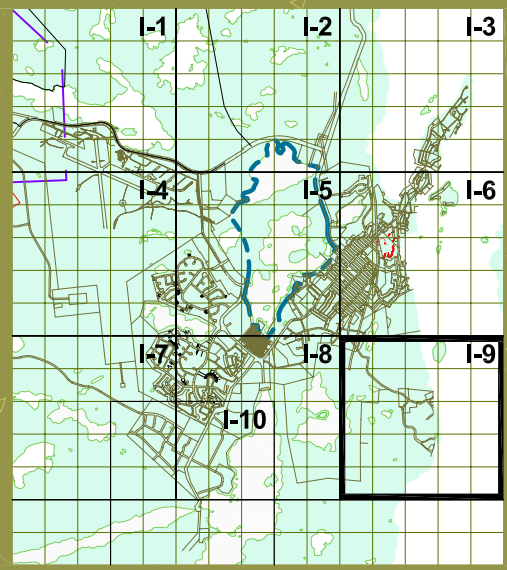
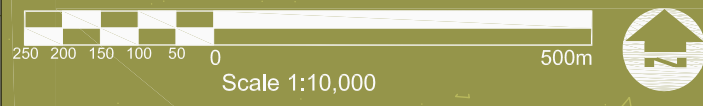




2005 Conditions



City of Yellowknife
 Integrated Parks, Trails and
 Open Space Development Study **Map A I-9**
 September 2005



Legend:

- PR Parks and Recreational Areas
- NP Natural Preservation/Greenspace
- Walking Trails
- Ski Trails
- Dog Sled Derby Trail
- Snowmobile Route
- Snowmobile Off Limits
- GM Growth Management
- Capital Area
- Municipal Boundary
- Seismic Reserve

PR Public Parks and Recreation

- | | |
|--|---|
| 100 Latham Island Park (N-13) | 123 Yellowknife Community Arena (J-8) |
| 101 Bush Pilots Memorial Park (N-12) | 124 Public Park (F-8, G-8) |
| 102 Jolliffe Island (O-12) | 125 Doombos Park (L-10) |
| 103 Schoold Draw Rotary Park (M-10) | 126 St. Joseph's Playing Field (H-7) |
| 104 School Draw Park (M-9) | 127 Lakeview Cemetery (H-11, H-12) |
| 105 Public Park (M-9) | 128 Public Park (O-13) |
| 106 Olexin Park (L-8) | 129 Public Park (O-13) |
| 107 Forrest Drive Park (K-8, L-7) | 130 Fritz Thell Memorial Park (M-11) |
| 108 Public Park (L-8) | 131 Tommy Forrest Ball Park (K-8) |
| 109 Public Park (K-8) | 132 Yellowknife Ski Club (L-14) |
| 110 Public Park (K-9) | 133 Soccer and Ball Field at William McDonald Junior High (J-7) |
| 111 Samba'ke Park (K-9) | 134 Playing Field at Sir John Franklin High School (M-9) |
| 112 McNiven Beach (J-8) | 135 Playing Field at Mildred Hall Elementary School (K-9) |
| 113 Past Gerry Murphy Arena Site (K-9) | 136 Playing Field at Range Lake North School (G-9) |
| 114 Public Park (G-6) | 137 Jeske Park (G-9) |
| 115 Frame Lake South Tennis Courts (I-7) | 138 Yellowknife Golf Club (not shown) |
| 116 Bristol Memorial Park (G-12, H-12) | 139 Yellowknife Curling Club (J-8) |
| 117 Public Park (G-6) | 140 Yellowknife Multiplex (I-7) |
| 118 Public Park (G-6) | 141 Outdoor Ice Rink (K-10) |
| 119 Ruth Inch Memorial Pool (J-8) | |
| 120 Public Library (L-9) | |
| 121 Tennis Courts (J-8) | |
| 122 Parker Recreational Field (F-7) | |

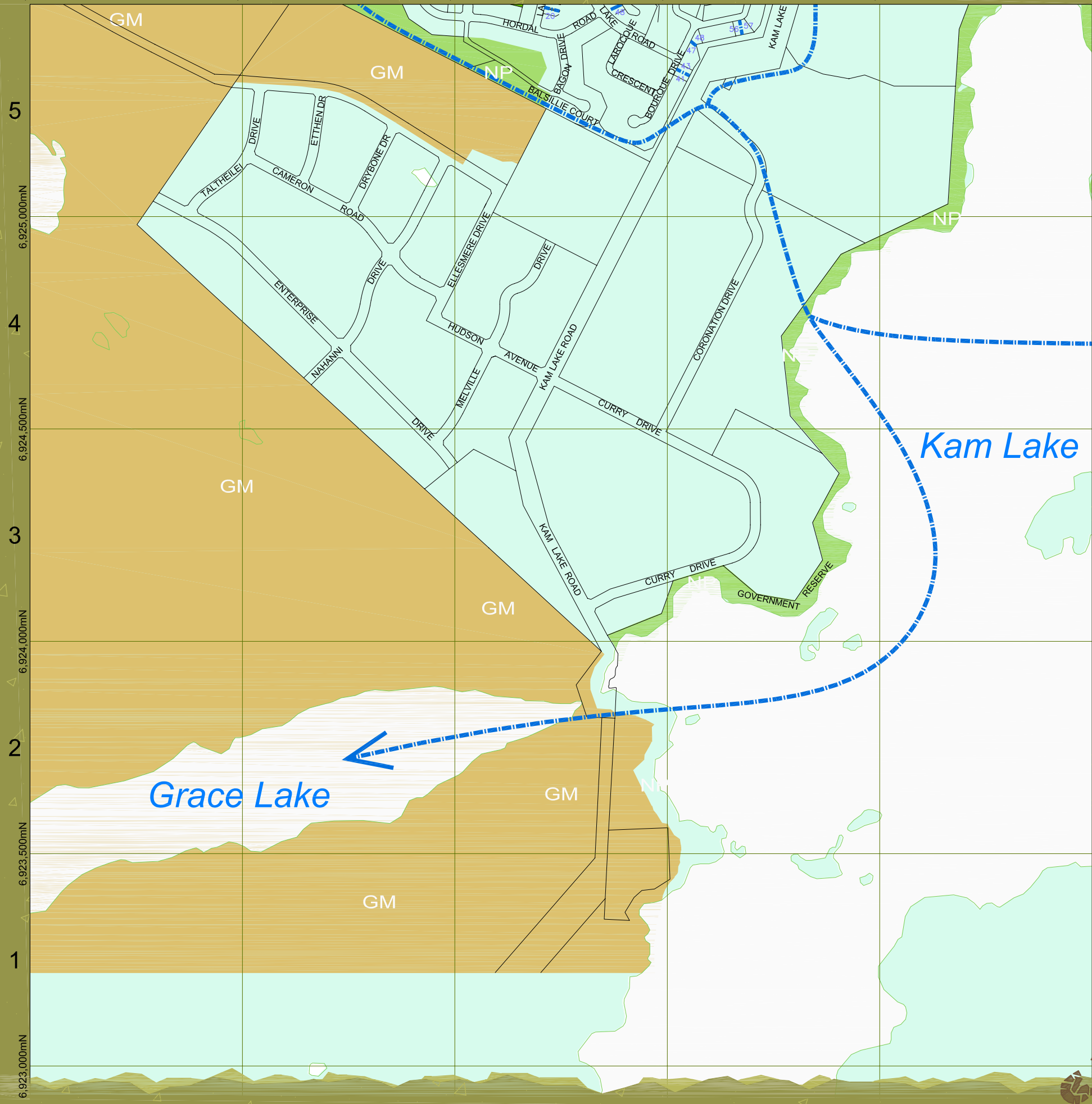
Institutional Facilities

- | | |
|--|-----------------------------------|
| 200 Solid Waste Facility (K-14) | 212 Range Lake North School (G-9) |
| 201 Municipal Boat Launch (N-12) | 213 Lakeview Cemetery (H-11) |
| 202 St. Patrick High School (L-10, M-10) | 214 Hospital (H-8) |
| 203 Weledah School (L-10, M-10) | 215 Mildred Hall School (K-9) |
| 204 Sir John Franklin High School (M-9) | 216 City Hall (K-10) |
| 205 Aurora College (K-9) | 217 RCMP (K-10) |
| 206 JH Sissons School (K-8) | 218 DND (K-10) |
| 207 Allain St. Cyr School (J-7) | 219 Court House (L-10) |
| 208 William McDonald School (J-7) | 220 Visitor's Centre (K-10) |
| 209 Yellowknife Fire Department (I-7) | 221 Museum (K-10) |
| 210 NJ Macpherson School (G-8) | 222 Legislative Assembly (J-11) |
| 211 St. Joseph School (H-7) | |

This map is for DISCUSSION purposes only. Information provided is based on the best material at the time of production. Locations and features are approximate.



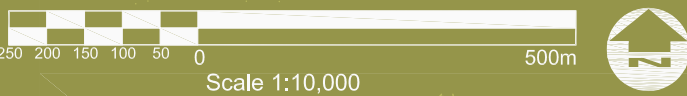
632,000mE 632,500mE 633,000mE 633,500mE 634,000mE



2005 Conditions

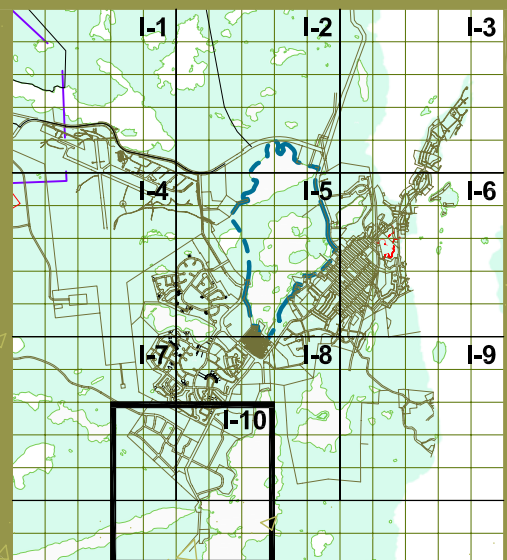


City of Yellowknife
 Integrated Parks, Trails and
 Open Space Development Study **Map A I-10**
 September 2005



Legend:

- PR Parks and Recreational Areas
- NP Natural Preservation/Greenspace
- Walking Trails
- Ski Trails
- Dog Sled Derby Trail
- Snowmobile Route
- Snowmobile Off Limits
- GM Growth Management
- Capital Area
- Municipal Boundary
- Seismic Reserve



PR Public Parks and Recreation

- | | |
|--|---|
| 100 Latham Island Park (N-13) | 123 Yellowknife Community Arena (J-8) |
| 101 Bush Pilots Memorial Park (N-12) | 124 Public Park (F-8, G-8) |
| 102 Jolliffe Island (O-12) | 125 Doombos Park (L-10) |
| 103 School Draw Rotary Park (M-10) | 126 St. Joseph's Playing Field (H-7) |
| 104 School Draw Park (M-9) | 127 Lakeview Cemetery (H-11, H-12) |
| 105 Public Park (M-9) | 128 Public Park (O-13) |
| 106 Olexin Park (L-8) | 129 Public Park (O-13) |
| 107 Forrest Drive Park (K-8, L-7) | 130 Fritz Thell Memorial Park (M-11) |
| 108 Public Park (L-8) | 131 Tommy Forrest Ball Park (K-8) |
| 109 Public Park (K-8) | 132 Yellowknife Ski Club (L-14) |
| 110 Public Park (K-9) | 133 Soccer and Ball Field at William McDonald Junior High (J-7) |
| 111 Samba'ke Park (K-9) | 134 Playing Field at Sir John Franklin High School (M-9) |
| 112 McNiven Beach (J-8) | 135 Playing Field at Mildred Hall Elementary School (K-9) |
| 113 Past Gerry Murphy Arena Site (K-9) | 136 Playing Field at Range Lake North School (G-9) |
| 114 Public Park (G-6) | 137 Jeske Park (G-9) |
| 115 Frame Lake South Tennis Courts (I-7) | 138 Yellowknife Golf Club (not shown) |
| 116 Bristol Memorial Park (G-12, H-12) | 139 Yellowknife Curling Club (J-8) |
| 117 Public Park (G-6) | 140 Yellowknife Multiplex (I-7) |
| 118 Public Park (G-6) | 141 Outdoor Ice Rink (K-10) |
| 119 Ruth Inch Memorial Pool (J-8) | |
| 120 Public Library (L-9) | |
| 121 Tennis Courts (J-8) | |
| 122 Parker Recreational Field (F-7) | |

Institutional Facilities

- | | |
|--|-----------------------------------|
| 200 Solid Waste Facility (K-14) | 212 Range Lake North School (G-9) |
| 201 Municipal Boat Launch (N-12) | 213 Lakeview Cemetery (H-11) |
| 202 St. Patrick High School (L-10, M-10) | 214 Hospital (H-8) |
| 203 Weledah School (L-10, M-10) | 215 Mildred Hall School (K-9) |
| 204 Sir John Franklin High School (M-9) | 216 City Hall (K-10) |
| 205 Aurora College (K-9) | 217 RCMP (K-10) |
| 206 JH Sissons School (K-8) | 218 DND (K-10) |
| 207 Allah St. Cyr School (J-7) | 219 Court House (L-10) |
| 208 William McDonald School (J-7) | 220 Visitor's Centre (K-10) |
| 209 Yellowknife Fire Department (I-7) | 221 Museum (K-10) |
| 210 NJ Macpherson School (G-8) | 222 Legislative Assembly (J-11) |
| 211 St. Joseph School (H-7) | |

This map is for DISCUSSION purposes only. Information provided is based on the best material at the time of production. Locations and features are approximate.

