



CITY OF YELLOWKNIFE

SCHOOL DRAW PARKING & GATEWAY NODE

CONSULTATION REPORT

Submitted to:
MSC/Council

By:
Department of Planning and Development
July 2017

Contents

1	Introduction, Background & Scope.....	1
2	Consultation Method.....	1
3	Survey and Consultation Feedback	3
3.1	Reaction to Node Theme & Layout A: Water	3
3.2	Reaction to Node Theme & Layout B: Working Town	4
3.3	Summary of Comments Related to Node Theme & Layout B: Working Town	4
3.4	Reaction to Node Theme & Layout C: Eclectic & Playful	4
3.5	General Comments.....	5
4	Conclusion	6

1 Introduction, Background & Scope

In its 2017 Capital Budget, Council approved \$265,000 for the paving and reorganization of the School Draw Parking Lot. Subsequently, Council directed Administration to start public consultation for the improvements to the School Draw Parking and Old Town Gateway Node.

The scope of this parking and public space capital project was determined by the direction provided by Council, and background research on current parking and operational requirements. This research included consultations with City staff and contractors regarding the space needed for ongoing trucked sewage service and smooth functioning of recycling areas, and a review of parking trends observed via aerial imagery between 2004 and 2016.

2 Consultation Method

The consultation method involved a blend of online and in-person consultations. The level of engagement on the International Association of Public Participation (IAP2) Spectrum of Participation was 'Consult'.

In-person consultations for the general public were held at City Hall Tuesday, June 13 and Thursday, June 15, 2017 and in the community of Ndilo on June 15. In addition, a "pop-up" style consultation was held on the site on Wednesday, June 14. In total, over 50 people attending in person consultations, with over 40 attending the "pop-up" event.

In-person consultations were conducted in the "open house" style and respondents were asked to engage via a "dot-mocracy" engagement technique, using red and green stickers to indicate their like or dislike for three different options for the Gateway Node portion of the site. Each option provided a potential layout of public amenities and landscaping along Franklin Avenue, as well as an overarching design theme which would apply to those amenities. Thus, it was possible to vote for the layout (green dot), and against the design idea (red dot), or vice versa.

In addition, at all events, two members of the Planning and Lands Division as well as the landscape architect engaged for this project were present to discuss options and provide information.

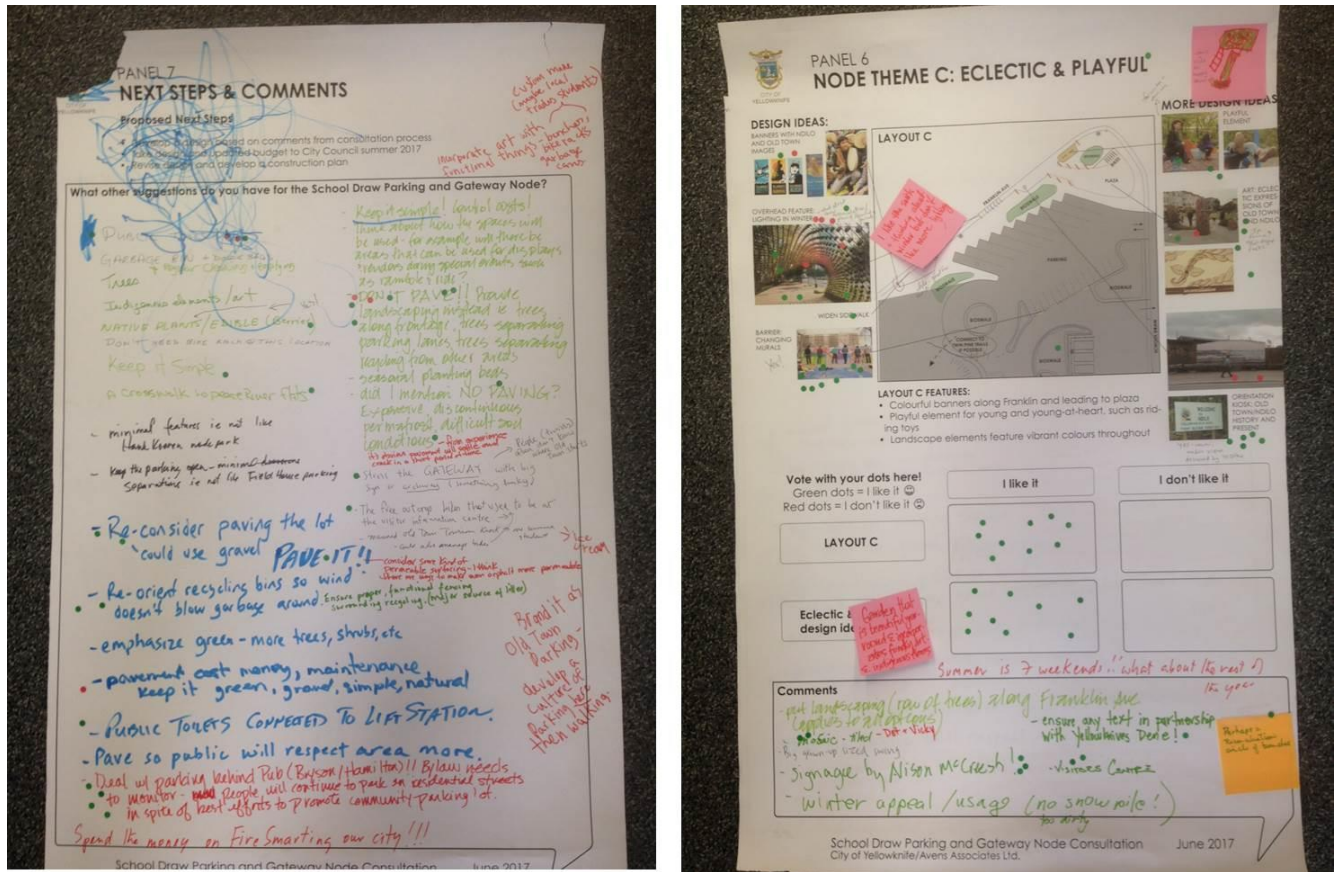


Figure 1. Consultation Panels

In addition to in-person engagement, the City’s PlaceSpeak forum was used for online consultation, and information was posted on the Planning and Development Initiatives webpage. In total, 101 completed the survey, and 6 comments were left on the discussion boards. The online survey was live from June 5 – June 19.

Social media was also used to promote the engagement. A sponsored Facebook post from June 19-25 reached 6,627 people, with 532 post engagements.

Because online survey and consultation panels had the same structure, results are reported together. It should be noted that although respondents could only complete the online survey once, individuals may have “voted” for preferred options or provided duplicate responses or comments by also attending in-person consultations. In addition, survey respondents are self-selected and therefore results may not be representative.

Finally, several respondents indicated being confused about provided feedback regarding the layout and theme of each option. This should be considered for future surveys.

3 Survey and Consultation Feedback

3.1 Reaction to Node Theme & Layout A: Water

Of the three options presented, both the layout and design theme in Node Option A was the second most popular. Overall, 45% of respondents stated they like the layout of amenities, and 64% of respondents stated they like the design theme.

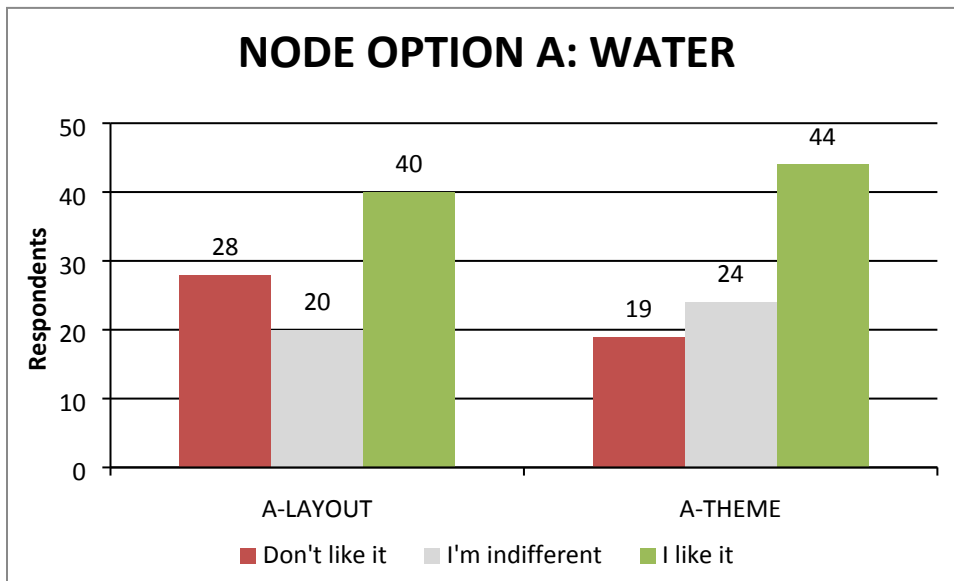


Figure 2. Node Theme A (34 non-responses)

The following comments summarize the feedback received related to the Node Theme & Layout A: Water.

Table 1. Summary of Comments - Node Theme & Layout A

Focus of Comment	Similar Comments
Colours (eg. blue) and water reflects Old Town	**
Doesn't fit	*
Fewer trees by intersection/not needed each stall	
Culturally neutral theme	
Include something about fishing/fish industry	

3.2 Reaction to Node Theme & Layout B: Working Town

The Working Town option, which draws on Old Town's industrial aesthetic, was the least popular of the layout and design theme options presented. Overall, 26% of respondents stated they like the layout of amenities, and 24% stated they like the design theme.

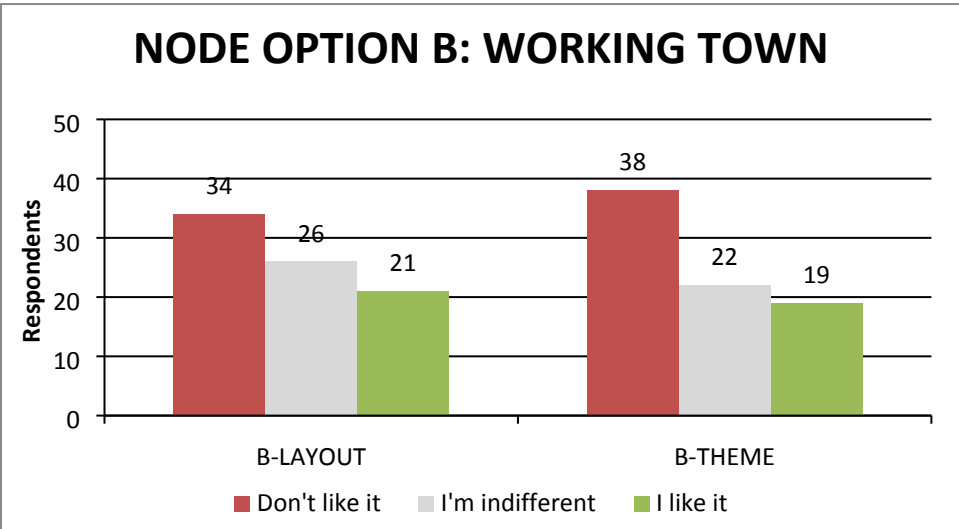


Figure 3. Node Theme B (42 non-responses)

3.3 Summary of Comments Related to Node Theme & Layout B: Working Town

The following comments summarize the feedback received related to the Node Theme & Layout B: Working Town.

Table 2. Summary of Comments - Node Theme & Layout B

Focus of Comment	Similar Comments
Fewer trees by intersection	
Under/above ground servicing info unique idea	
Simpler plaza is good	*
I like the industrial look - it fits with Old Town	**
Working Town theme too “cold”; not inviting	****

3.4 Reaction to Node Theme & Layout C: Eclectic & Playful

Both the layout and design theme for Node Option C were the most popular of the options surveyed. Overall, 52% of respondents stated that they like the layout of amenities for this option, and 55% of respondents stated that they like the design theme.

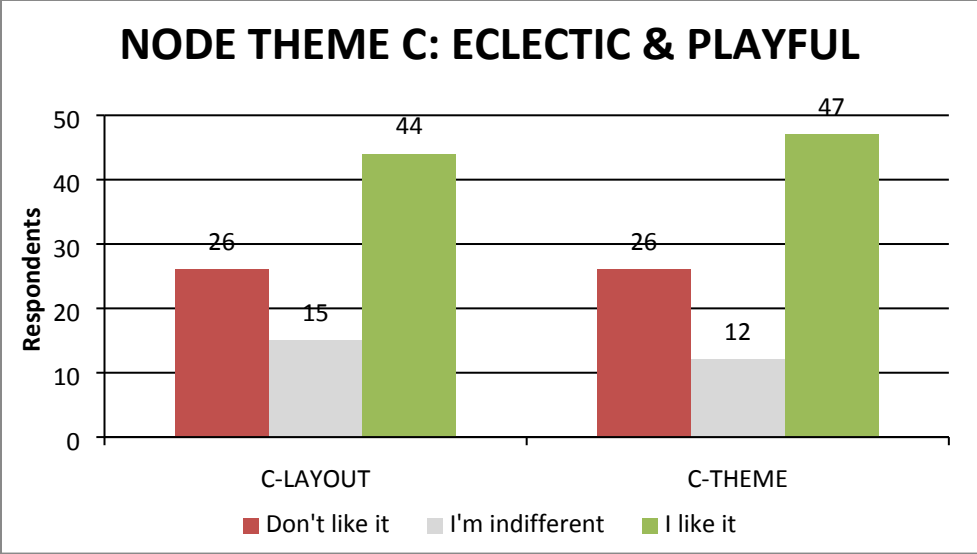


Figure 4. Node Theme C (36 non-responses)

Table 3. Summary of Comments - Node Theme & Layout C

Focus of Comment	Similar Comments
Merge water & playful themes	*
Concern about play equipment and road safety	*****
Very old town; love the playfulness, public spaces, mural, and colour	
Like the banners/overhead features	**
Works well with community garden; include educational display on local food	

3.5 General Comments

In addition to comments specific to each node option, many general comments were received regarding all aspects of the project, both within the scope of the consultation and outside of it.

Table 4 summarizes those comments.

Table 4. Summary of General Comments

Focus of Comment	Similar Comments
More parking (boat/trailer, regular vehicle)	*****
More green space	**
Expand community garden	****
Too much parking	*****
Keep it simple to build and maintain	*****
Think about use of space year round	*****
Public washroom needed	*****

Full accessibility important	
Eye-catching public art (think big)	*****
Lift station architecture featured more prominently	
Maintain open feel of site	*
Wifi hotspot	
Overhead lighting features to improve pedestrian experience	*
Overhead lighting could be tacky, and cause light pollution	**
Connection to Twin Pine Hill Trail important	*
Support inclusion of Ndilo history kiosk	*
Don't pave/permeable surfacing	*****
Pave	**
Consult with YKDFN on name for space / signage text	*
Reconciliation space / recognize victims of residential schools	**
Fountain/ice tower element	****
Vibrant colours and strong shapes for winter months	
Consider ways to buffer sewage smell	
Extend design elements across Franklin and to Rotary Park	
Lot could be a tiny home neighbourhood	*
Tourism cabin / Visitor's centre	*
No long-term trailer parking	
Economic development (business incubation; vendors)	****
Free bike share	*

4 Conclusion

Synthesizing the written comments received, oral comments made in-person, and the survey findings is critical step. This interpretive process is critical to drawing actionable information from data.

Given the relative popularity of both the Water and Playful aesthetics, as shown in Figure 2 and 4, these two concepts may be constructively blended to reflect the diverse reflections of Old Town, and provide numerous options for landscape features. The proposed Parking and Gateway Node is shown in Figure 5.

In addition to general survey comments, consultations in Ndilo indicated that this location is important not only as a gateway to Old Town, but also to the community of Ndilo. As such, it will be important to ensure that this is reflected in the interpretive signage and design features incorporated.

The following conclusions can be drawn from the consultation process:

- Keep it simple. Developing a public space which facilitates ease of use and maintenance is important. This includes improving access for sewage contractors, keeping the recycling area tidy, ensuring that the proper use of parking area is logical and understandable, and that landscaping and public amenities installed are robust.
- A division exists between those who believe more boat trailer parking is needed for the summer, and those who believe that thinking about year-round use of the space is critical. The overall layout responds to this by including improvements to the pedestrian realm, and 10 clearly delineated combined truck & trailer spaces which may be flexibly used during shoulder and winter seasons.
- It should be noted that paving the entire portion of the site outside of the operational areas (sewage and recycling) would decrease effective parking capacity without clear delineation. The defined turn-around area and wide truck and trailer spaces will ensure that the effective capacity reflects the designed capacity.
- Although not included in the scope of the consultation, over 20 written comments from the online survey were about the need for a public washroom.
- Several participants believe this area should not be paved and should be kept “natural”, while others believe paving will help keep it tidy. All concepts in the consultation focus on using natural run-off water to support generous areas featuring local plant species in bioswales. These areas delineate the different uses, and maintain the “natural” feel.
- There is an appetite for a signature piece of public art, yet concern persists about lighting or features which may be “tacky” or out of place. Careful consideration of any signature features along Franklin will be required.

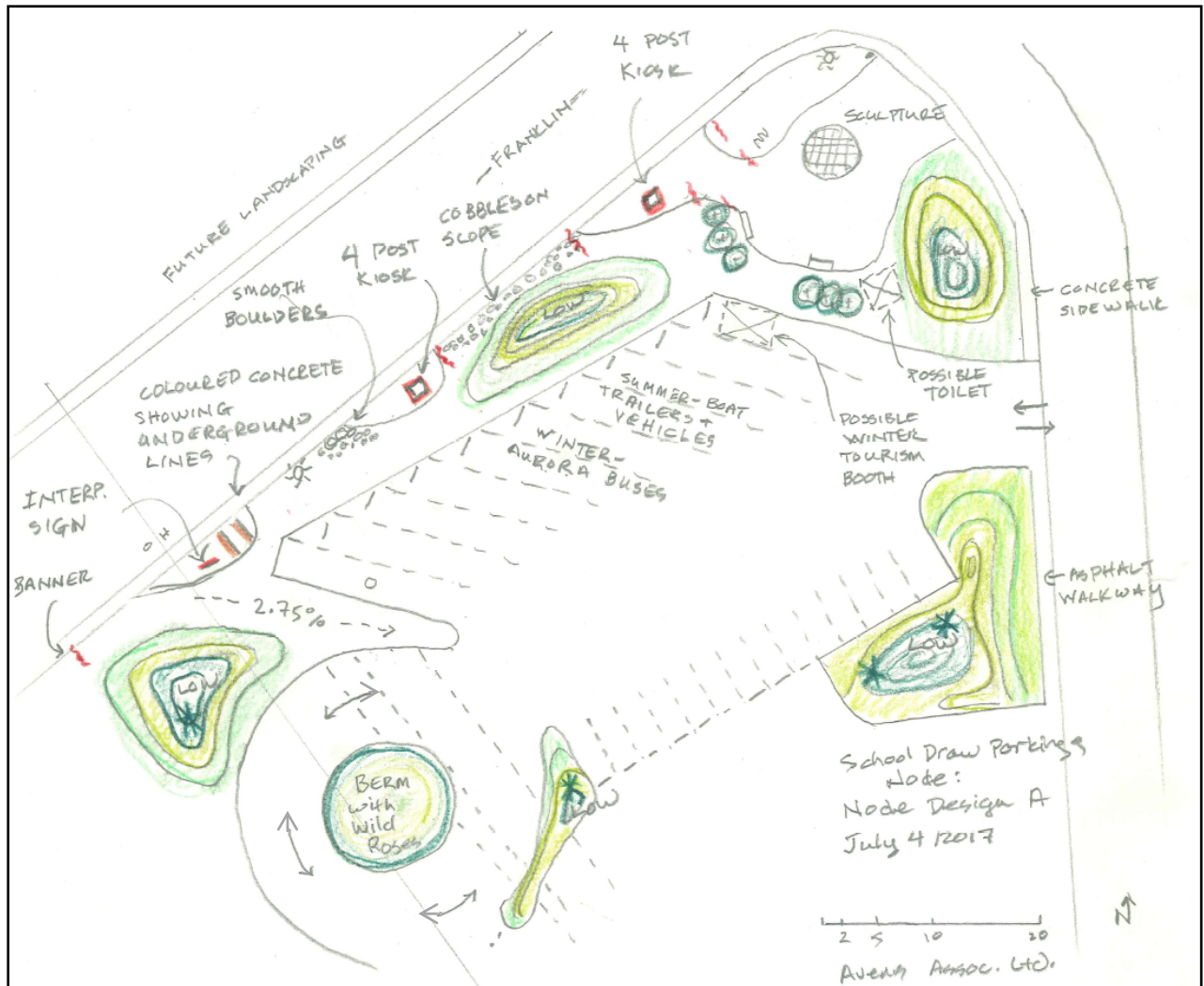


Figure 5. Parking Lot Node and Gateway Design