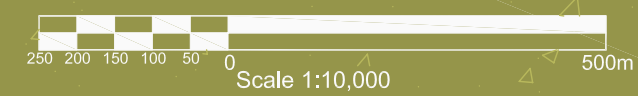




Non Vehicular Commuter Map

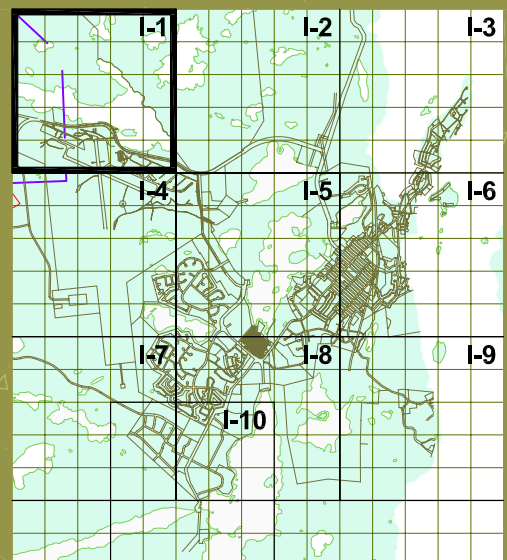


City of Yellowknife
 Integrated Parks, Trails and
 Open Space Development Study **Map D I-1**
 September 2005



Legend:

- PR Parks and Recreational Areas
- NP Natural Preservation/Greenspace
- Walking Trails
- Ski Trails
- GM Growth Management
- Capital Area
- Municipal Boundary
- Seismic Reserve
- Proposed Trail System
- Proposed Trail System (subject to change upon review)
- Pedestrian Crossing



PR Public Parks and Recreation

- 100 Latham Island Park (N-13)
- 101 Bush Pilots Memorial Park (N-12)
- 102 Jolliffe Island (O-12)
- 103 Schoold Draw Rotary Park (M-10)
- 104 School Draw Park (M-9)
- 105 Public Park (M-9)
- 106 Olexin Park (L-8)
- 107 Forrest Drive Park (K-8,L-7)
- 108 Public Park (L-8)
- 109 Public Park (K-8)
- 110 Public Park (K-9)
- 111 Samba'ke Park (K-9)
- 112 McNiven Beach (J-8)
- 113 Past Gerry Murphy Arena Site (K-9)
- 114 Public Park (G-6)
- 115 Frame Lake South Tennis Courts (I-7)
- 116 Bristol Memorial Park (G-12, H-12)
- 117 Public Park (G-6)
- 118 Public Park (G-6)
- 119 Ruth Inch Memorial Pool (J-8)
- 120 Public Library (L-9)
- 121 Tennis Courts (J-8)
- 122 Parker Recreational Field (F-7)

- 123 Yellowknife Community Arena (J-8)
- 124 Public Park (F-8, G-8)
- 125 Doombos Park(L-10)
- 126 St. Joseph's Playing Field (H-7)
- 127 Lakeview Cemetery (H-11, H-12)
- 128 Public Park (O-13)
- 129 Public Park (O-13)
- 130 Fritz Thell Memorial Park (M-11)
- 131 Tommy Forrest Ball Park (K-8)
- 132 Yellowknife Ski Club (L-14)
- 133 Soccer and Ball Field at William McDonald Junior High (J-7)
- 134 Playing Field at Sir John Franklin High School (M-9)
- 135 Playing Field at Mildred Hall Elementary School (K-9)
- 136 Playing Field at Range Lake North School (G-9)
- 137 Jeske Park (G-9)
- 138 Yellowknife Golf Club (not shown)
- 139 Yellowknife Curling Club (J-8)
- 140 Yellowknife Multiplex (I-7)
- 141 Outdoor Ice Rink (K-10)

Institutional Facilities

- 200 Solid Waste Facility (K-14)
- 201 Municipal Boat Launch (N-12)
- 202 St. Patrick High School (L-10, M-10)
- 203 Weledeh School (L-10, M-10)
- 204 Sir John Franklin High School (M-9)
- 205 Aurora College (K-9)
- 206 JH Sissons School (K-8)
- 207 Allan St. Cyr School (J-7)
- 208 William McDonald School (J-7)
- 209 Yellowknife Fire Department (I-7)
- 210 NJ Macpherson School (G-6)
- 211 St. Joseph School (H-7)
- 212 Range Lake North School (G-9)
- 213 Lakeview Cemetery (H-11)
- 214 Hospital (H-8)
- 215 Mildred Hall School (K-9)
- 216 City Hall (K-10)
- 217 RCMP (K-10)
- 218 DND (K-10)
- 219 Court House (L-10)
- 220 Visitor's Centre (K-10)
- 221 Museum (K-10)
- 222 Legeslativ Assembly (J-11)

Waterfront

- 300 Giant Mine Waterfront (M-17)
- 301 Waterfront Trail System
- 302 Waterfront Park (M-15)
- 303 Waterfront Viewpoint
- 304 Jackfish Ravine (L-13)
- 305 Back Bay Cemetery (L-13)
- 306 Waterfront Park (N-13)
- 307 Two Point Mooring Area (N-14)
- 308 Waterfront Park (O-13)
- 309 Community Docks (O-13)
- 310 Waterfront Park/Viewpoint (O-13)
- 311 Viewpoint (N-12)
- 312 Viewpoint (N-12)
- 313 Franklin Aves Walkway (N-12)
- 314 Day Use/Picnic Area (O-12)
- 315 Waterfront Park/Viewpoint (O-12)
- 316 Jolliffe Island Park (O-11)
- 317 Floating Home Mooring (N-11, N10)
- 318 Viewpoint (N-11)
- 319 Woodyard Heritage Waterfront Park (N-11)
- 320 Dettah Ice Road Access (M-10)
- 321 Viewpoint (N-10)
- 322 Community Docks (N-9)
- 323 Viewpoint (N-8)
- 324 Waterfront Trail System
- 325 Waterfront Park/Day Use (O-7)
- 326 Milsam Boat Launch (N-7)
- 327 Fuel Barge Docking Facility (N-6)

This map is for DISCUSSION purposes only. Information provided is based on the best material at the time of production. Locations and features are approximate.

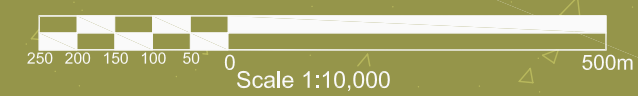




Non Vehicular Commuter Map

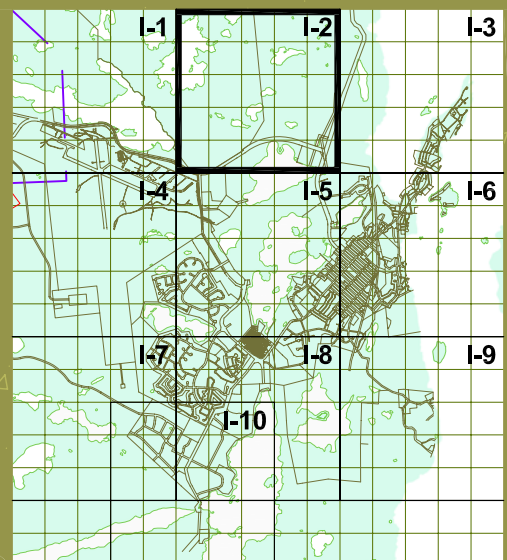


City of Yellowknife
 Integrated Parks, Trails and
 Open Space Development Study **Map D I-2**
 September 2005



Legend:

- PR Parks and Recreational Areas
- NP Natural Preservation/Greenspace
- Walking Trails
- Ski Trails
- GM Growth Management
- Capital Area
- Municipal Boundary
- Seismic Reserve
- Proposed Trail System
- Proposed Trail System (subject to change upon review)
- Pedestrian Crossing



PR Public Parks and Recreation

- 100 Latham Island Park (N-13)
- 101 Bush Pilots Memorial Park (N-12)
- 102 Jolliffe Island (O-12)
- 103 School Draw Rotary Park (M-10)
- 104 School Draw Park (M-9)
- 105 Public Park (M-9)
- 106 Olexin Park (L-8)
- 107 Forrest Drive Park (K-8, L-7)
- 108 Public Park (L-8)
- 109 Public Park (K-8)
- 110 Public Park (K-9)
- 111 Samba'ke Park (K-9)
- 112 McNiven Beach (J-8)
- 113 Past Gerry Murphy Arena Site (K-9)
- 114 Public Park (G-6)
- 115 Frame Lake South Tennis Courts (I-7)
- 116 Bristol Memorial Park (G-12, H-12)
- 117 Public Park (G-6)
- 118 Public Park (G-6)
- 119 Ruth Inch Memorial Pool (J-8)
- 120 Public Library (L-9)
- 121 Tennis Courts (J-8)
- 122 Parker Recreational Field (F-7)

- 123 Yellowknife Community Arena (J-8)
- 124 Public Park (F-8, G-8)
- 125 Doombos Park (L-10)
- 126 St. Joseph's Playing Field (H-7)
- 127 Lakeview Cemetery (H-11, H-12)
- 128 Public Park (O-13)
- 129 Public Park (O-13)
- 130 Fritz Thell Memorial Park (M-11)
- 131 Tommy Forrest Ball Park (K-8)
- 132 Yellowknife Ski Club (L-14)
- 133 Soccer and Ball Field at William McDonald Junior High (J-7)
- 134 Playing Field at Sir John Franklin High School (M-9)
- 135 Playing Field at Mildred Hall Elementary School (K-9)
- 136 Playing Field at Range Lake North School (G-9)
- 137 Jeske Park (G-9)
- 138 Yellowknife Golf Club (not shown)
- 139 Yellowknife Curling Club (J-8)
- 140 Yellowknife Multiplex (I-7)
- 141 Outdoor Ice Rink (K-10)

Institutional Facilities

- 200 Solid Waste Facility (K-14)
- 201 Municipal Boat Launch (N-12)
- 202 St. Patrick High School (L-10, M-10)
- 203 Weledah School (L-10, M-10)
- 204 Sir John Franklin High School (M-9)
- 205 Aurora College (K-8)
- 206 JH Sissons School (K-8)
- 207 Allan St. Cyr School (J-7)
- 208 William McDonald School (J-7)
- 209 Yellowknife Fire Department (I-7)
- 210 NJ Macpherson School (G-6)
- 211 St. Joseph School (H-7)
- 212 Range Lake North School (G-9)
- 213 Lakeview Cemetery (H-11)
- 214 Hospital (H-8)
- 215 Mildred Hall School (K-9)
- 216 City Hall (K-10)
- 217 RCMP (K-10)
- 218 DND (K-10)
- 219 Court House (L-10)
- 220 Visitor's Centre (K-10)
- 221 Museum (K-10)
- 222 Legeslative Assembly (J-11)

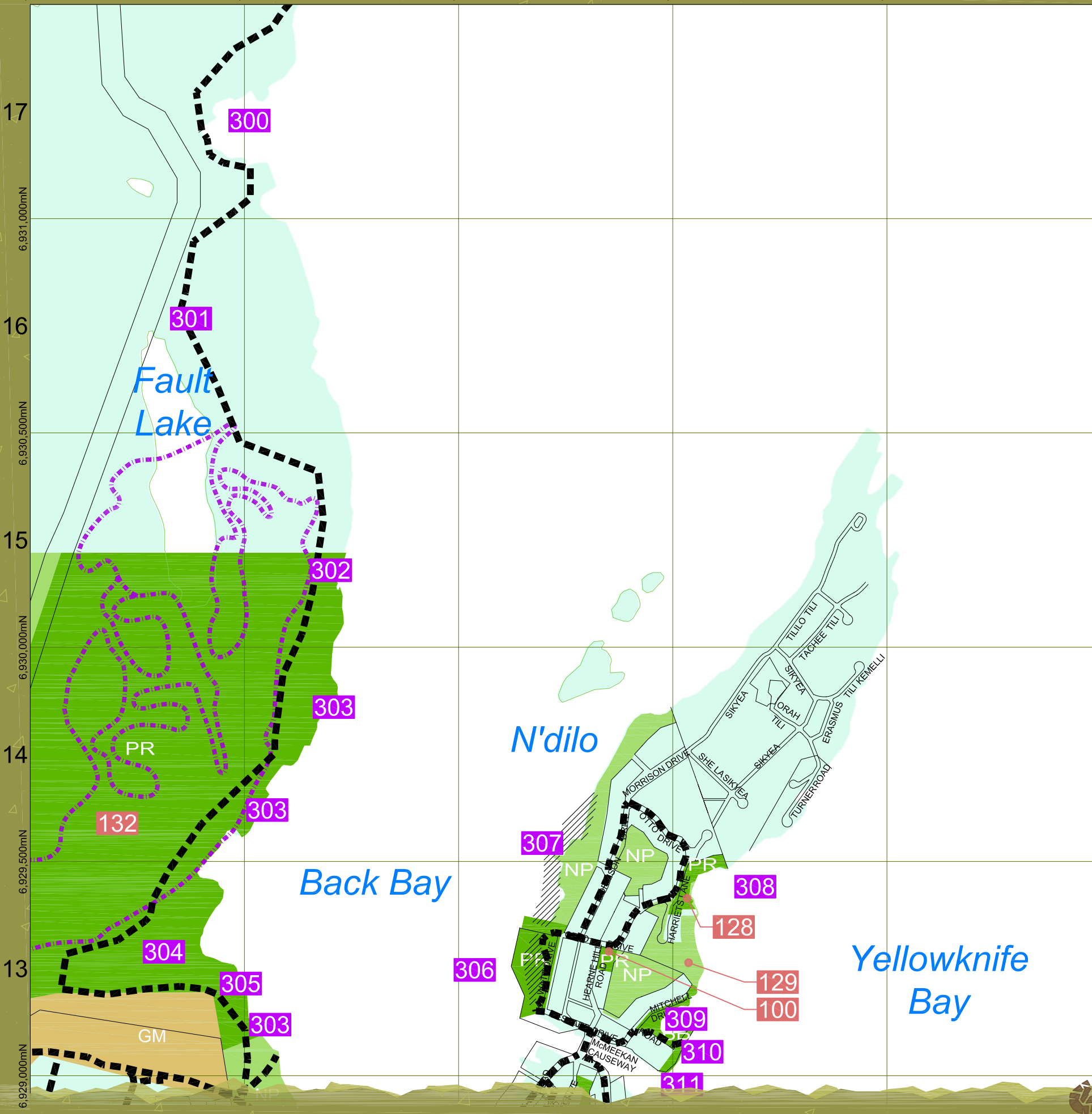
Waterfront

- 300 Giant Mine Waterfront (M-17)
- 301 Waterfront Trail System
- 302 Waterfront Park (M-15)
- 303 Waterfront Viewpoint
- 304 Jackfish Ravine (L-13)
- 305 Back Bay Cemetery (L-13)
- 306 Waterfront Park (N-13)
- 307 Two Point Mooring Area (N-14)
- 308 Waterfront Park (O-13)
- 309 Community Docks (O-13)
- 310 Waterfront Park/Viewpoint (O-13)
- 311 Viewpoint (N-12)
- 312 Viewpoint (N-12)
- 313 Franklin Aves Walkway (N-12)
- 314 Day Use/Picnic Area (O-12)
- 315 Waterfront Park/Viewpoint (O-12)
- 316 Jolliffe Island Park (O-11)
- 317 Floating Home Mooring (N-11, N10)
- 318 Viewpoint (N-11)
- 319 Woodyard Heritage Waterfront Park (N-11)
- 320 Dettan Ice Road Access (M-10)
- 321 Viewpoint (N-10)
- 322 Community Docks (N-9)
- 323 Viewpoint (N-8)
- 324 Waterfront Trail System
- 325 Waterfront Park/Day Use (O-7)
- 326 Miramar Boat Launch (N-7)
- 327 Fuel Barge Docking Facility (N-6)

This map is for DISCUSSION purposes only. Information provided is based on the best material at the time of production. Locations and features are approximate.

Leave Your Mark

635,500mE L 636,000mE M 636,500mE N 637,000mE O 637,500mE P



Non Vehicular Commuter Map

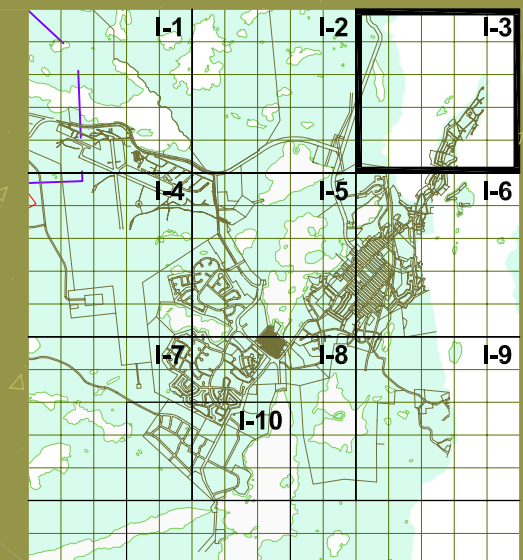


City of Yellowknife
 Integrated Parks, Trails and
 Open Space Development Study **Map D I-3**
 September 2005



Legend:

- PR Parks and Recreational Areas
- NP Natural Preservation/Greenspace
- Walking Trails
- Ski Trails
- GM Growth Management
- Capital Area
- Municipal Boundary
- Seismic Reserve
- Proposed Trail System
- Proposed Trail System (subject to change upon review)
- ▲ Pedestrian Crossing



PR Public Parks and Recreation	Institutional Facilities	Waterfront
100 Latham Island Park (N-13) 101 Bush Pilots Memorial Park (N-12) 102 Jolliffe Island (O-12) 103 School Draw Rotary Park (M-10) 104 School Draw Park (M-9) 105 Public Park (M-9) 106 Olexin Park (L-8) 107 Forrest Drive Park (K-8, L-7) 108 Public Park (L-8) 109 Public Park (K-8) 110 Public Park (K-9) 111 Samba'ke Park (K-9) 112 McNiven Beach (J-8) 113 Past Gerry Murphy Arena Site (K-9) 114 Public Park (G-6) 115 Frame Lake South Tennis Courts (I-7) 116 Bristol Memorial Park (G-12, H-12) 117 Public Park (G-6) 118 Public Park (G-6) 119 Ruth Inch Memorial Pool (J-8) 120 Public Library (L-9) 121 Tennis Courts (J-8) 122 Parker Recreational Field (F-7)	123 Yellowknife Community Arena (J-8) 124 Public Park (F-8, G-8) 125 Doombos Park (L-10) 126 St. Joseph's Playing Field (H-7) 127 Lakeview Cemetery (H-11, H-12) 128 Public Park (O-13) 129 Public Park (O-13) 130 Fritz Thell Memorial Park (M-11) 131 Tommy Forrest Ball Park (K-8) 132 Yellowknife Ski Club (L-14) 133 Soccer and Ball Field at William McDonald Junior High (J-7) 134 Playing Field at Sir John Franklin High School (M-9) 135 Playing Field at Mildred Hall Elementary School (K-9) 136 Playing Field at Range Lake North School (G-9) 137 Jeske Park (G-9) 138 Yellowknife Golf Club (not shown) 139 Yellowknife Curling Club (J-8) 140 Yellowknife Multiplex (I-7) 141 Outdoor Ice Rink (K-10)	200 Solid Waste Facility (K-14) 201 Municipal Boat Launch (N-12) 202 St. Patrick High School (L-10, M-10) 203 Weledeh School (L-10, M-10) 204 Sir John Franklin High School (M-9) 205 Aurora College (K-9) 206 JH Sissons School (K-8) 207 Allain St. Cyr School (J-7) 208 William McDonald School (J-7) 209 Yellowknife Fire Department (I-7) 210 NJ Macpherson School (G-6) 211 St. Joseph School (H-7) 212 Range Lake North School (G-9) 213 Lakeview Cemetery (H-11) 214 Hospital (H-8) 215 Mildred Hall School (K-9) 216 City Hall (K-10) 217 RCMP (K-10) 218 DND (K-10) 219 Court House (L-10) 220 Visitor's Centre (K-10) 221 Museum (K-10) 222 Legislative Assembly (J-11)
300 Giant Mine Waterfront (M-17) 301 Waterfront Trail System 302 Waterfront Park (M-15) 303 Waterfront Viewpoint 304 Jackfish Ravine (L-13) 305 Back Bay Cemetery (L-13) 306 Waterfront Park (N-13) 307 Two Point Mooring Area (N-14) 308 Waterfront Park (O-13) 309 Community Docks (O-13) 310 Waterfront Park/Viewpoint (O-13) 311 Viewpoint (N-12) 312 Viewpoint (N-12) 313 Franklin Aves Walkway (N-12) 314 Day Use/Picnic Area (O-12) 315 Waterfront Park/Viewpoint (O-12) 316 Jolliffe Island Park (O-11) 317 Floating Home Mooring (N-11, N10) 318 Viewpoint (N-11) 319 Woodyard Heritage Waterfront Park (N-11) 320 Detain Ice Road Access (M-10) 321 Viewpoint (N-10) 322 Community Docks (N-9) 323 Viewpoint (N-8) 324 Waterfront Trail System 325 Waterfront Park/Day Use (O-7) 326 Milsamer Boat Launch (N-7) 327 Fuel Barge Docking Facility (N-6)		

This map is for DISCUSSION purposes only. Information provided is based on the best material at the time of production. Locations and features are approximate.

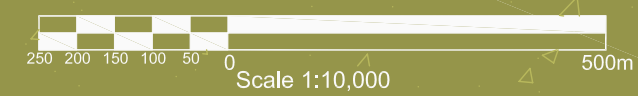




Non Vehicular Commuter Map

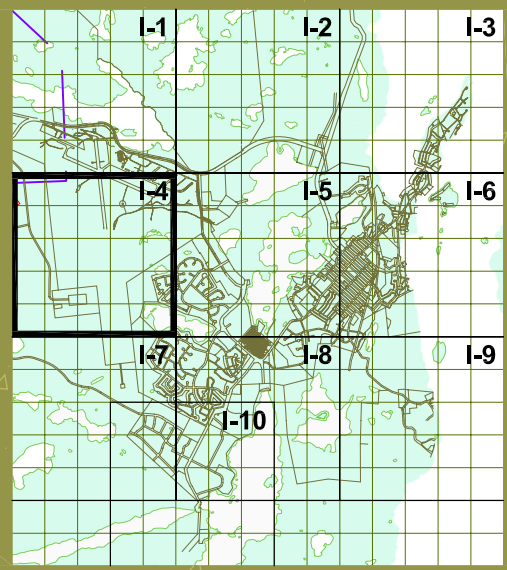


City of Yellowknife
 Integrated Parks, Trails and
 Open Space Development Study **Map D I-4**
 September 2005



Legend:

- PR Parks and Recreational Areas
- NP Natural Preservation/Greenspace
- Walking Trails
- Ski Trails
- GM Growth Management
- Capital Area
- Municipal Boundary
- Seismic Reserve
- Proposed Trail System
- Proposed Trail System (subject to change upon review)
- Pedestrian Crossing



PR Public Parks and Recreation

- 100 Latham Island Park (N-13)
- 101 Bush Pilots Memorial Park (N-12)
- 102 Jolliffe Island (O-12)
- 103 School Draw Rotary Park (M-10)
- 104 School Draw Park (M-9)
- 105 Public Park (M-9)
- 106 Olexin Park (L-8)
- 107 Forrest Drive Park (K-8, L-7)
- 108 Public Park (L-8)
- 109 Public Park (K-8)
- 110 Public Park (K-9)
- 111 Samba'ke Park (K-9)
- 112 McNiven Beach (J-8)
- 113 Past Gerry Murphy Arena Site (K-9)
- 114 Public Park (G-6)
- 115 Frame Lake South Tennis Courts (I-7)
- 116 Bristol Memorial Park (G-12, H-12)
- 117 Public Park (G-6)
- 118 Public Park (G-6)
- 119 Ruth Inch Memorial Pool (J-8)
- 120 Public Library (L-9)
- 121 Tennis Courts (J-8)
- 122 Parker Recreational Field (F-7)

- 123 Yellowknife Community Arena (J-8)
- 124 Public Park (F-8, G-8)
- 125 Doombos Park (L-10)
- 126 St. Joseph's Playing Field (H-7)
- 127 Lakeview Cemetery (H-11, H-12)
- 128 Public Park (O-13)
- 129 Public Park (O-13)
- 130 Fritz Theil Memorial Park (M-11)
- 131 Tommy Forrest Ball Park (K-8)
- 132 Yellowknife Ski Club (L-14)
- 133 Soccer and Ball Field at William McDonald Junior High (J-7)
- 134 Playing Field at Sir John Franklin High School (M-9)
- 135 Playing Field at Mildred Hall Elementary School (K-9)
- 136 Playing Field at Range Lake North School (G-9)
- 137 Jeske Park (G-9)
- 138 Yellowknife Golf Club (not shown)
- 139 Yellowknife Curling Club (J-8)
- 140 Yellowknife Multiplex (I-7)
- 141 Outdoor Ice Rink (K-10)

Institutional Facilities

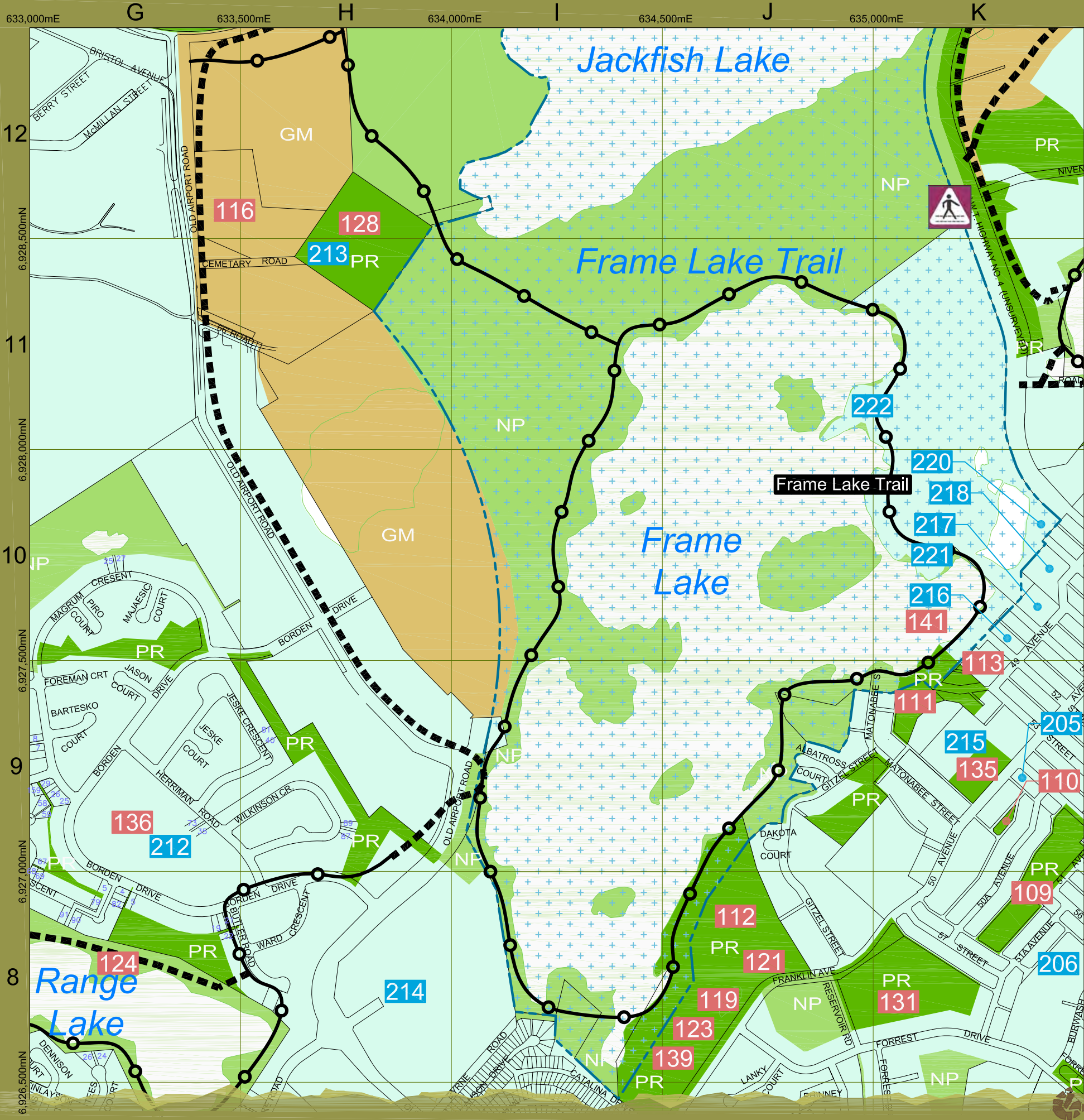
- 200 Solid Waste Facility (K-14)
- 201 Municipal Boat Launch (N-12)
- 202 St. Patrick High School (L-10, M-10)
- 203 Weleden School (L-10, M-10)
- 204 Sir John Franklin High School (M-9)
- 205 Aurora College (K-9)
- 206 JH Sissons School (K-8)
- 207 Allain St. Cyr School (J-7)
- 208 William McDonald School (J-7)
- 209 Yellowknife Fire Department (I-7)
- 210 NJ Macpherson School (G-6)
- 211 St. Joseph School (H-7)
- 212 Range Lake North School (G-9)
- 213 Lakeview Cemetery (H-11)
- 214 Hospital (H-8)
- 215 Mildred Hall School (K-9)
- 216 City Hall (K-10)
- 217 RCMP (K-10)
- 218 DND (K-10)
- 219 Court House (L-10)
- 220 Visitor's Centre (K-10)
- 221 Museum (K-10)
- 222 Legeslative Assembly (J-11)

Waterfront

- 300 Giant Mine Waterfront (M-17)
- 301 Waterfront Trail System
- 302 Waterfront Park (M-15)
- 303 Waterfront Viewpoint
- 304 Jackfish Ravine (L-13)
- 305 Back Bay Cemetery (L-13)
- 306 Waterfront Park (N-13)
- 307 Two Point Mooring Area (N-14)
- 308 Waterfront Park (O-13)
- 309 Community Docks (O-13)
- 310 Waterfront Park/Viewpoint (O-13)
- 311 Viewpoint (N-12)
- 312 Viewpoint (N-12)
- 313 Franklin Aves Walkway (N-12)
- 314 Day Use/Picnic Area (O-12)
- 315 Waterfront Park/Viewpoint (O-12)
- 316 Jolliffe Island Park (O-11)
- 317 Floating Home Mooring (N-11, N10)
- 318 Viewpoint (N-11)
- 319 Woodyard Heritage Waterfront Park (N-11)
- 320 Dettain Ice Road Access (M-10)
- 321 Viewpoint (N-10)
- 322 Community Docks (N-9)
- 323 Viewpoint (N-8)
- 324 Waterfront Trail System
- 325 Waterfront Park/Day Use (O-7)
- 326 Milnamer Boat Launch (N-7)
- 327 Fuel Barge Docking Facility (N-6)

This map is for DISCUSSION purposes only. Information provided is based on the best material at the time of production. Locations and features are approximate.





Non Vehicular Commuter Map

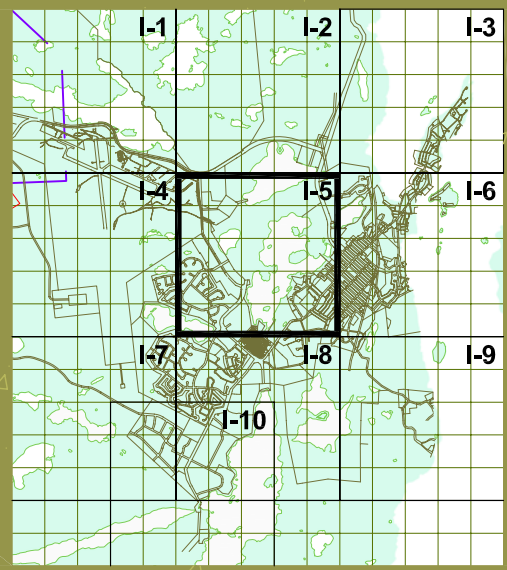


City of Yellowknife
 Integrated Parks, Trails and
 Open Space Development Study
 Map D I-5
 September 2005



Legend:

- PR Parks and Recreational Areas
- NP Natural Preservation/Greenspace
- Walking Trails
- Ski Trails
- GM Growth Management
- Capital Area
- Municipal Boundary
- Seismic Reserve
- Proposed Trail System
- Proposed Trail System (subject to change upon review)
- Pedestrian Crossing



PR Public Parks and Recreation

- 100 Latham Island Park (N-13)
- 101 Bush Pilots Memorial Park (N-12)
- 102 Jolliffe Island (O-12)
- 103 School Draw Rotary Park (M-10)
- 104 School Draw Park (M-9)
- 105 Public Park (M-9)
- 106 Olexin Park (L-8)
- 107 Forrest Drive Park (K-8, L-7)
- 108 Public Park (L-8)
- 109 Public Park (K-8)
- 110 Public Park (K-9)
- 111 Samba'ke Park (K-9)
- 112 McNiven Beach (J-8)
- 113 Past Gerry Murphy Arena Site (K-9)
- 114 Public Park (G-6)
- 115 Frame Lake South Tennis Courts (I-7)
- 116 Bristol Memorial Park (G-12, H-12)
- 117 Public Park (G-6)
- 118 Public Park (G-6)
- 119 Ruth Inch Memorial Pool (J-8)
- 120 Public Library (L-9)
- 121 Tennis Courts (J-8)
- 122 Parker Recreational Field (F-7)

- 123 Yellowknife Community Arena (J-8)
- 124 Public Park (F-8, G-8)
- 125 Doombos Park (L-10)
- 126 St. Joseph's Playing Field (H-7)
- 127 Lakeview Cemetery (H-11, H-12)
- 128 Public Park (O-13)
- 129 Public Park (O-13)
- 130 Fritz Thell Memorial Park (M-11)
- 131 Tommy Forrest Ball Park (K-8)
- 132 Yellowknife Ski Club (L-14)
- 133 Soccer and Ball Field at William McDonald Junior High (J-7)
- 134 Playing Field at Sir John Franklin High School (M-9)
- 135 Playing Field at Mildred Hall Elementary School (K-9)
- 136 Playing Field at Range Lake North School (G-9)
- 137 Jeske Park (G-9)
- 138 Yellowknife Golf Club (not shown)
- 139 Yellowknife Curling Club (J-8)
- 140 Yellowknife Multiplex (I-7)
- 141 Outdoor Ice Rink (K-10)

Institutional Facilities

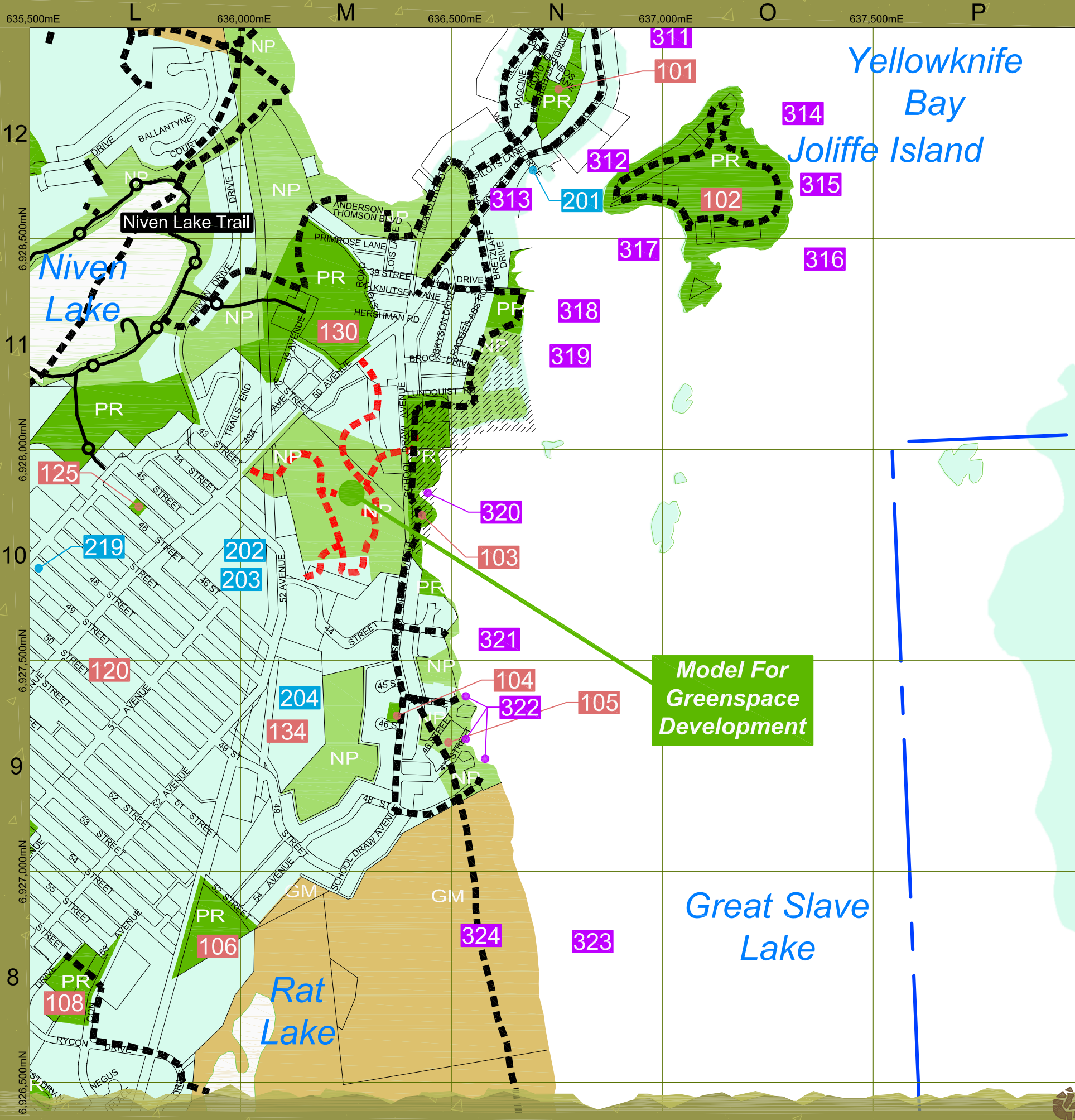
- 200 Solid Waste Facility (K-14)
- 201 Municipal Boat Launch (N-12)
- 202 St. Patrick High School (L-10, M-10)
- 203 Weleden School (L-10, M-10)
- 204 Sir John Franklin High School (M-9)
- 205 Aurora College (K-9)
- 206 JH Sissons School (K-8)
- 207 Allain St. Cyr School (J-7)
- 208 William McDonald School (J-7)
- 209 Yellowknife Fire Department (I-7)
- 210 NJ Macpherson School (G-6)
- 211 St. Joseph School (H-7)
- 212 Range Lake North School (G-9)
- 213 Lakeview Cemetery (H-11)
- 214 Hospital (H-8)
- 215 Mildred Hall School (K-9)
- 216 City Hall (K-10)
- 217 RCMP (K-10)
- 218 DND (K-10)
- 219 Court House (L-10)
- 220 Visitor's Centre (K-10)
- 221 Museum (K-10)
- 222 Legislative Assembly (J-11)

Waterfront

- 300 Giant Mine Waterfront (M-17)
- 301 Waterfront Trail System
- 302 Waterfront Park (M-15)
- 303 Waterfront Viewpoint
- 304 Jackfish Ravine (L-13)
- 305 Back Bay Cemetery (L-13)
- 306 Waterfront Park (N-13)
- 307 Two Point Mooring Area (N-14)
- 308 Waterfront Park (O-13)
- 309 Community Docks (O-13)
- 310 Waterfront Park/Viewpoint (O-13)
- 311 Viewpoint (N-12)
- 312 Viewpoint (N-12)
- 313 Franklin Ave Walkway (N-12)
- 314 Day Use/Picnic Area (O-12)
- 315 Waterfront Park/Viewpoint (O-12)
- 316 Jolliffe Island Park (O-11)
- 317 Floating Home Mooring (N-11, N10)
- 318 Viewpoint (N-11)
- 319 Woodyard Heritage Waterfront Park (N-11)
- 320 Dettain Ice Road Access (M-10)
- 321 Viewpoint (N-10)
- 322 Community Docks (N-9)
- 323 Viewpoint (N-8)
- 324 Waterfront Trail System
- 325 Waterfront Park/Day Use (O-7)
- 326 Mitered Boat Launch (N-7)
- 327 Fuel Barge Docking Facility (N-6)

This map is for DISCUSSION purposes only. Information provided is based on the best material at the time of production. Locations and features are approximate.





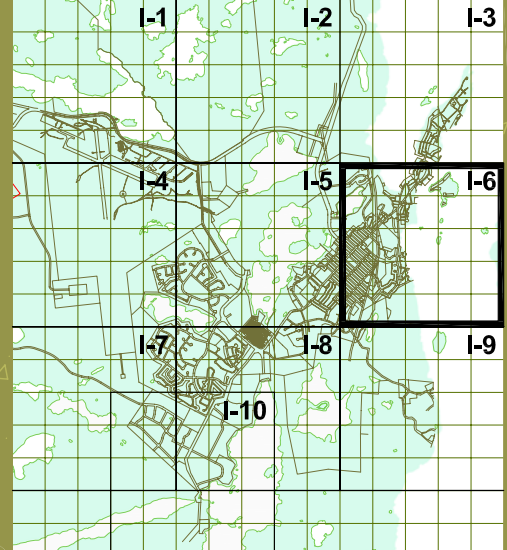
Non Vehicular Commuter Map

City of Yellowknife
 Integrated Parks, Trails and
 Open Space Development Study
 Map D I-6
 September 2005



Legend:

- PR Parks and Recreational Areas
- NP Natural Preservation/Greenspace
- Walking Trails
- Ski Trails
- GM Growth Management
- Capital Area
- Municipal Boundary
- Seismic Reserve
- Proposed Trail System
- Proposed Trail System (subject to change upon review)
- ▲ Pedestrian Crossing



**Model For
 Greenspace
 Development**

PR Public Parks and Recreation

- 100 Latham Island Park (N-13)
- 101 Bush Pilots Memorial Park (N-12)
- 102 Joliffe Island (O-12)
- 103 School Draw Rotary Park (M-10)
- 104 School Draw Park (M-9)
- 105 Public Park (M-9)
- 106 Olexin Park (L-8)
- 107 Forrest Drive Park (K-8,L-7)
- 108 Public Park (L-8)
- 109 Public Park (K-8)
- 110 Public Park (K-9)
- 111 Samba'ke Park (K-9)
- 112 McNiven Beach (J-8)
- 113 Past Gerry Murphy Arena Site (K-9)
- 114 Public Park (G-6)
- 115 Frame Lake South Tennis Courts (I-7)
- 116 Bristol Memorial Park (G-12, H-12)
- 117 Public Park (G-6)
- 118 Public Park (G-6)
- 119 Ruth Inch Memorial Pool (J-8)
- 120 Public Library (L-9)
- 121 Tennis Courts (J-8)
- 122 Parker Recreational Field (F-7)

- 123 Yellowknife Community Arena (J-8)
- 124 Public Park (F-8, G-8)
- 125 Doombos Park (L-10)
- 126 St. Joseph's Playing Field (H-7)
- 127 Lakeview Cemetery (H-11, H-12)
- 128 Public Park (O-13)
- 129 Public Park (O-13)
- 130 Fritz Theil Memorial Park (M-11)
- 131 Tommy Forrest Ball Park (K-8)
- 132 Yellowknife Ski Club (L-14)
- 133 Soccer and Ball Field at William McDonald Junior High (J-7)
- 134 Playing Field at Sir John Franklin High School (M-9)
- 135 Playing Field at Mildred Hall Elementary School (K-9)
- 136 Playing Field at Range Lake North School (G-9)
- 137 Jeske Park (G-9)
- 138 Yellowknife Golf Club (not shown)
- 139 Yellowknife Curling Club (J-8)
- 140 Yellowknife Multiplex (I-7)
- 141 Outdoor Ice Rink (K-10)

Institutional Facilities

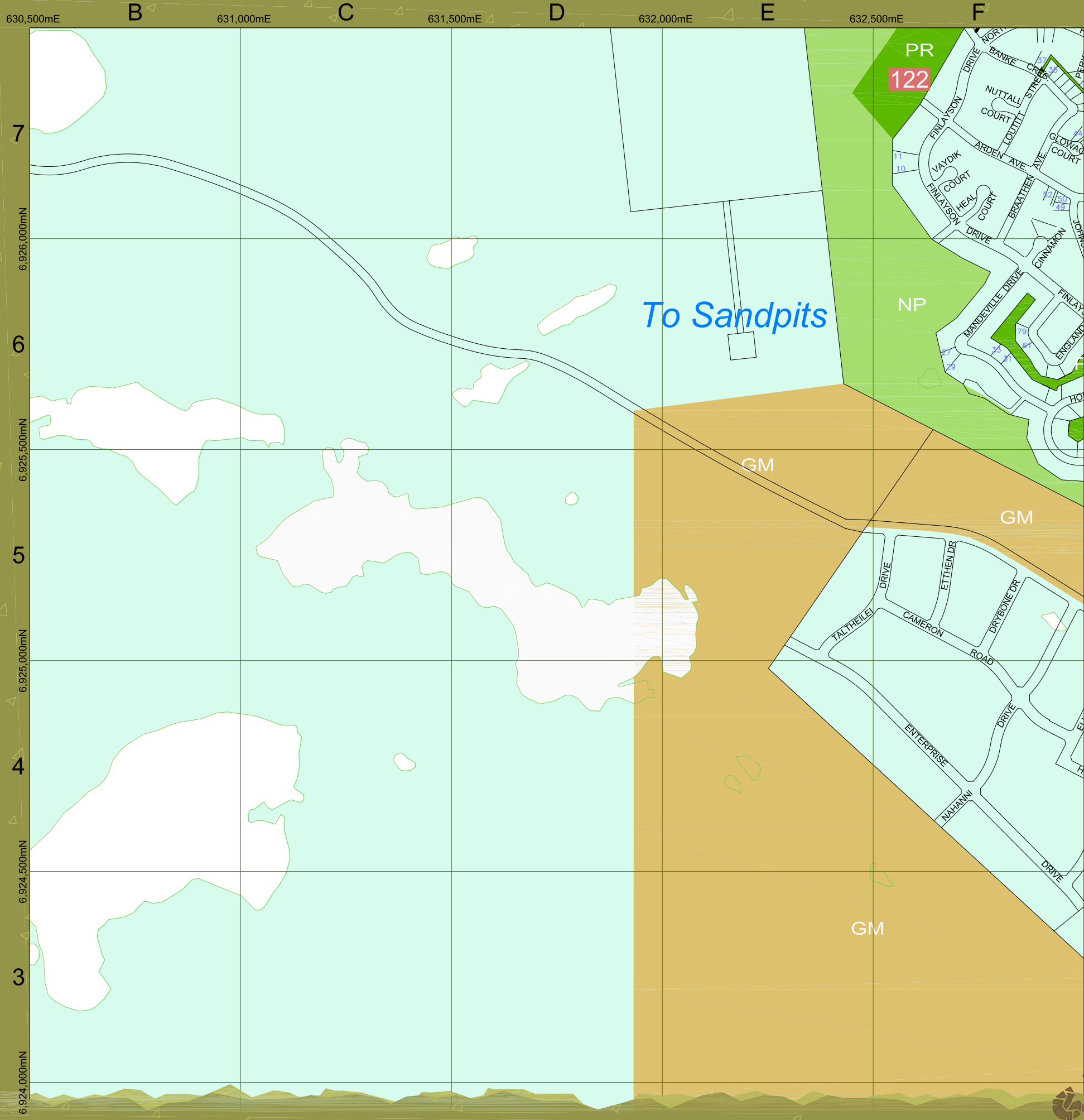
- 200 Solid Waste Facility (K-14)
- 201 Municipal Boat Launch (N-12)
- 202 St. Patrick High School (L-10, M-10)
- 203 Weledeh School (L-10, M-10)
- 204 Sir John Franklin High School (M-9)
- 205 Aurora College (K-8)
- 206 JH Sissons School (K-8)
- 207 Allain St. Cyr School (J-7)
- 208 William McDonald School (J-7)
- 209 Yellowknife Fire Department (I-7)
- 210 NJ Macpherson School (G-6)
- 211 St. Joseph School (H-7)
- 212 Range Lake North School (G-9)
- 213 Lakeview Cemetery (H-11)
- 214 Hospital (H-8)
- 215 Mildred Hall School (K-9)
- 216 City Hall (K-10)
- 217 RCMP (K-10)
- 218 DND (K-10)
- 219 Court House (L-10)
- 220 Visitor's Centre (K-10)
- 221 Museum (K-10)
- 222 Legislative Assembly (J-11)

Waterfront

- 300 Giant Mine Waterfront (M-17)
- 301 Waterfront Trail System
- 302 Waterfront Park (M-15)
- 303 Waterfront Viewpoint
- 304 Jackfish Ravine (L-13)
- 305 Back Bay Cemetery (L-13)
- 306 Waterfront Park (N-13)
- 307 Two Point Mooring Area (N-14)
- 308 Waterfront Park (O-13)
- 309 Community Docks (O-13)
- 310 Waterfront Park/Viewpoint (O-13)
- 311 Viewpoint (N-12)
- 312 Viewpoint (N-12)
- 313 Franklin Aves Walkway (N-12)
- 314 Day Use/Picnic Area (O-12)
- 315 Waterfront Park/Viewpoint (O-12)
- 316 Joliffe Island Park (O-11)
- 317 Floating Home Mooring (N-11, N10)
- 318 Viewpoint (N-11)
- 319 Woodyard Heritage Waterfront Park (N-11)
- 320 Dettian Ice Road Access (M-10)
- 321 Viewpoint (N-10)
- 322 Community Docks (N-9)
- 323 Viewpoint (N-8)
- 324 Waterfront Trail System
- 325 Waterfront Park/Day Use (O-7)
- 326 Milramar Boat Launch (N-7)
- 327 Fuel Barge Docking Facility (N-6)

This map is for DISCUSSION purposes only. Information provided is based on the best material at the time of production. Locations and features are approximate.





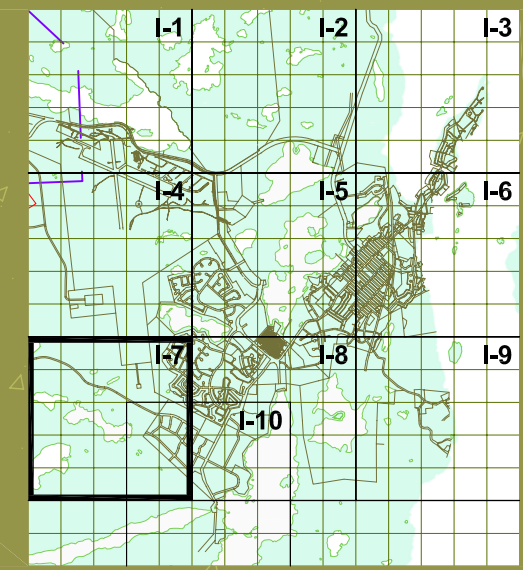
Non Vehicular Commuter Map

City of Yellowknife
 Integrated Parks, Trails and
 Open Space Development Study
 Map D I-7
 September 2005



Legend:

- PR Parks and Recreational Areas
- NP Natural Preservation/Greenspace
- Walking Trails
- Ski Trails
- GM Growth Management
- Capital Area
- Municipal Boundary
- Seismic Reserve
- Proposed Trail System (subject to change upon review)
- Proposed Trail System (subject to change upon review)
- Pedestrian Crossing



PR Public Parks and Recreation

- 100 Latham Island Park (N-13)
- 101 Bush Pilots Memorial Park (N-12)
- 102 Jolliffe Island (O-12)
- 103 School Draw Rotary Park (M-10)
- 104 School Draw Park (M-9)
- 105 Public Park (M-9)
- 106 Olexin Park (L-8)
- 107 Forrest Drive Park (K-8, L-7)
- 108 Public Park (L-8)
- 109 Public Park (K-8)
- 110 Public Park (K-9)
- 111 Samba'ke Park (K-9)
- 112 McNiven Beach (J-8)
- 113 Past Gerry Murphy Arena Site (K-9)
- 114 Public Park (G-6)
- 115 Frame Lake South Tennis Courts (I-7)
- 116 Bristol Memorial Park (G-12, H-12)
- 117 Public Park (G-6)
- 118 Public Park (G-6)
- 119 Ruth Inch Memorial Pool (J-8)
- 120 Public Library (L-9)
- 121 Tennis Courts (J-8)
- 122 Parker Recreational Field (F-7)

Institutional Facilities

- 123 Yellowknife Community Arena (J-8)
- 124 Public Park (F-8, G-8)
- 125 Doombos Park (L-10)
- 126 St. Joseph's Playing Field (H-7)
- 127 Lakeview Cemetery (H-11, H-12)
- 128 Public Park (O-13)
- 129 Public Park (O-13)
- 130 Fritz Thell Memorial Park (M-11)
- 131 Tommy Forrest Ball Park (K-8)
- 132 Yellowknife Ski Club (L-14)
- 133 Soccer and Ball Field at William McDonald Junior High (J-7)
- 134 Playing Field at Sir John Franklin High School (M-9)
- 135 Playing Field at Mildred Hall Elementary School (K-9)
- 136 Playing Field at Range Lake North School (G-9)
- 137 Jeske Park (G-9)
- 138 Yellowknife Golf Club (not shown)
- 139 Yellowknife Curling Club (J-8)
- 140 Yellowknife Multiplex (I-7)
- 141 Outdoor Ice Rink (K-10)

Waterfront

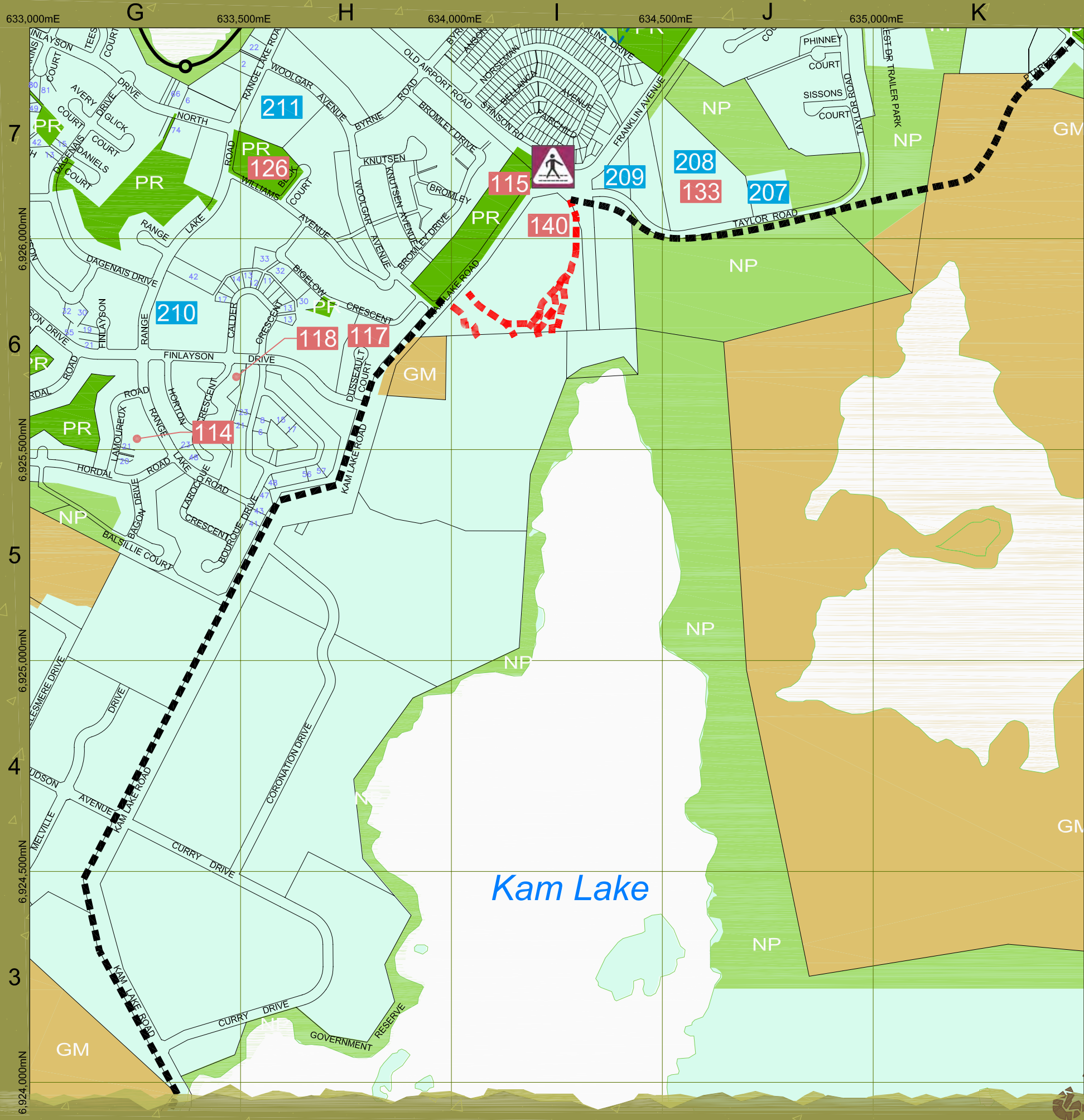
- 200 Solid Waste Facility (K-14)
- 201 Municipal Boat Launch (N-12)
- 202 St. Patrick High School (L-10, M-10)
- 203 Weledeh School (L-10, M-10)
- 204 Sir John Franklin High School (M-9)
- 205 Aurora College (K-9)
- 206 JH Sissons School (K-8)
- 207 Allain St. Cyr School (J-7)
- 208 William McDonald School (J-7)
- 209 Yellowknife Fire Department (I-7)
- 210 NJ Macpherson School (G-6)
- 211 St. Joseph School (H-7)
- 212 Range Lake North School (G-9)
- 213 Lakeview Cemetery (H-11)
- 214 Hospital (H-8)
- 215 Mildred Hall School (K-9)
- 216 City Hall (K-10)
- 217 RCMP (K-10)
- 218 DND (K-10)
- 219 Court House (L-10)
- 220 Visitor's Centre (K-10)
- 221 Museum (K-10)
- 222 Legislative Assembly (J-11)

Waterfront

- 300 Giant Mine Waterfront (M-17)
- 301 Waterfront Trail System
- 302 Waterfront Park (M-15)
- 303 Waterfront Viewpoint
- 304 Jackfish Ravine (L-13)
- 305 Back Bay Cemetery (L-13)
- 306 Waterfront Park (N-13)
- 307 Two Point Mooring Area (N-14)
- 308 Waterfront Park (O-13)
- 309 Community Docks (O-13)
- 310 Waterfront Park/Viewpoint (O-13)
- 311 Viewpoint (N-12)
- 312 Viewpoint (N-12)
- 313 Franklin Aves Walkway (N-12)
- 314 Day Use/Picnic Area (O-12)
- 315 Waterfront Park/Viewpoint (O-12)
- 316 Jolliffe Island Park (O-11)
- 317 Floating Home Mooring (N-11, N10)
- 318 Viewpoint (N-11)
- 319 Woodyard Heritage Waterfront Park (N-11)
- 320 Dettah Ice Road Access (M-10)
- 321 Viewpoint (N-10)
- 322 Community Docks (N-9)
- 323 Viewpoint (N-8)
- 324 Waterfront Trail System
- 325 Waterfront Park/Day Use (O-7)
- 326 Milnamur Boat Launch (N-7)
- 327 Fuel Barge Docking Facility (N-6)

This map is for DISCUSSION purposes only. Information provided is based on the best material at the time of production. Locations and features are approximate.





Non Vehicular Commuter Map

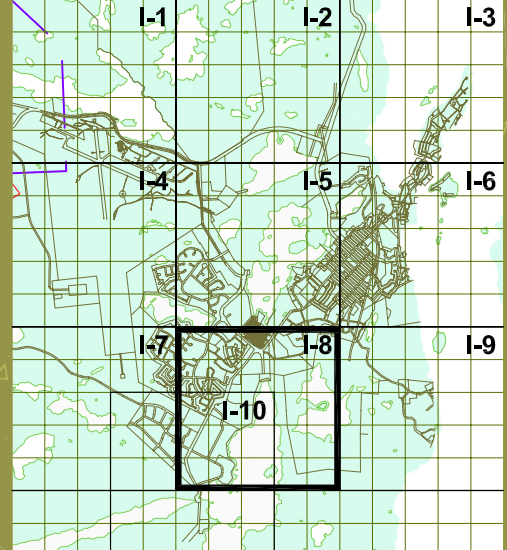


City of Yellowknife
 Integrated Parks, Trails and
 Open Space Development Study
 Map D I-8
 September 2005



Legend:

- PR Parks and Recreational Areas
- NP Natural Preservation/Greenspace
- Walking Trails
- Ski Trails
- GM Growth Management
- Capital Area
- Municipal Boundary
- Seismic Reserve
- Proposed Trail System
- Proposed Trail System (subject to change upon review)
- ▲ Pedestrian Crossing



PR Public Parks and Recreation

- 100 Latham Island Park (N-13)
- 101 Bush Pilots Memorial Park (N-12)
- 102 Jolliffe Island (O-12)
- 103 School Draw Rotary Park (M-10)
- 104 School Draw Park (M-9)
- 105 Public Park (M-9)
- 106 Olexin Park (L-8)
- 107 Forrest Drive Park (K-8,L-7)
- 108 Public Park (L-8)
- 109 Public Park (K-8)
- 110 Public Park (K-9)
- 111 Samba'ke Park (K-9)
- 112 McNiven Beach (J-8)
- 113 Past Gerry Murphy Arena Site (K-9)
- 114 Public Park (G-6)
- 115 Frame Lake South Tennis Courts (I-7)
- 116 Bristol Memorial Park (G-12, H-12)
- 117 Public Park (G-6)
- 118 Public Park (G-6)
- 119 Ruth Inch Memorial Pool (J-8)
- 120 Public Library (L-9)
- 121 Tennis Courts (J-8)
- 122 Parker Recreational Field (F-7)

Institutional Facilities

- 123 Yellowknife Community Arena (J-8)
- 124 Public Park (F-8, G-8)
- 125 Doombos Park (L-10)
- 126 St. Joseph's Playing Field (H-7)
- 127 Lakeview Cemetery (H-11, H-12)
- 128 Public Park (O-13)
- 129 Public Park (K-9)
- 130 Fritz Thell Memorial Park (M-11)
- 131 Tommy Forrest Ball Park (K-8)
- 132 Yellowknife Ski Club (L-14)
- 133 Soccer and Ball Field at William McDonald Junior High (J-7)
- 134 Playing Field at Sir John Franklin High School (M-9)
- 135 Playing Field at Mildred Hall Elementary School (K-9)
- 136 Playing Field at Range Lake North School (G-9)
- 137 Jeske Park (G-9)
- 138 Yellowknife Golf Club (not shown)
- 139 Yellowknife Curling Club (J-8)
- 140 Yellowknife Multiplex (I-7)
- 141 Outdoor Ice Rink (K-10)

Waterfront

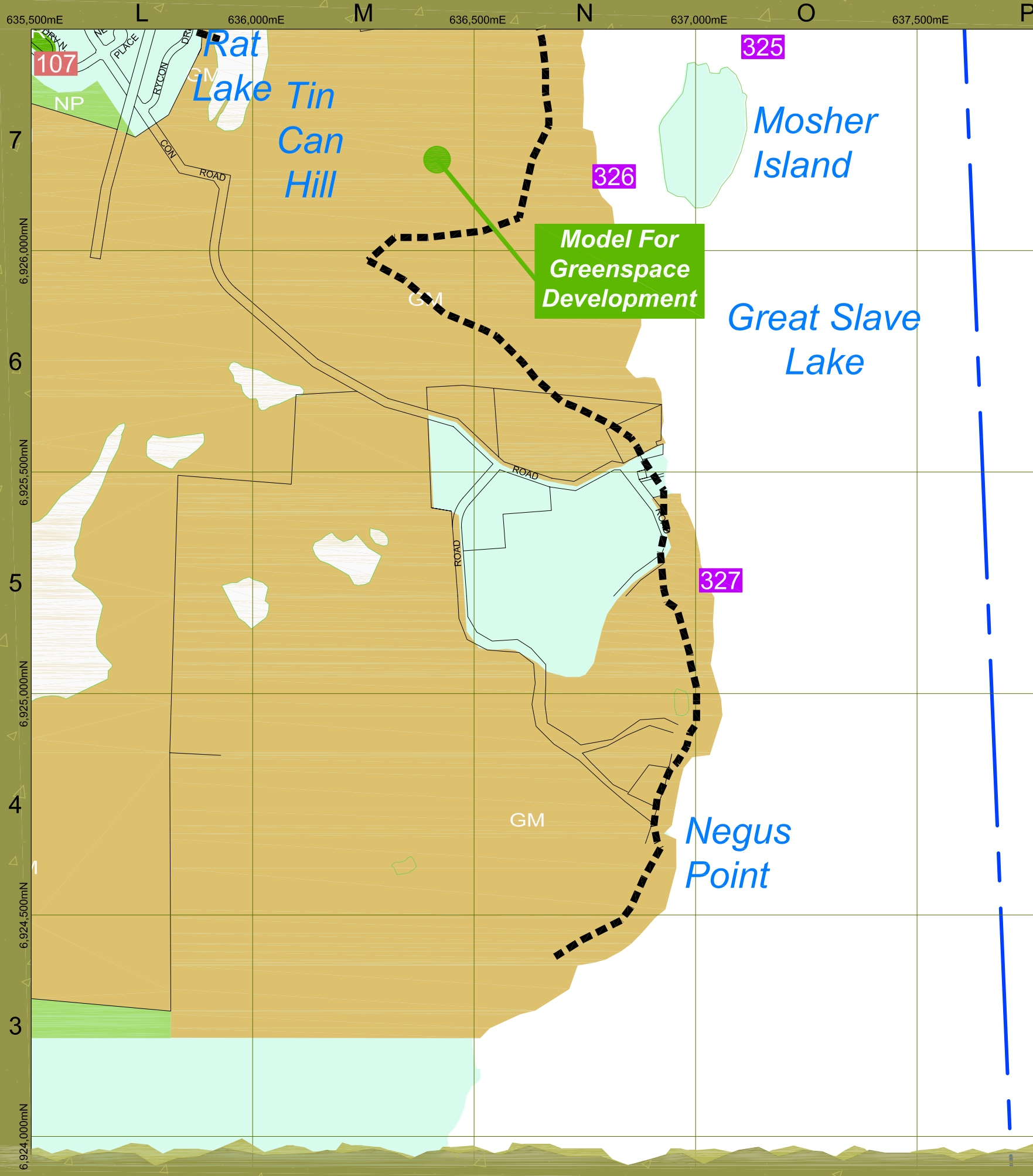
- 200 Solid Waste Facility (K-14)
- 201 Municipal Boat Launch (N-12)
- 202 St. Patrick High School (L-10, M-10)
- 203 Weledah School (L-10, M-10)
- 204 Sir John Franklin High School (M-9)
- 205 Aurora College (K-9)
- 206 JH Sissons School (K-8)
- 207 Allain St. Cyr School (J-7)
- 208 William McDonald School (J-7)
- 209 Yellowknife Fire Department (I-7)
- 210 NJ Macpherson School (G-6)
- 211 St. Joseph School (H-7)
- 212 Range Lake North School (G-9)
- 213 Lakeview Cemetery (H-11)
- 214 Hospital (H-8)
- 215 Mildred Hall School (K-9)
- 216 City Hall (K-10)
- 217 RCMP (K-10)
- 218 DND (K-10)
- 219 Court House (L-10)
- 220 Visitor's Centre (K-10)
- 221 Museum (K-10)
- 222 Legislative Assembly (J-11)

Waterfront

- 300 Giant Mine Waterfront (M-17)
- 301 Waterfront Trail System
- 302 Waterfront Park (M-15)
- 303 Waterfront Viewpoint
- 304 Jackfish Ravine (L-13)
- 305 Back Bay Cemetery (L-13)
- 306 Waterfront Park (N-13)
- 307 Two Point Mooring Area (N-14)
- 308 Waterfront Park (O-13)
- 309 Community Docks (O-13)
- 310 Waterfront Park/Viewpoint (O-13)
- 311 Viewpoint (N-12)
- 312 Viewpoint (N-12)
- 313 Franklin Aves Walkway (N-12)
- 314 Day Use/Plaza Area (O-12)
- 315 Waterfront Park/Viewpoint (O-12)
- 316 Jolliffe Island Park (O-11)
- 317 Floating Home Mooring (N-11, N10)
- 318 Viewpoint (N-11)
- 319 Woodyard Heritage Waterfront Park (N-11)
- 320 Dettain Ice Road Access (M-10)
- 321 Viewpoint (N-10)
- 322 Community Docks (N-9)
- 323 Viewpoint (N-8)
- 324 Waterfront Trail System
- 325 Waterfront Park/Day Use (O-7)
- 326 Milner Boat Launch (N-7)
- 327 Fuel Barge Docking Facility (N-6)

This map is for DISCUSSION purposes only. Information provided is based on the best material at the time of production. Locations and features are approximate.





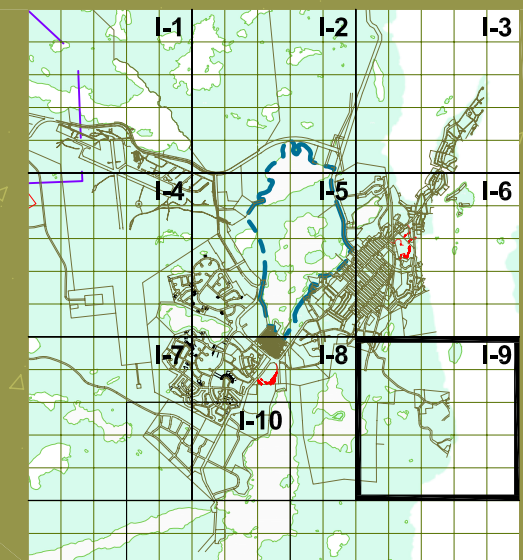
Non Vehicular Commuter Map

City of Yellowknife
 Integrated Parks, Trails and
 Open Space Development Study
 Map D I-9
 September 2005



Legend:

- PR Parks and Recreational Areas
- NP Natural Preservation/Greenspace
- Walking Trails
- Ski Trails
- GM Growth Management
- Capital Area
- Municipal Boundary
- Seismic Reserve
- Proposed Trail System
- Proposed Trail System (subject to change upon review)
- Pedestrian Crossing



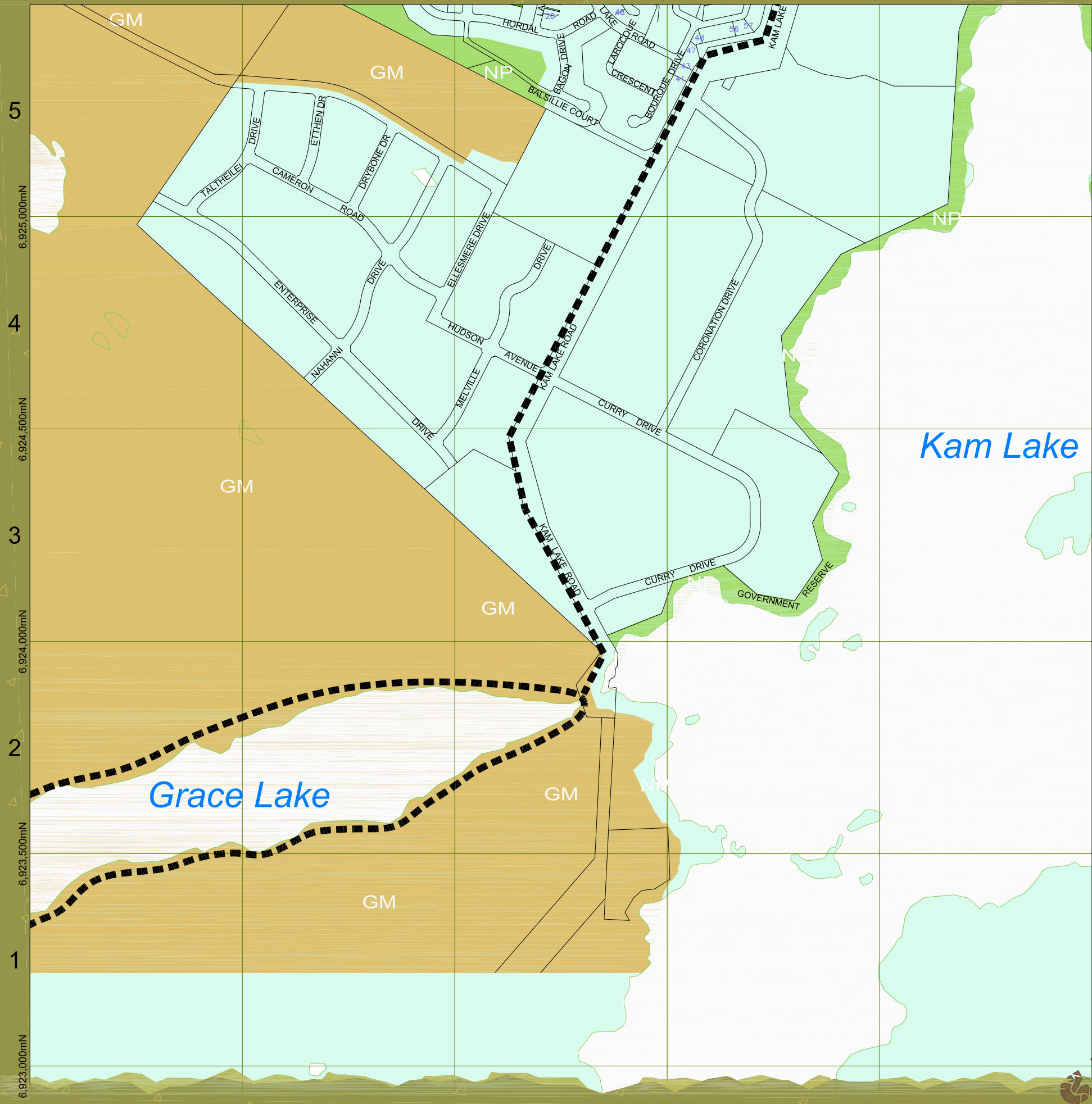
- View Point
- Wildlife Viewing
- Heritage Site
- Hiking

PR Public Parks and Recreation	Institutional Facilities	Waterfront
100 Latham Island Park (N-13)	123 Yellowknife Community Arena (J-8)	200 Solid Waste Facility (K-14)
101 Bush Pilots Memorial Park (N-12)	124 Public Park (F-8, G-8)	201 Municipal Boat Launch (N-12)
102 Jolliffe Island (O-12)	125 Doombos Park (L-10)	202 St. Patrick High School (L-10, M-10)
103 School Draw Rotary Park (M-10)	126 St. Joseph's Playing Field (H-7)	203 Weledeh School (L-10, M-10)
104 School Draw Park (M-9)	127 Lakeview Cemetery (H-11, H-12)	204 Sir John Franklin High School (M-9)
105 Public Park (M-9)	128 Public Park (O-13)	205 Aurora College (K-9)
106 Olexin Park (L-8)	129 Public Park (O-13)	206 JH Sissons School (K-8)
107 Forrest Drive Park (K-8, L-7)	130 Fritz Thell Memorial Park (M-11)	207 Allain St. Cyr School (J-7)
108 Public Park (L-8)	131 Tommy Forrest Ball Park (K-8)	208 William McDonald School (J-7)
109 Public Park (K-8)	132 Yellowknife Ski Club (L-14)	209 Yellowknife Fire Department (I-7)
110 Public Park (K-9)	133 Soccer and Ball Field at William McDonald Junior High (J-7)	210 NJ Macpherson School (G-6)
111 Samba'ke Park (K-9)	134 Playing Field at Sir John Franklin High School (M-9)	211 St. Joseph School (H-7)
112 McNiven Beach (J-8)	135 Playing Field at Mildred Hall Elementary School (K-9)	212 Range Lake North School (G-9)
113 Past Gerry Murphy Arena Site (K-9)	136 Playing Field at Range Lake North School (G-9)	213 Lakeview Cemetery (H-11)
114 Public Park (G-6)	137 Jeske Park (G-9)	214 Hospital (H-8)
115 Frame Lake South Tennis Courts (I-7)	138 Yellowknife Golf Club (not shown)	215 Mildred Hall School (K-9)
116 Bristol Memorial Park (G-12, H-12)	139 Yellowknife Curling Club (J-8)	216 City Hall (K-10)
117 Public Park (G-6)	140 Yellowknife Multiplex (I-7)	217 RCMP (K-10)
118 Public Park (G-6)	141 Outdoor Ice Rink (K-10)	218 DND (K-10)
119 Ruth Inch Memorial Pool (J-8)		219 Court House (L-10)
120 Public Library (L-9)		220 Visitor's Centre (K-10)
121 Tennis Courts (J-8)		221 Museum (K-10)
122 Parker Recreational Field (F-7)		222 Legislative Assembly (J-11)
		300 Giant Mine Waterfront (M-17)
		301 Waterfront Trail System
		302 Waterfront Park (M-15)
		303 Waterfront Viewpoint
		304 Jackfish Ravine (L-13)
		305 Back Bay Cemetery (L-13)
		306 Waterfront Park (N-13)
		307 Two Point Mooring Area (N-14)
		308 Waterfront Park (O-13)
		309 Community Docks (O-13)
		310 Waterfront Park/Viewpoint (O-13)
		311 Viewpoint (N-12)
		312 Viewpoint (N-12)
		313 Franklin Aves Walkway (N-12)
		314 Day Use/Picnic Area (O-12)
		315 Waterfront Park/Viewpoint (O-12)
		316 Jolliffe Island Park (O-11)
		317 Floating Home Mooring (N-11, N10)
		318 Viewpoint (N-11)
		319 Woodyard Heritage Waterfront Park (N-11)
		320 Dettah Ice Road Access (M-10)
		321 Viewpoint (N-10)
		322 Community Docks (N-9)
		323 Viewpoint (N-8)
		324 Waterfront Trail System
		325 Waterfront Park/Day Use (O-7)
		326 Milnamur Boat Launch (N-7)
		327 Fuel Barge Docking Facility (N-6)

This map is for DISCUSSION purposes only. Information provided is based on the best material at the time of production. Locations and features are approximate.



632,000mE E F G H I
632,500mE 633,000mE 633,500mE 634,000mE



Non Vehicular Commuter Map

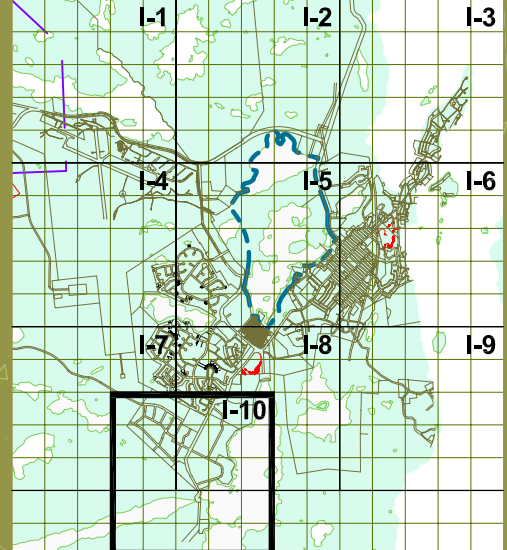


City of Yellowknife
Integrated Parks, Trails and
Open Space Development Study September 2005
Map D I-10



Legend:

- PR Parks and Recreational Areas
- NP Natural Preservation/Greenspace
- Walking Trails
- Ski Trails
- GM Growth Management
- Capital Area
- Municipal Boundary
- Seismic Reserve
- Proposed Trail System
- Proposed Trail System (subject to change upon review)
- ▲ Pedestrian Crossing



PR Public Parks and Recreation

- 100 Latham Island Park (N-13)
- 101 Bush Pilots Memorial Park (N-12)
- 102 Jolliffe Island (O-12)
- 103 School Draw Rotary Park (M-10)
- 104 School Draw Park (M-9)
- 105 Public Park (M-9)
- 106 Olexin Park (L-8)
- 107 Forrest Drive Park (K-8,L-7)
- 108 Public Park (L-8)
- 109 Public Park (K-8)
- 110 Public Park (K-9)
- 111 Samba'ke Park (K-9)
- 112 McNiven Beach (J-8)
- 113 Past Gerry Murphy Arena Site (K-9)
- 114 Public Park (G-6)
- 115 Frame Lake South Tennis Courts (I-7)
- 116 Bristol Memorial Park (G-12, H-12)
- 117 Public Park (G-6)
- 118 Public Park (G-6)
- 119 Ruth Inch Memorial Pool (J-8)
- 120 Public Library (L-9)
- 121 Tennis Courts (J-8)
- 122 Parker Recreational Field (F-7)

- 123 Yellowknife Community Arena (J-8)
- 124 Public Park (F-8, G-8)
- 125 Doombos Park (L-10)
- 126 St. Joseph's Playing Field (H-7)
- 127 Lakeview Cemetery (H-11, H-12)
- 128 Public Park (O-13)
- 129 Public Park (O-13)
- 130 Fritz Thell Memorial Park (M-11)
- 131 Tommy Forrest Ball Park (K-8)
- 132 Yellowknife Ski Club (L-14)
- 133 Soccer and Ball Field at William McDonald Junior High (J-7)
- 134 Playing Field at Sir John Franklin High School (M-9)
- 135 Playing Field at Mildred Hall Elementary School (K-9)
- 136 Playing Field at Range Lake North School (G-9)
- 137 Jeske Park (G-9)
- 138 Yellowknife Golf Club (not shown)
- 139 Yellowknife Curling Club (J-8)
- 140 Yellowknife Multiplex (I-7)
- 141 Outdoor Ice Rink (K-10)

Institutional Facilities

- 200 Solid Waste Facility (K-14)
- 201 Municipal Boat Launch (N-12)
- 202 St. Patrick High School (L-10, M-10)
- 203 Weledah School (L-10, M-10)
- 204 Sir John Franklin High School (M-9)
- 205 Aurora College (K-9)
- 206 JH Sissons School (K-8)
- 207 Allan St. Cyr School (J-7)
- 208 William McDonald School (J-7)
- 209 Yellowknife Fire Department (I-7)
- 210 NJ Macpherson School (G-6)
- 211 St. Joseph School (H-7)
- 212 Range Lake North School (G-9)
- 213 Lakeview Cemetery (H-11)
- 214 Hospital (H-8)
- 215 Mildred Hall School (K-9)
- 216 City Hall (K-10)
- 217 RCMP (K-10)
- 218 DND (K-10)
- 219 Court House (L-10)
- 220 Visitor's Centre (K-10)
- 221 Museum (K-10)
- 222 Legeslatlve Assembly (J-11)

Waterfront

- 300 Giant Mine Waterfront (M-17)
- 301 Waterfront Trail System
- 302 Waterfront Park (M-15)
- 303 Waterfront Viewpoint
- 304 Jackfish Ravine (L-13)
- 305 Back Bay Cemetery (L-13)
- 306 Waterfront Park (N-13)
- 307 Two Point Mooring Area (N-14)
- 308 Waterfront Park (O-13)
- 309 Community Docks (O-13)
- 310 Waterfront Park/Viewpoint (O-13)
- 311 Viewpoint (N-12)
- 312 Viewpoint (N-12)
- 313 Franklin Aves Walkway (N-12)
- 314 Day Use/Picnic Area (O-12)
- 315 Waterfront Park/Viewpoint (O-12)
- 316 Jolliffe Island Park (O-11)
- 317 Floating Home Mooring (N-11, N10)
- 318 Viewpoint (N-11)
- 319 Woodyard Heritage Waterfront Park (N-11)
- 320 Dettah Ice Road Access (M-10)
- 321 Viewpoint (N-10)
- 322 Community Docks (N-9)
- 323 Viewpoint (N-8)
- 324 Waterfront Trail System
- 325 Waterfront Park/Day Use (O-7)
- 326 Miramar Boat Launch (N-7)
- 327 Fuel Barge Docking Facility (N-6)

This map is for DISCUSSION purposes only. Information provided is based on the best material at the time of production. Locations and features are approximate.

