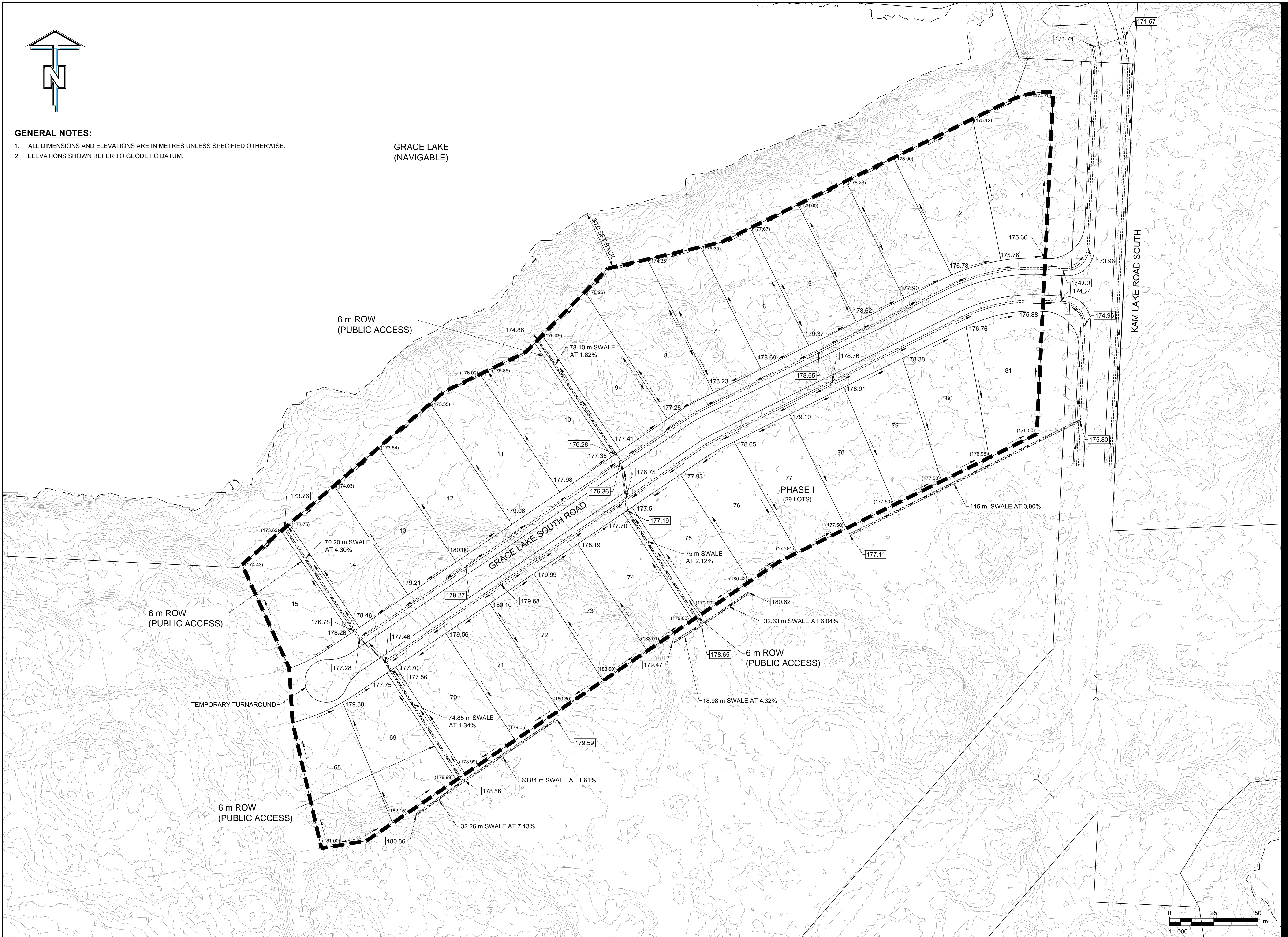


**GENERAL NOTES:**

1. ALL DIMENSIONS AND ELEVATIONS ARE IN METRES UNLESS SPECIFIED OTHERWISE.
2. ELEVATIONS SHOWN REFER TO GEODETIC DATUM.

GRACE LAKE  
(NAVIGABLE)



**PROJECT**

Grace Lake South  
Residential Development  
Phase 1

**CLIENT**

City of Yellowknife

4807-52 Street P.O.Box 580  
Yellowknife, Northwest Territories  
867.920.5600 tel 867.920.5649 fax

**CONSULTANT**

AECOM Canada Ltd.  
#101 - 18817 Stony Plain Road NW  
Edmonton, Alberta  
780.486.7000 tel 780.486.7070 fax  
www.aecom.com

**LEGEND**

- STAGE BOUNDARY
- AS-BUILT LOT ELEV (EX GROUND ELEV)
- DITCH
- DIRECTION OF FLOW
- SWALE
- CULVERT
- LOT NUMBER
- SWALE / CULVERT INVERT

**REGISTRATION**

**ISSUE/REVISION**

I/R	DATE	DESCRIPTION
3	2016/12/16	ISSUED FOR RECORD
2	2016/07/15	ISSUED FOR CONSTRUCTION
1	2016/04/12	ISSUED FOR ADDENDUM #1
0	2016/03/31	ISSUED FOR TENDER

**KEY PLAN**

**PROJECT NUMBER**

60344217

**SHEET TITLE**

DRAINAGE AND LOT GRADING PLAN  
PHASE 1

**SHEET NUMBER**

60344217-SHT-00-C-1001

