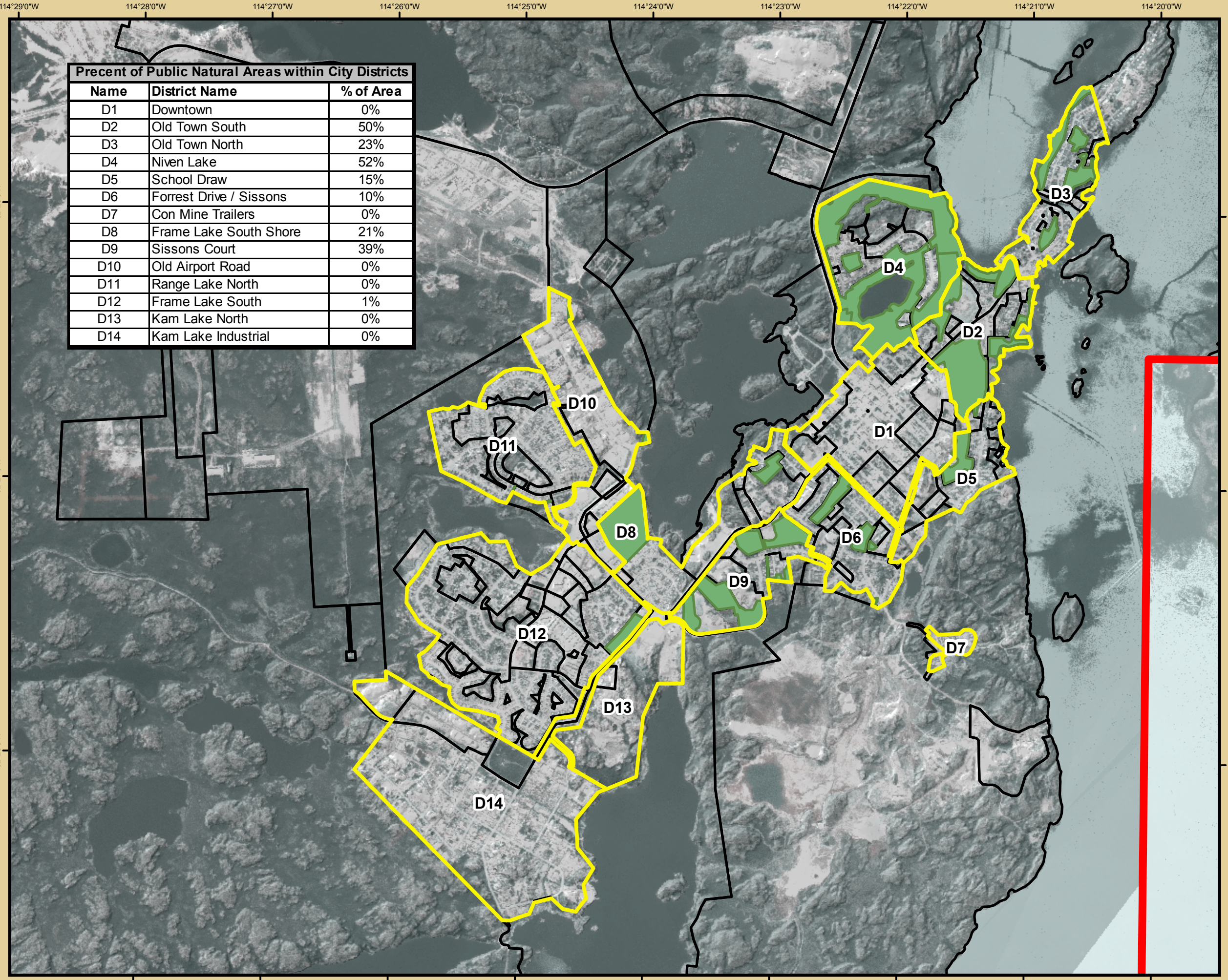


Percent of Public Natural Areas within City Districts

Name	District Name	% of Area
D1	Downtown	0%
D2	Old Town South	50%
D3	Old Town North	23%
D4	Niven Lake	52%
D5	School Draw	15%
D6	Forrest Drive / Sissons	10%
D7	Con Mine Trailers	0%
D8	Frame Lake South Shore	21%
D9	Sissons Court	39%
D10	Old Airport Road	0%
D11	Range Lake North	0%
D12	Frame Lake South	1%
D13	Kam Lake North	0%
D14	Kam Lake Industrial	0%

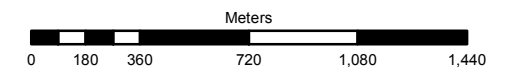
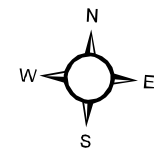


Natural Area Preservation Strategy

Public Natural Areas within Dillon Delineated Districts

Legend

- Public Natural Areas
- Urban Districts



1:25,000

Projection: NAD-83 Zone 11

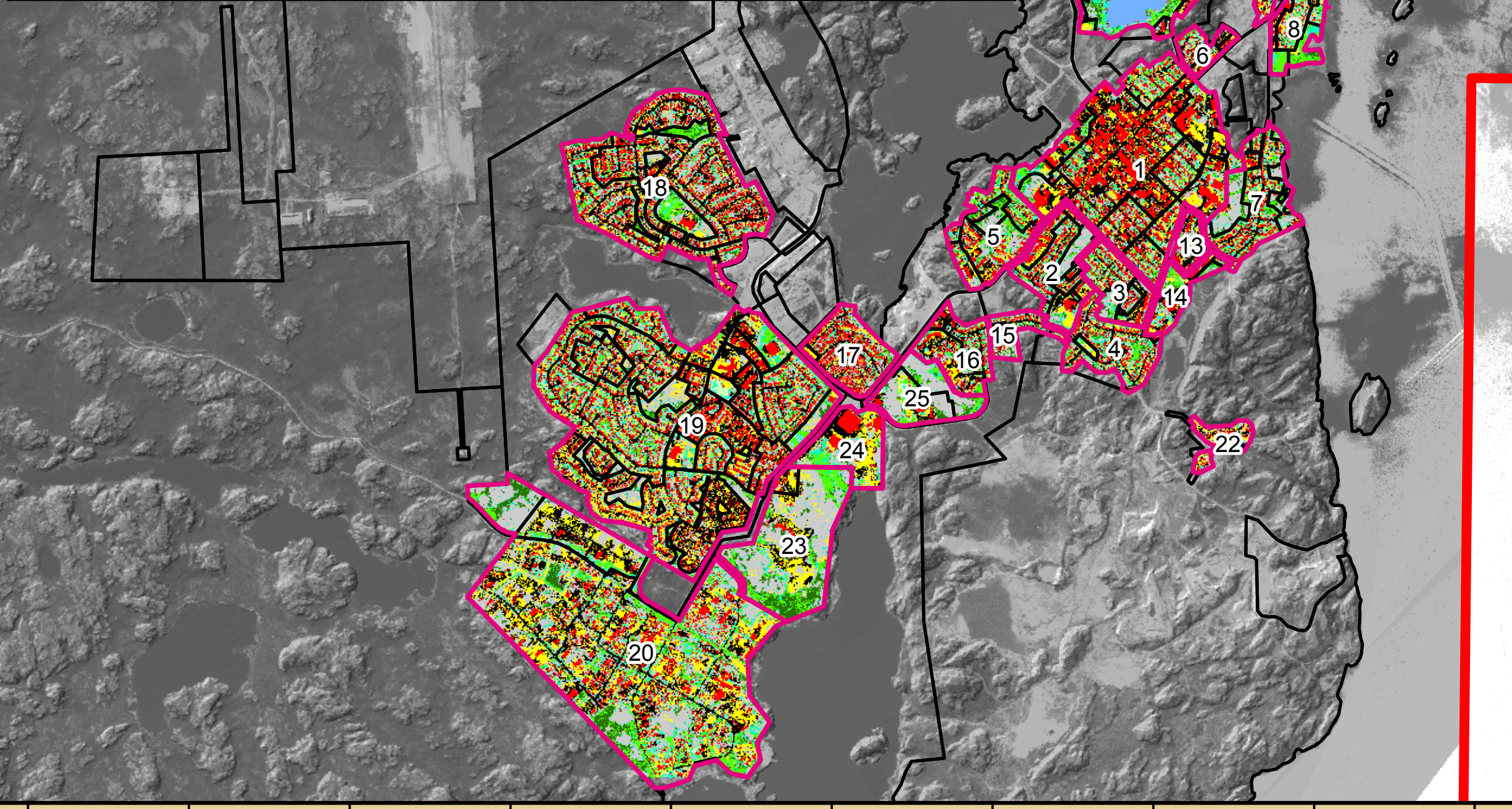


SMART GROWTH PLAN

Project Name: Yellowknife EPS
 Map Created By: AZ
 Map Checked By: AP
 Date Created: Sept 8, 2009
 Date Modified: May 20, 2010
 File Name: %NaturalArea ...Districts_Sept09.mxd

114°29'0"W 114°28'0"W 114°27'0"W 114°26'0"W 114°25'0"W 114°24'0"W 114°23'0"W 114°22'0"W 114°21'0"W 114°20'0"W

Neighbourhood Name	ID #	Water	Exposed Rock	Pavement	Deciduous Trees	Coniferous Trees	Wetland and Tall Grasses	Buildings	Short Vegetation	Gravel & Disturbance
Downtown Core	1	0%	15%	27%	5%	2%	5%	29%	1%	16%
Sissons School area	2	0%	31%	13%	9%	5%	9%	19%	2%	12%
Con Road North	3	0%	30%	18%	9%	5%	10%	16%	2%	9%
Con Road South	4	0%	20%	18%	11%	5%	11%	21%	5%	9%
Matonabee	5	0%	27%	13%	12%	9%	8%	17%	2%	12%
Trails End & Franklin Trailers	6	0%	26%	23%	5%	3%	8%	21%	1%	13%
School Draw	7	0%	33%	13%	13%	8%	9%	15%	2%	6%
Willow Flats - Wood Yard	8	1%	19%	9%	26%	4%	12%	14%	2%	13%
Peace River Flats	9	0%	28%	5%	23%	5%	17%	12%	3%	7%
Niven Lake Development	10	11%	34%	10%	12%	13%	7%	4%	0%	8%
The Rock	11	10%	22%	19%	5%	2%	6%	19%	1%	15%
Latham Island	12	4%	27%	8%	20%	10%	12%	11%	2%	6%
49th & 54th Ave Apartments	13	0%	21%	24%	3%	2%	6%	24%	1%	18%
Rock Bottom	14	0%	22%	17%	15%	8%	8%	18%	2%	9%
Forest Drive	15	0%	31%	19%	6%	6%	8%	20%	1%	8%
Sissons Court	16	0%	21%	24%	7%	5%	8%	20%	2%	13%
Northlands	17	0%	24%	19%	5%	2%	5%	32%	1%	11%
Range Lake North	18	0%	24%	24%	7%	3%	7%	22%	3%	9%
Frame Lake South	19	0%	22%	21%	7%	2%	9%	21%	4%	14%
Kam Lake Industrial	20	0%	30%	19%	9%	5%	7%	11%	1%	18%
N'Dio	21	0%	33%	8%	17%	11%	10%	9%	1%	10%
Con Mine Trailers	22	0%	31%	24%	2%	1%	3%	11%	0%	28%
Corrections	23	0%	43%	8%	14%	14%	5%	3%	0%	13%
Multiplex	24	0%	24%	19%	8%	3%	7%	16%	1%	23%
William Mac School	25	0%	47%	6%	13%	9%	8%	7%	4%	6%

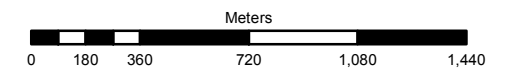
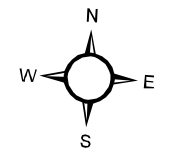


Natural Area Preservation Strategy

Landcover Classification of Urban Neighbourhoods using Quickbird Satellite Imagery

Legend

- Community Boundary
- Urban Neighbourhood
- Water
- Exposed Rock
- Pavement
- Deciduous Trees
- Coniferous Trees
- Wetland and Tall Grass
- Buildings
- Short Vegetation / Grass
- Gravel and Disturbance



1:25,000

Projection: NAD-83 Zone 11



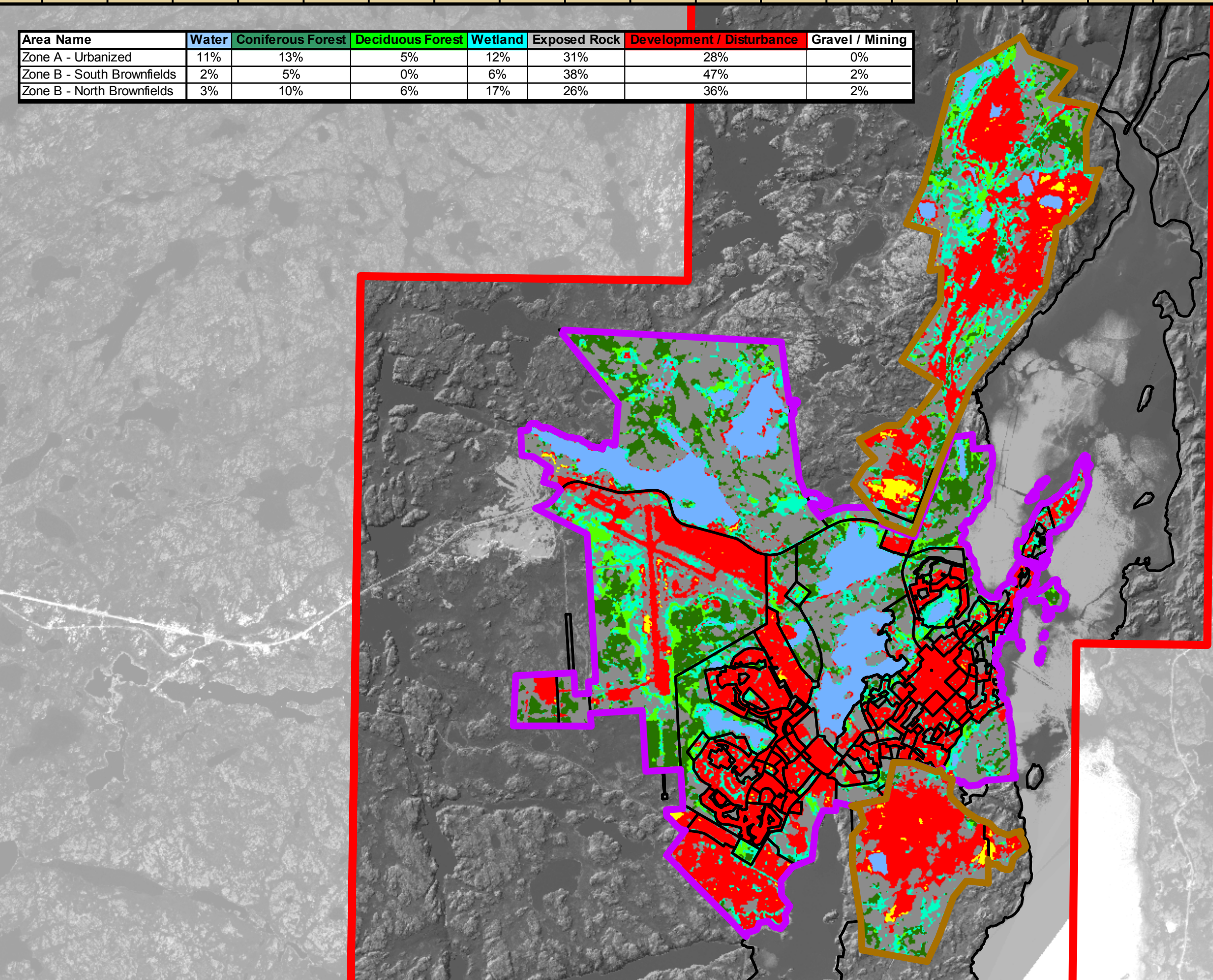
SMART GROWTH PLAN

Project Name: Yellowknife EPS
 Map Created By: AZ
 Map Checked By: AP
 Date Created: July 6, 2009
 Date Modified: May 21, 2010
 File Name: Neighbourhood_...Classification_July09.mxd

114°29'0"W 114°28'0"W 114°27'0"W 114°26'0"W 114°25'0"W 114°24'0"W 114°23'0"W 114°22'0"W 114°21'0"W 114°20'0"W

114°36'0"W 114°35'0"W 114°34'0"W 114°33'0"W 114°32'0"W 114°31'0"W 114°30'0"W 114°29'0"W 114°28'0"W 114°27'0"W 114°26'0"W 114°25'0"W 114°24'0"W 114°23'0"W 114°22'0"W 114°21'0"W 114°20'0"W 114°19'0"W 114°18'0"W


Area Name	Water	Coniferous Forest	Deciduous Forest	Wetland	Exposed Rock	Development / Disturbance	Gravel / Mining
Zone A - Urbanized	11%	13%	5%	12%	31%	28%	0%
Zone B - South Brownfields	2%	5%	0%	6%	38%	47%	2%
Zone B - North Brownfields	3%	10%	6%	17%	26%	36%	2%

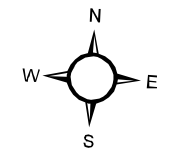


Natural Area Preservation Strategy

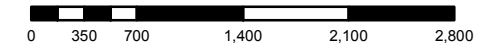
Landcover Classification of Urban Areas and Brownfields using Spot-5 Satellite Imagery

Legend

-  Community Boundary
-  A - Urbanized
-  B - Brownfield
-  Water
-  Coniferous Forest
-  Deciduous Forest
-  Wetland
-  Exposed Rock
-  Development / Disturbance
-  Gravel / Mining



Meters



1:50,000

Projection: NAD-83 Zone 11

DILLON
CONSULTING

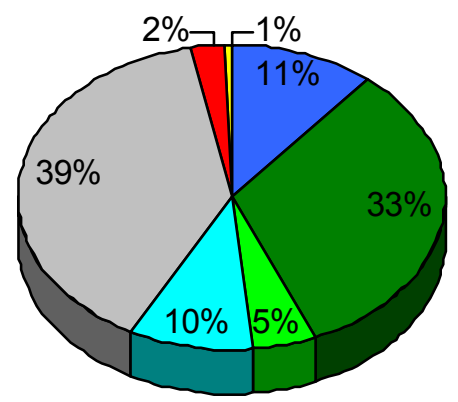


CITY OF YELLOWKNIFE
SMART GROWTH PLAN

Project Name: Yellowknife EPS
 Map Created By: AZ
 Map Checked By: AP
 Date Created: July 6, 2009
 Date Modified: May 21, 2010
 File Name: ZoneB_...Classification_July09.mxd

114°36'0"W 114°35'0"W 114°34'0"W 114°33'0"W 114°32'0"W 114°31'0"W 114°30'0"W 114°29'0"W 114°28'0"W 114°27'0"W 114°26'0"W 114°25'0"W 114°24'0"W 114°23'0"W 114°22'0"W 114°21'0"W 114°20'0"W 114°19'0"W 114°18'0"W

Landcover Classification Results*



- Water
- Exposed Rock
- Deciduous Trees
- Coniferous Trees
- Wetland and Tall Grass
- Development & Disturbance
- Gravel & Mining

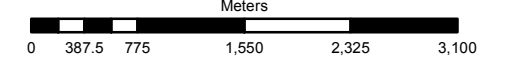
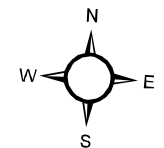
* This classification uses SPOT-5 satellite imagery

Natural Area Preservation Strategy

Landcover Classification of Unclassified Natural Areas using Spot-5 Satellite Imagery

Legend

- Community Boundary
- Zone C: Non-urbanized Area
- Water
- Coniferous Forest
- Deciduous Forest
- Wetland
- Exposed Rock
- Development / Disturbance
- Gravel / Mining



1:55,000

Projection: NAD-83 Zone 11

DILLON CONSULTING







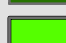
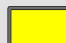



**CITY OF YELLOWKNIFE
SMART GROWTH PLAN**

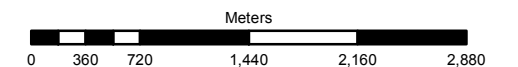
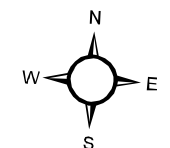
Project Name: Yellowknife EPS
 Map Created By: AZ
 Map Checked By: AP
 Date Created: July 6, 2009
 Date Modified: May 10, 2010
 File Name: ZoneC_...Classification_July09.mxd

Natural Area Preservation Strategy

Slope of Terrain within the City of Yellowknife

Legend

-  Community Boundary
-  A - Urbanized
-  B - Brownfield
-  C - Non-Urbanized Areas
-  0-2% Slope
-  2-5% Slope
-  5-10% Slope
-  10-15% Slope
-  >15% Slope



1:50,000

Projection: NAD-83 Zone 11

DILLON
CONSULTING



CITY OF YELLOWKNIFE
SMART GROWTH PLAN

Project Name: Yellowknife EPS
 Map Created By: AZ
 Map Checked By: AP
 Date Created: July 8, 2009
 Date Modified: May 20, 2010
 File Name: YK_Slope_July09.mxd

