

OLLERHEAD & ASSOCIATES LTD.
CANADA LANDS SURVEYORS
AND ENGINEERS

17 CORONATION DRIVE
YELLOWKNIFE, NT
X1A 0G4
PH: (867)673-9690
FAX: (867)669-6334
PROJECT NUMBER : 26-35-NM

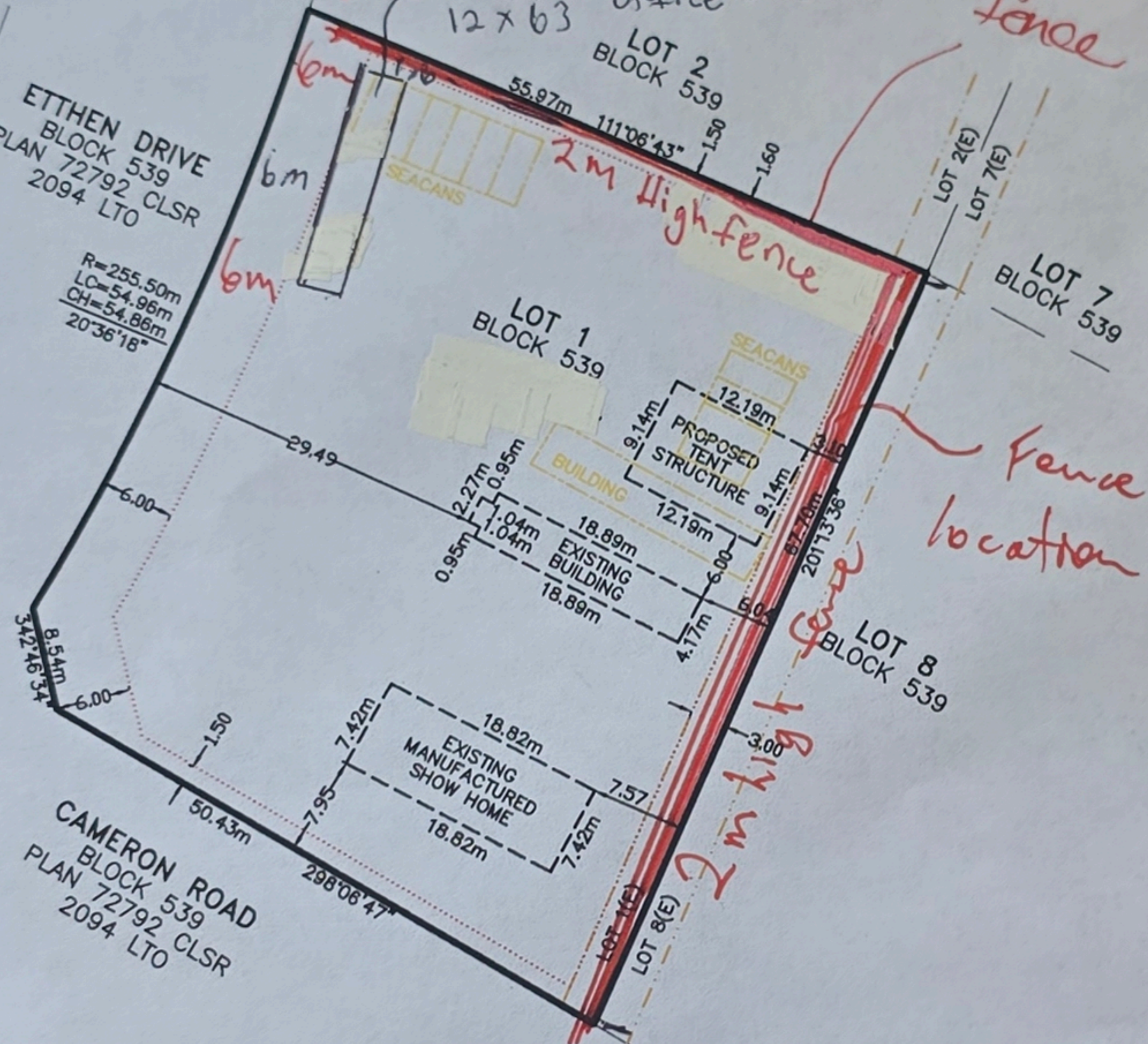


ETTHEN DRIVE
BLOCK 539
PLAN 72792 CLSR
2094 LTO

R=255.50m
LC=54.96m
CH=54.86m
20°36'18"

CAMERON ROAD
BLOCK 539
PLAN 72792 CLSR
2094 LTO

proposed office on skids.
12 x 63



DEVELOPMENT SKETCH

LOT 1 BLOCK 539
PLAN 72792 CLSR, 2094 LTO
#107 ETTHEN DRIVE
YELLOWKNIFE, NT

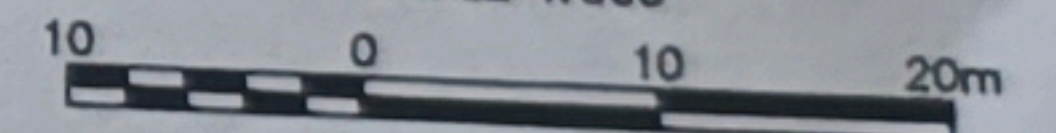
NOTES:

1. DISTANCES AND ELEVATIONS SHOWN ARE EXPRESSED IN METRES
2. HORIZONTAL COORDINATE SYSTEM: NAD83 CSRS(2010.0) UTM ZONE 11
VERTICAL COORDINATE SYSTEM: CGVD2013 (CGG2013a)
3. EXISTING VEGETATION WILL BE PRESERVED.

LEGEND

- LEGAL BOUNDARY.....
- SURROUNDING LOTS.....
- EASEMENTS.....
- SET-BACK LIMIT.....
- PRINCIPAL BUILDING.....

SCALE 1:500



LOT 1, BLOCK 539
ZONE KL - KAM LAKE (BY-LAW 5045)

BY-LAW	ITEM	PERMITTED	PROVIDED	RESULT
12.1.1	1. PURPOSE	COMMERCIAL/LIGHT INDUSTRIAL	PRIMARY	IN COMPLIANCE
12.1.1	2. SITE COVERAGE	MAX 50.0%	11.0%	IN COMPLIANCE
12.1.1	3. HEIGHT OF PRINCIPAL BUILDING	MAX 15.0m		IN COMPLIANCE
12.1.1	4. FRONT YARD	MIN 6.00m	29.49m	IN COMPLIANCE
12.1.1	5. SIDE YARD	MIN 1.50m	1.60m	IN COMPLIANCE
12.1.1	6. REAR YARD	MIN 3.00m	3.10m	IN COMPLIANCE

REV	DATE	COMMENTS

DESIGNED BY: OLLERHEAD & ASSOCIATES LTD.

PERMIT TO PRACTICE
OLLERHEAD AND ASSOCIATES LTD.
Signature: _____
Date: _____
PERMIT NUMBER: P 372
The Association of Professional Engineers
Geologists and Geophysicists of the Northwest Territories



Signature: _____
Date: _____