

Notes



City of Yellowknife
Development Permit # PL-2025-0030
Verified September 16, 2025 (1/8)
Development Officer *A. Wilson/Plng*

Planner's Note: Quality and extent of the landscaping established on this lot at time of development shall be maintained on this lot for the life span of the development.

NO.	ISSUED FOR CONSTRUCTION	DATE	BY	APP'D
1				

Permit/Seal



Client/Project Logo



Client/Project
Larga Kitikmeot

Larga Kitikmeot Travel Lodge

346 Borden Drive, Yellowknife N.T.

Title
SITE PLAN

Project No.
14490369

Scale
1 : 200

Revision
0

Drawing No.

A051

1 SITE PLAN
A051 1 : 200

EXTERIOR ELEVATIONS LEGEND	
TAG	ITEM
A	HORIZONTAL METAL SIDING - BLUE PEARL
B	VERTICAL METAL SIDING - HEMLOCK
C	VERTICAL METAL SIDING - WHITE
D	CORRUGATED SIDING - NAVY BLUE
E	METAL FLASHING ROOF
F	METAL FLASHING TYP
G	METAL FLASHING DOORS AND WINDOWS
H	METAL DOOR
I	MECHANICAL HOOD
J	MECHANICAL LOUIRE
K	MECHANICAL EQUIPMENT
L	ROOF HATCH
M	ELECTRICAL LIGHTS
N	RAIN WATER LEADER
P	RAIN WATER LEADER OPEN-FACED
Q	HORIZONTAL METAL SIDING - BEIGE
R	FIRE PROTECTION EQUIPMENT
S	GUARDRAIL
T	EXTERIOR SIGNAGE

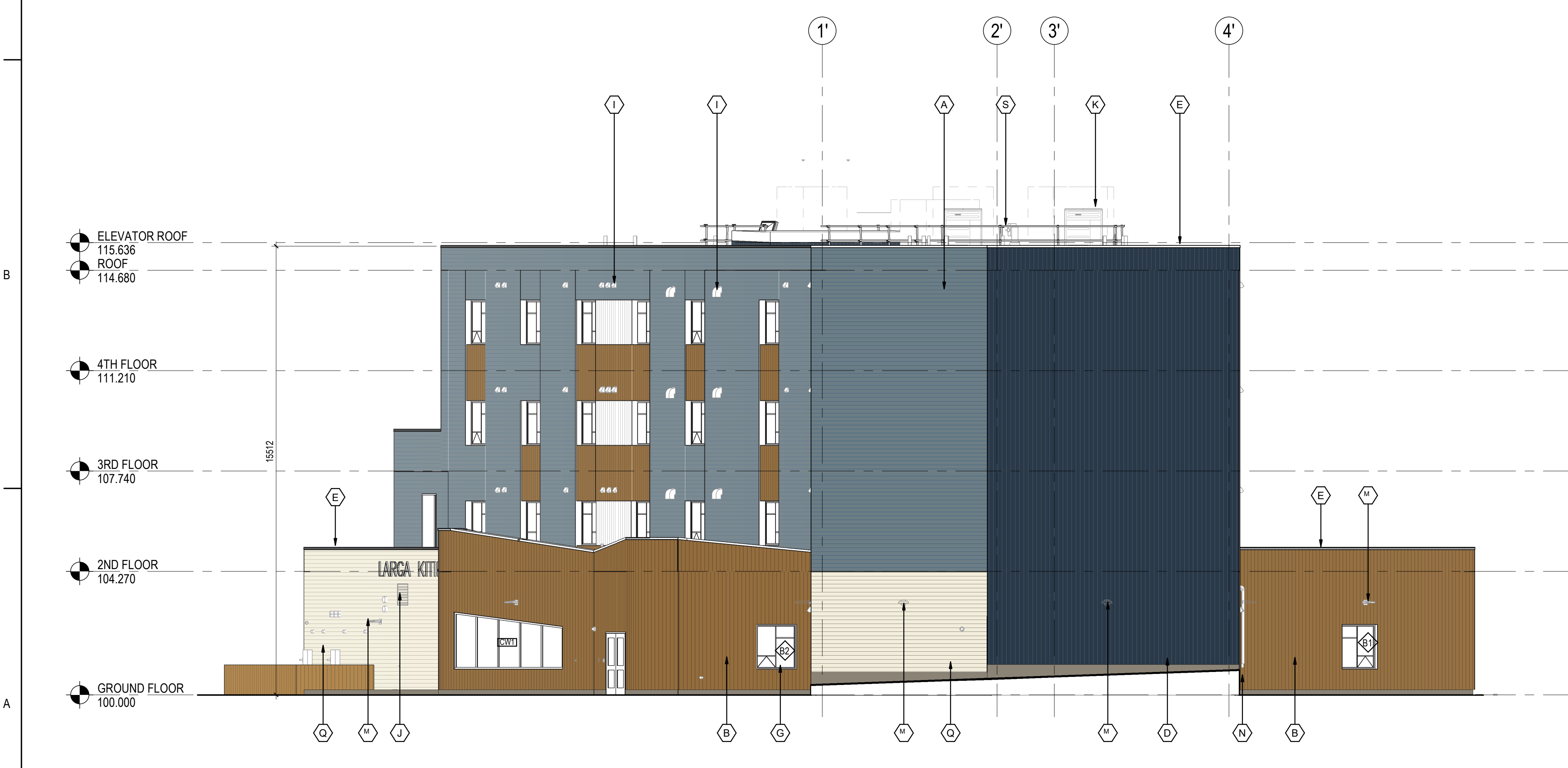
Notes



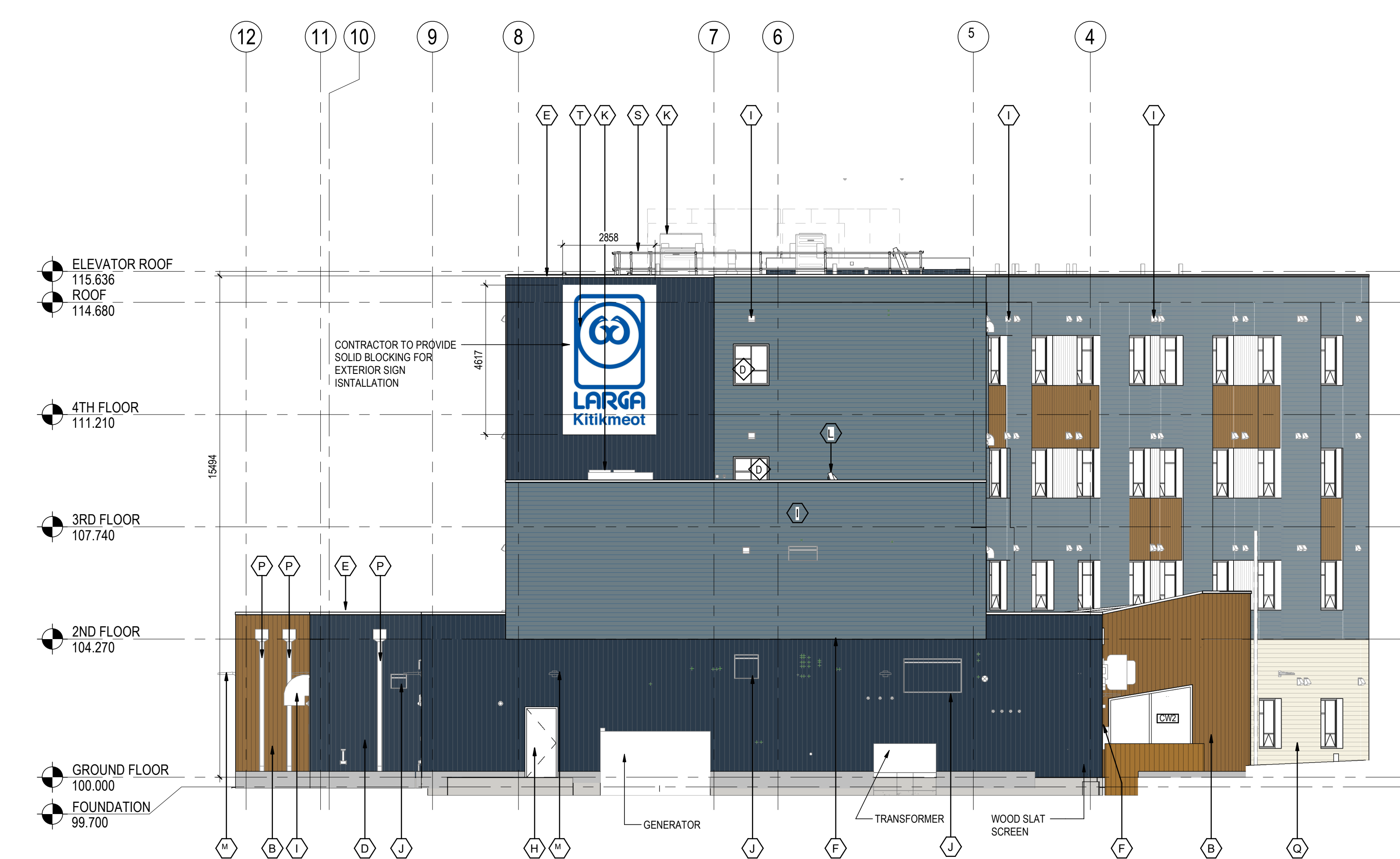
1 EAST ELEVATION
A-201 1:100



2 WEST ELEVATIONS
A-201 1:100



3 NORTH ELEVATION
A-201 1:100



4 SOUTH ELEVATION
A-201 1:100

City of Yellowknife
 Development Permit # PL-2025-0030
 Verified September 16, 2025 (3/8)
 Development Officer *D. Rivlin / Png*

Planner's Note:
 All mechanical equipment, including roof mechanical units, shall be concealed by screening in a manner compatible with the architectural character of the buildings, or concealed by incorporating it within the building roof.

NO.	REVISION	DATE	BY	CHKD.
1	DEVELOPMENT PERMIT REVISION	2025.08.27	JL	WES
2	ISSUED FOR CONSTRUCTION	2025.09.17	JL	WES
3	ISSUED FOR CONSTRUCTION	2025.09.17	JL	WES
4	ISSUED FOR CONSTRUCTION	2025.09.17	JL	WES
5	ISSUED FOR CONSTRUCTION	2025.09.17	JL	WES
6	ISSUED FOR CONSTRUCTION	2025.09.17	JL	WES
7	ISSUED FOR CONSTRUCTION	2025.09.17	JL	WES
8	ISSUED FOR CONSTRUCTION	2025.09.17	JL	WES
9	ISSUED FOR CONSTRUCTION	2025.09.17	JL	WES
10	ISSUED FOR CONSTRUCTION	2025.09.17	JL	WES
11	ISSUED FOR CONSTRUCTION	2025.09.17	JL	WES
12	ISSUED FOR CONSTRUCTION	2025.09.17	JL	WES

Permit/Seal

Client/Project Logo



Client/Project
Larga Kitikmeot Ltd.

LARGA KITIKMEOT TRAVEL LODGE

346 Borden Drive, Yellowknife NT
 Lot 31, Block 512, Plan 4740

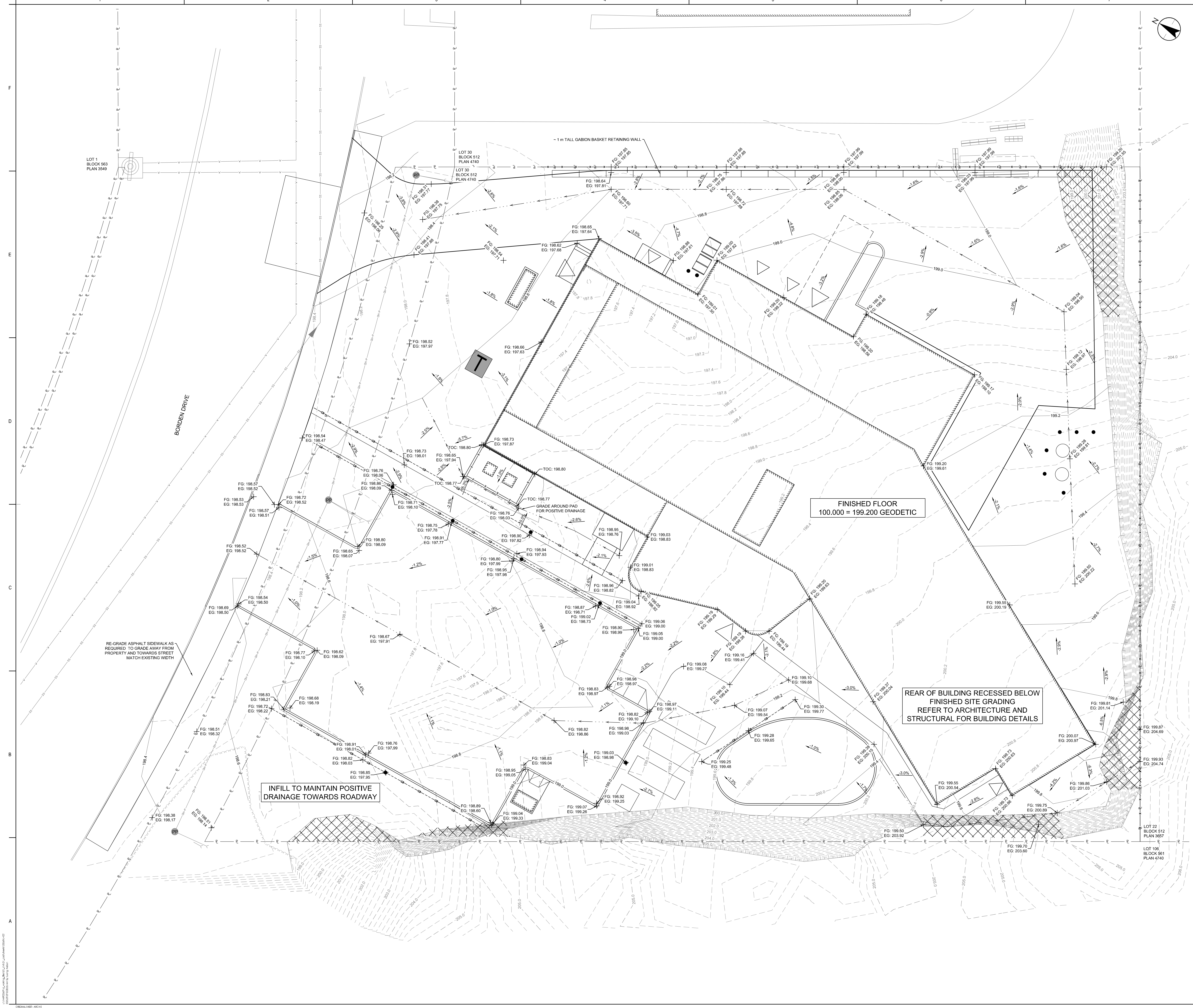
Title
ELEVATIONS

GENERAL SHEET NOTES

- SCALE EXISTING ROCK FACE FULL PERIMETER OF SITE TO ACHIEVE SMOOTH, STABLE FACE, FREE OF LOOSE ROCKS AND OVERHANDS.
- REMOVE LOOSE ROCK WITHIN 1.5 m OF CREST OF EXISTING ROCK FACE FULL PERIMETER OF SITE.

LEGEND

DRAINAGE ARROW	EXISTING	PROPOSED
FLOWLINE		
TOP OF SLOPE		
BOTTOM OF SLOPE		
MAJOR CONTOUR		
MINOR CONTOUR		
SPACE BREAK		



BORDEN DRIVE

RE-GRADE ASPHALT SIDEWALK AS REQUIRED TO GRADE AWAY FROM PROPERTY AND TOWARDS STREET MATCH EXISTING WIDTH

INFILL TO MAINTAIN POSITIVE DRAINAGE TOWARDS ROADWAY

FINISHED FLOOR
100.000 = 199.200 GEODETIC

REAR OF BUILDING RECESSED BELOW FINISHED SITE GRADING REFER TO ARCHITECTURE AND STRUCTURAL FOR BUILDING DETAILS

City of Yellowknife
 Development Permit # PL-2025-0030
 Verified September 16, 2025 (5/8)
 Development Officer *G. Pivonia/Pyng*

Planner's Note:
 Approved surface drainage shall be maintained for the life of the development.

NO.	DESCRIPTION	DATE	BY	CHECKED
1	ISSUED FOR CONSTRUCTION	2025-09-26	CH	MA
2	FOR REVIEW AND APPROVAL	2025-09-26	CH	MA
3	ISSUED FOR CONSTRUCTION	2025-09-26	CH	MA

Permit/Seal
 CHN DGN CNG WVC
 2025-09-26

PERMIT TO PRACTICE
 STANTEC ARCHITECTURE LTD.
 Signature: *[Signature]*
 Date: 2025-09-26

PERMIT NUMBER: P 800
 NTNU Association of Professional Engineers
 and Geoscientists Inc.

Client/Project Logo

Client/Project
LARGA KITIKMEOT LTD.
 LARGA KITIKMEOT TRAVEL LODGE
 346 Borden Drive, Yellowknife, NT

Title
CIVIL GRADING PLAN

Project No. 114903549
 Scale
 Revision 1 Drawing No. **C-102**

Project		Catalog #		Type	
Prepared by		Notes		Date	



McGraw-Edison

GALN Galleon II

Area / Site Luminaire

Product Features



Product Certifications



Interactive Menu

- Ordering Information [page 2](#)
- Mounting Details [page 3](#)
- Optical Distributions [page 5](#)
- Product Specifications [page 5](#)
- Energy and Performance Data [page 6](#)
- Control Options [page 13](#)

Quick Facts

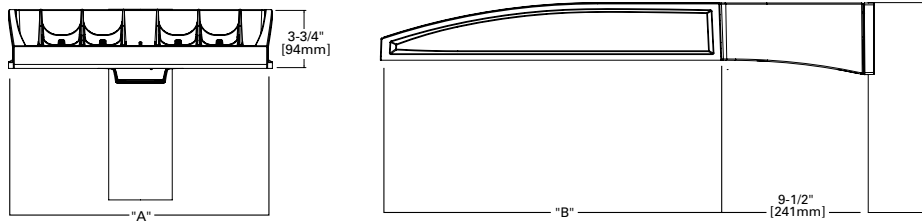
- Lumen packages range from 3,300 - 102,700 (33W - 658W)
- 17 optical distributions
- Efficacy up to 178 LPW

Connected Systems

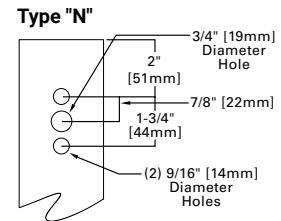
- Wavelinx LITE Wireless
- Wavelinx PRO Wireless
- AirMesh Wireless

Dimensional Details

Standard Pole Mount Arm



Pole Drilling Pattern



Number of Light Squares	Width "A"	Housing Length "B"	Weight with Standard or QM Arm	EPA with Standard or QM Arm
1-4	16"	22"	29 lb	0.95
5-6	22"	22"	39 lb	0.95
7-9	22"	28-1/8"	48 lb	1.1

NOTES: For arm selection requirements and additional line art, see Mounting Details section.

City of Yellowknife
Development Permit # PL-2025-0030
Verified September 16, 2025 (6/8)
Development Officer Di/Vivian/Peng

Project		Catalog #		Type	
Prepared by		Notes		Date	



McGraw-Edison

GWS Galleon II Wall Slim

Wall Mount Luminaire

Product Features



Interactive Menu

- Ordering Information [page 2](#)
- Product Specifications [page 2](#)
- Energy and Performance Data [page 3](#)
- Control Options [page 9](#)

Product Certifications

Quick Facts

- Lumen packages range from 2,700 - 52,000 (20W - 373W)
- 14 optical distributions
- Efficacy up to 160 LPW

Connected Systems

- WaveLinx PRO Wireless
- WaveLinx LITE Wireless

Dimensional Details

1 Square - Housing

2-3 Square - Housing

4-6 Square - Housing

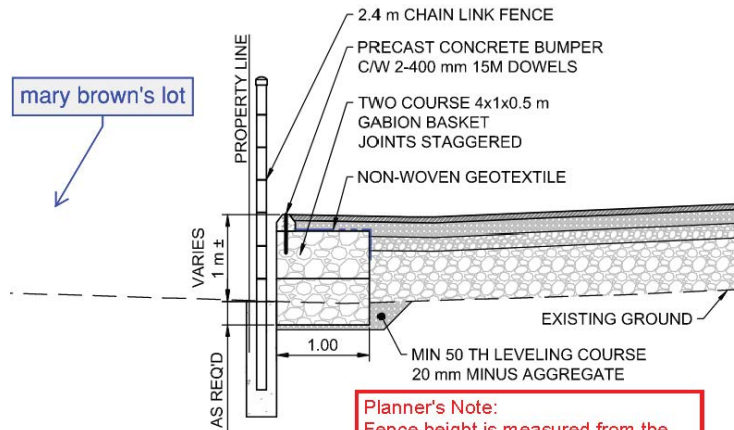
NOTES:
 1. Visit <https://www.designlights.org/search/> to confirm qualification. Not all product variations are DLC qualified.
 2. IDA Certified for 3000K CCT and warmer only.

City of Yellowknife

Development Permit # PL-2025-0030

Verified September 16, 2025 (7/8)

Development Officer Oi (Ovian) Peng



Planner's Note:
Fence height is measured from the finished grade, approx. 1.4 metres.

7

RETAINING WALL/SERVICE AREA SECTION

City of Yellowknife

Development Permit # PL-2025-0030

Verified September 16, 2025 (8/8)

Development Officer Qi (Vivian) Peng