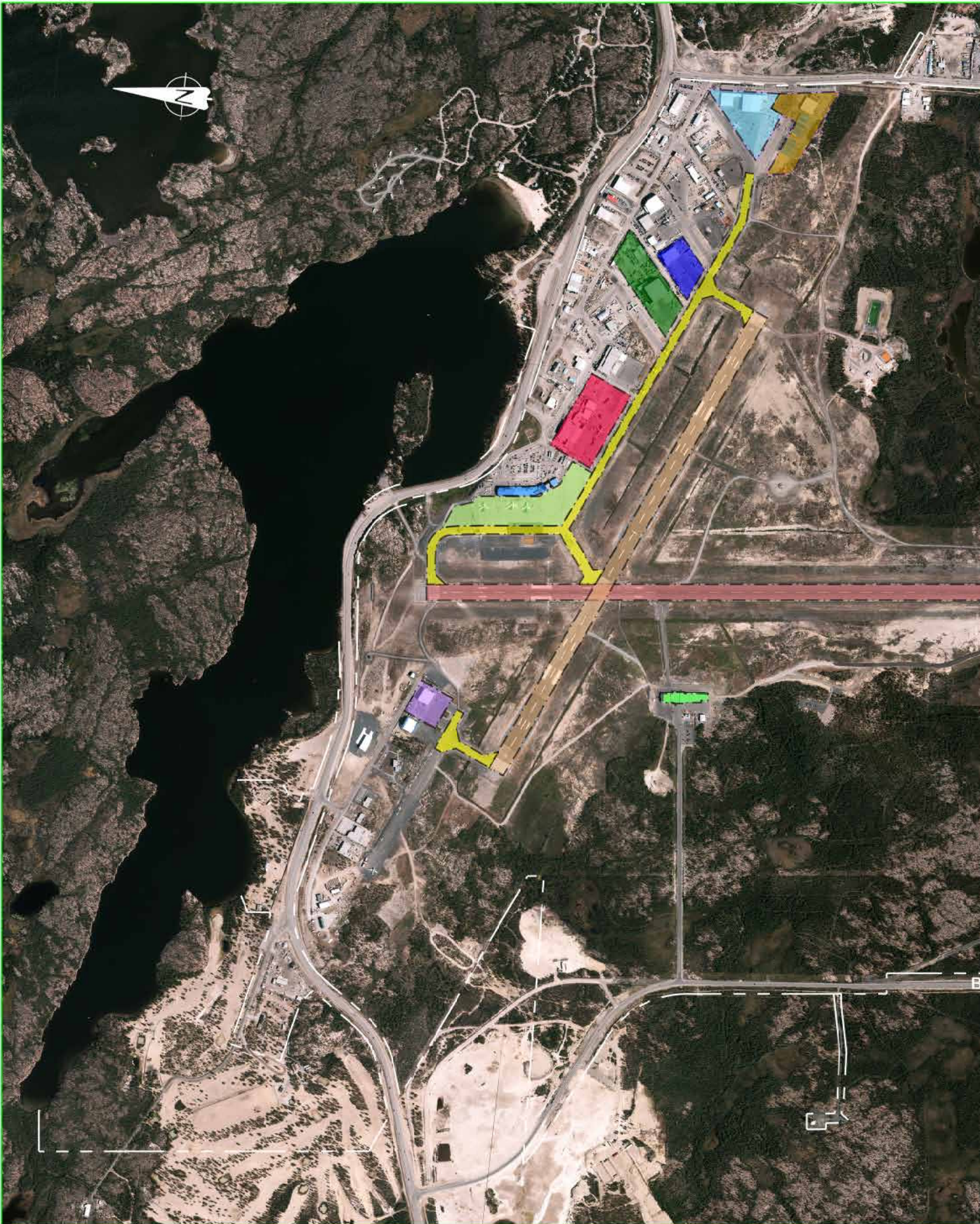
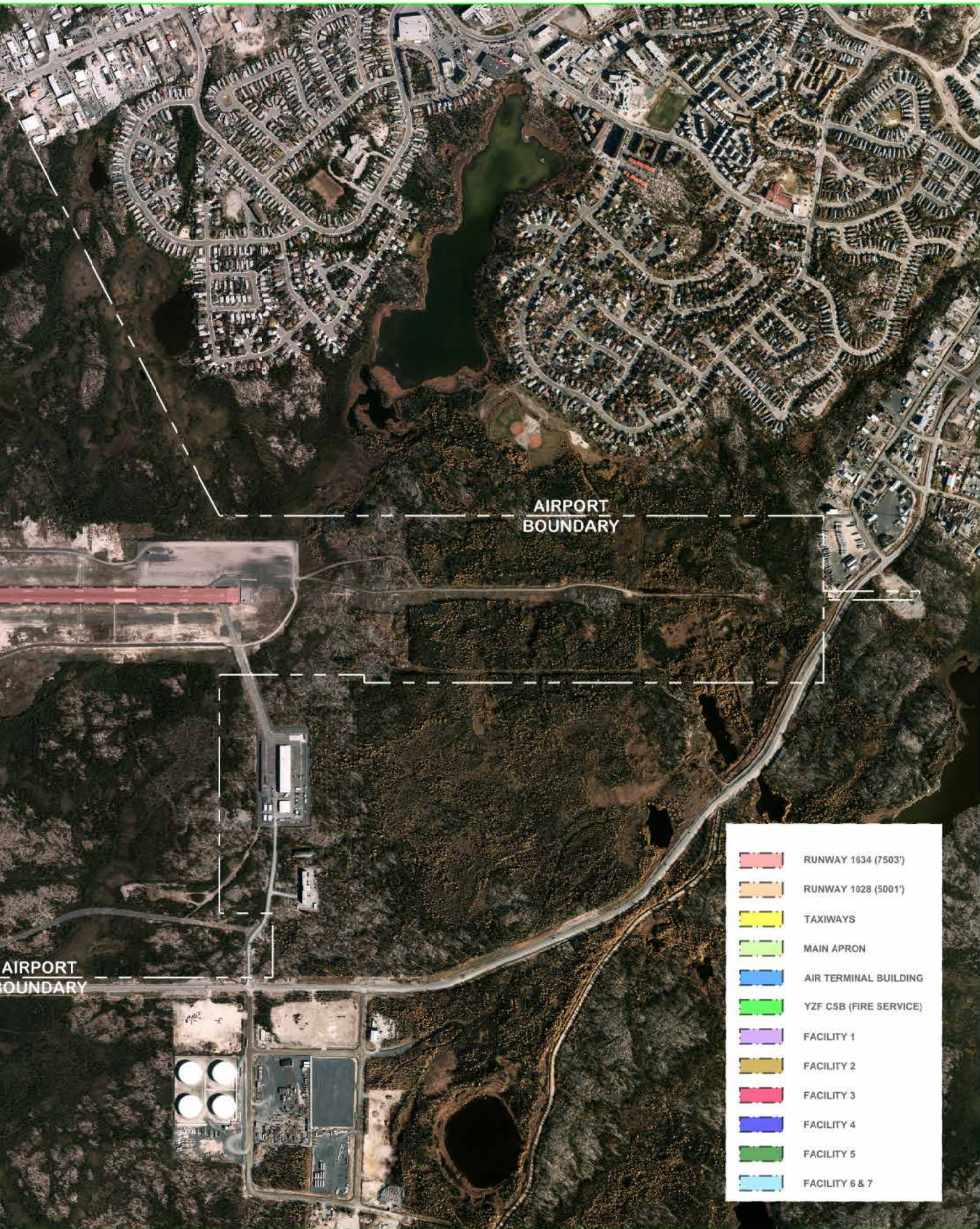




YELLOWKNIFE:

THE COLD STANDARD





AIRPORT
BOUNDARY

AIRPORT
BOUNDARY

-  RUNWAY 1634 (7503')
-  RUNWAY 1028 (5001')
-  TAXIWAYS
-  MAIN APRON
-  AIR TERMINAL BUILDING
-  YZF CSB (FIRE SERVICE)
-  FACILITY 1
-  FACILITY 2
-  FACILITY 3
-  FACILITY 4
-  FACILITY 5
-  FACILITY 6 & 7

Contents

Welcome	03
Yellowknife: The Cold Standard	04
The Cold, Hard Facts	07
YZF: Yellowknife Airport	09
YZF Hangar Facilities	10
Cold-Weather Testing History	14
Testimonials	16
How We Can Help	17
Getting Here	18
What To Do In Yellowknife	20
FAQs	22
Contacts	24

Welcome

MESSAGE FROM THE MINISTER

When it comes to cold-weather testing, Yellowknife Airport (YZF) has a unique advantage.

As the major gateway airport to the Northwest Territories (NWT), conditions at Yellowknife Airport in the winter are cold, clear and dry, and temperatures can dip as low as minus-50 Celsius.

In fact, Yellowknife is one of the coldest cities in all of Canada.

With credentials like these, it should come as no surprise that we are equipped to provide all the services and support that businesses need to conduct their cold-weather testing.

As the Minister of Industry, Tourism and Investment and the Minister of Infrastructure for the Government of the Northwest Territories, I am proud to support companies that are working to create innovative, practical and made-in-the-North solutions for cold-weather challenges, and look forward to seeing these solutions put into practice on a national or global scale.

To support your work at YZF, we have established a Cold-Weather Testing Group. This group is focused on providing resources and assisting aeronautical decision-makers as they decide on a cold-weather testing site.

Through this group's work, we can pledge a wealth of knowledge at your fingertips for cold-weather testing, as well as:

- Runway and airspace
- Apron and ramp space
- Emergency services, including onsite airport firefighting facilities
- Many airport-based businesses who understand the needs of the aerospace industry and have the infrastructure and staff to support all aspects of cold weather testing

Experience the North. Put your equipment to the test at Yellowknife Airport.

Katrina Nokleby
 Minister of Industry, Tourism and Investment
 Minister of Infrastructure

MESSAGE FROM THE MAYOR

Yellowknife is a community that was built on cold. People who live here have gone far beyond developing ingenious ways to build houses and ice roads, run successful businesses, maintain vehicles, and stay warm over eight months of sub-zero temperatures. Yellowknifers have turned this Arctic landscape into something to be celebrated. We have a variety of outdoor events during the winter season: from festivals and races - with both four-legged and two-legged species - kick-sledding, kite-skiing, skijoring, pond hockey tournaments, ice fishing, snowmobiling ... the list goes on and on. Our winters may be long and cold, but our City is vibrant and one of the most welcoming places you will ever visit.

We also know your employees need more than just cold weather, snow and ice to do their work. They need good communication links, easy transportation access to the test site from their home base, quality hotel accommodation and food services, equipment rental shops, repair facilities, and a friendly environment in the host community. Yellowknife, Northwest Territories can supply all those services, amenities and more.

You are guaranteed to experience two things if you travel to Yellowknife during winter: what it feels like to live and play in Canada's coldest City, and the hardy, friendly people who love to work and play outside! It's cold and we love it.

As such, we look forward to sharing our dynamic Northern perspective and climate with you.

Should you have any questions, please do not hesitate to contact me at 867-920-5693 or mayor@yellowknife.ca

Sincerely,

Rebecca Alty,
 Mayor of Yellowknife

Yellowknife: The Cold Standard

THE CAPITAL OF COLD

Yellowknife is about as close as you will get to a natural cold-weather laboratory. By late October, winter has typically settled into the capital city of the Northwest Territories, located 400 kilometres (250 miles) south of the Arctic Circle. It will stay until April. In June, you can still find ice hanging on nearby lakes.

Yellowknife is one cold city. When Environment Canada compared 100 Canadian cities with a population of 10,000 or more, Yellowknife came out as the most extreme. Yellowknife has the coldest winter, the most 'cold days' (when it dips below -20 C), the most 'very

cold days' (when it dips below -30 C) and the longest snow-cover season. During the coldest stretch of winter (from December to February), it's not uncommon for Yellowknife to experience -40 C for days or weeks at a time.

As global temperatures continue to rise, Yellowknife's position as the premier cold-weather testing destination is only strengthened. According to Environment Canada, it will remain reliably, consistently cold during the coldest winter months. This cannot be said of many other current cold-weather destinations.

Blizzards are also rare for Yellowknife, which gives it an advantage over other cold-weather testing destinations. The city doesn't shut down due to the elements, so companies won't have to worry about disruptions to their testing. This is vital when multi-million-dollar testing programs depend on keeping to strict schedules and the ability to move parts, equipment and people with certainty.





Yellowknife is a thriving capital city of 20,000, with an unparalleled ability to get things done in the extreme cold. In fact, we make the cold work for us. We build roads out of ice. Frozen lakes are used as airstrips. We even construct a giant castle and courtyard from snow and ice to celebrate our collective love of winter. Yellowknifers have built a cosmopolitan city in one of the coldest places on the planet.

Cold is in our DNA. There's a pervading institutional knowledge to tap into here. We have an acute understanding of the role cold weather plays on people,

parts and equipment. When there's a rescue mission in Antarctica, they call on flight and engineering crews from Yellowknife. There are generations of cold-weather expertise at your fingertips in Yellowknife and local companies have ramp and hangar space to spare. Yellowknifers are a helpful, hardy bunch who are more than happy to lend a hand.

When you're considering a base for your next cold-weather program, come to where it's consistently cold. Come to a bustling Northern aviation hub where you can access a wealth of cold-weather expertise.

COME TO YELLOWKNIFE, THE COLD STANDARD.



The Cold, Hard Facts

105

Average 'cold days' (dips below -20 C) per winter

-51.2 C


Lowest recorded temperature in Yellowknife history (-60.1 F)

52

Average 'very cold days' (dips below -30 C) per winter

-27.6 C

Average low temperature from December to February





YZF: Yellowknife Airport

THE GATEWAY TO THE NORTH

Yellowknife Airport has everything you need to run a successful cold-weather testing program: from accommodating air traffic controllers who can set aside runway and airspace availability on short notice, to Northern aviation companies with secure hangars and ample apron and ramp space to house your fixed-wing or rotary aircraft and equipment.

Located five minutes from downtown, Yellowknife Airport is open 24/7, 365 days a year to service mines, Northern communities and a thriving capital city. And with more than a dozen regularly scheduled direct daily flights to southern centres like Edmonton, Calgary and Vancouver, you can depend on getting people and parts in and out of Yellowknife without losing sleep.

With on-site firefighting facilities and emergency services located nearby, Yellowknife Airport is also a major Northern Logistics Hub, home to suppliers that understand the specific needs of your industry. As a hub for billion-dollar diamond-mining operations, Yellowknifers are used to working flexible hours.

Yellowknife Airport is homebase for many Northern airlines, with expert staff who possess a deep understanding of how the cold affects equipment and operations. The aviation industry in the North is basically an extended family: companies will go out of their way to help with equipment, support, aircraft or logistics. When you have mere hours to get your aircraft ready and airborne for a cold certification test, airport personnel will ensure you meet that timeframe. If you require a ceiling crane or some last-minute hangar space, all you need to do is ask. If you need to convert to European Voltage or hire a team armed guards to watch over your equipment 24/7, the aviation industry in Yellowknife will be there to handle whatever you throw at them.



YZF Hangar Facilities

YELLOWKNIFE AIRPORT IS HOMEBASE TO MANY NORTHERN AVIATION AND EXPEDITING COMPANIES OPERATIONS, WHICH CAN HOST YOUR NEXT COLD-WEATHER TESTING PROGRAMS.



FACILITY #1.

Hangar Space

Size of Space: 100' x 100'
Door Size: 88'W x 30'H
Power Supply: Single Phase 110VAC, Single Phase 220VAC, and 380/440VAC Three Phase
Power Cart Output Voltage: GPU Fox-cart, 24 VDC
Facility Access/Security: 24/7
Security: Camera & Motion Sensor

Office Space

1st Floor: 2 offices, 2 workshops & lounge (2,200sq. ft.)
2nd Floor: 7 offices (2,400 sq. ft.)
Hangar Access
Apron Access
Apron View

Apron Space

Apron Parking Space
Apron Lighting Fixed
Apron Security: Cameras
Aircraft Support Chase Aircraft: Fixed/Rotary

FACILITY #2

Hangar Space

Size of Space: 10,000 sq ft.
Door Size: 28'W x 20'H roll-up door
Max Tail Height: 18 feet
Ceiling Crane: 3-ton mobile gantry
Power Supply: Single Phase 110VAC, Single Phase 220VAC
Power Cart Output Voltage: 24 VDC
Facility Access/Security: 24/7
Security: Alarm system

Office Space

Three offices available, from small to large
Hangar Access
Apron Access

Apron Space

Apron Parking Space: 8 standard, medium heli pads available
Apron Lighting: Fixed
Apron Security: Locked Gate
Aircraft Support Chase Aircraft: Rotary



FACILITY #3

Hangar Space

Size of Space: 22,960 sq ft.
 Max Tail Height: 64 ft
 Ceiling Crane: 80-tonne mobile crane
 Tooling and Equipment space: Secure
 Power Supply: Single Phase 110VAC, Single Phase 220VAC , 380/440VAC Three Phase
 Power Cart Output Voltage: Various models, 28 Volt & 90 KVA
 Facility Access/Security: 24/7
 Security: No public access, 24-hr video surveillance, electronic security passes

Office Space

2,500 sq ft w/ offices and boardroom.
 Hangar Access
 Apron Access
 Apron View

Apron Space

Apron Parking Space: 187,500 sq ft
 Apron Lighting: Fixed/Portable
 Apron Security: Available
 Aircraft Support Chase Aircraft: Rotary/Fixed Wing

FACILITY #4

Hangar Space

Size of Space: 10,000 sq ft
 Max Tail Height: 34 ft
 Ceiling Crane: 80-tonne mobile crane
 Tooling and Equipment space: Secure
 Power Supply: Single Phase 110VAC, Single Phase 220VAC , 380/440VAC Three Phase
 Power Cart Output Voltage: Various models, 28 Volt & 90 KVA
 Facility Access/Security: 24/7
 Security: No public access, 24-hr video surveillance, electronic security passes

Office Space

2,000 sq ft w/ offices and boardroom.
 Hangar Access
 Apron Access
 Apron View

Apron Space

Apron Parking Space: 187,500 sq ft
 Apron Lighting: Fixed/Portable
 Apron Security: Available
 Aircraft Support Chase Aircraft: Rotary/Fixed Wing



FACILITY #5

Hangar Space

Size of Space: 180' x 180' x 80' High
Door Size: 180/50 feet
Max Tail Height: 47 ft
Ceiling Crane: No
Tooling and Equipment space: A wide range of
Secure and Nonsecure Storage
Lifts/Platforms Height: Various Equipment
Temperature Controlled Type: Boiler
Fire Suppression/Control Details: Standard Building
Code Requirements
Power Supply: 110VAC Single Phase, 220VAC Single
Phase, 380/440VAC Three Phase
Power Cart Output Voltage: Plug Spec. Make/
Model, Mulatbale Power Carts Aviable
Nitrogen Bottle or Cart
Spec. Port Fitting Spec.: On Request
Compressed Air Spec.: On Request
Internet/WiFi Access Details: On Request
Staff Break Room Details: On Request
Additional Hangar Details: On Request
24/7 Access
Hangar Security: On Request

Office Space

Furnishings: On Request
Internet/WiFi Access Details: On Request
Hangar Access, Apron Access, Apron View
24/7 Access
Office Security: On Request
Kitchen Details: On Request
Washrooms Details: On Request

Apron Space

Parking Space Available Dimensions: On Request
Power Stands Details: On Request
Apron Lighting Fixed / Portable: On Request
Apron Security: On Request
Ground Support Equipment:
Ground Power Unit, Output Voltage, Plug Spec,
Number available: On Request
Heat Cart, Output, Model, Number Available: On
Request
Air start Unit, Output, Make/Model: On Request
Aircraft Tug, Towing Specs: On Request
Potable Water: On Request
Lavatory Cart: On Request
Portable Stairs, Maximum Height: On Request
Other GSE: On Request
Aircraft Support: Chase Aircraft, Fixed/Rotary,
Details: On Request



FACILITY #6&7

Hangar Space

Size of Space: 10,000 sq ft
 Max Tail Height: 34 ft
 Ceiling Crane: 80-tonne mobile crane
 Tooling and Equipment space: Secure
 Power Supply: Single Phase 110VAC, Single Phase 220VAC , 380/440VAC Three Phase
 Power Cart Output Voltage: Various models, 28 Volt & 90 KVA
 Facility Access/Security: 24/7
 Security: No public access, 24-hr video surveillance, electronic security passes

Office Space

2,000 sq ft w/ offices and boardroom.
 Hangar Access
 Apron Access
 Apron View

Apron Space

Apron Parking Space: 187,500 sq ft
 Apron Lighting: Fixed/Portable
 Apron Security: Available
 Aircraft Support Chase Aircraft: Rotary/Fixed Wing

Cold-Weather Testing History

TRIED AND TESTED

Yellowknife has a sustained and successful history of hosting cold-weather testing programs. Back in the early 1990s, caravans of Porsches navigated the city's streets during the coldest days of winter. Over the years, aviation companies have certified their aircraft in Yellowknife's frigid temperatures. Bombardier Aerospace, Raytheon, Airbus, BMW and Gulfstream Aerospace have all tested equipment and machinery in Yellowknife. In 2019, Texas-based Bell Helicopters dispatched more than 40 employees and two of its large, next-generation 525 Relentless helicopters for a two-month testing program.

Leading companies have come to Yellowknife for cold-weather testing.

- Beechcraft: Premier Jet
- Robinson: R66
- Honeywell:
Boeing 757 engine
- Bombardier: C Series
- Airbus Helicopters: H160
- Eurocopter (now Airbus): EC175
- Sikorsky: CH-148815
- Bell: 525 Relentless
- Porsche: 911
- GE



**“WE GOT THE
-40 C WE WERE
LOOKING FOR.”**

Pat Lindauer
Chief Rotary Wing Test Pilot
Bell Helicopters

Testimonials



“Yellowknife Airport and local aviation companies were very accommodating. We were able to work with control towers to basically shut down a runway while we were doing low-altitude work over the runway. They diverted all of the other traffic to the other runway so we could do our work and they coordinated with us so if they were landing something or taking off something, we still got half the runway to work with. Fuel was very responsive. We were able to get out into the working area really rapidly to do our tests, so they were very accommodating in supporting us. And we got the -40 C we were looking for.”

PAT LINDAUER

Chief Rotary Wing Test Pilot at Bell Helicopters



“We didn’t have any trouble with the control tower or working within the airspace. There’s plenty of nice restaurants in town, so all of that worked out pretty well. If somebody said, ‘Hey, it’s -40 C in Yellowknife, would you recommend going back?’ I’d say, ‘Well sure, we would go back.’”

DAVE LEWANDOWSKI

Chief Test Pilot at Bombardier Flight Test Center



“Why Yellowknife? Because it’s quite a big city. There is a hospital and if there was a problem for somebody on our team, it was easy to solve. The installation and hangar facilities were perfect. When we had specific requests, we went through Summit and each time people found out solutions if we had problems. It was perfect. At the beginning, we were thinking perhaps we will have some problems with the huge fixed-wing traffic on the platform, but we did our [cold certification] performance tests early in the morning when there was no wind and it was well managed. I cross-country ski and once I went by cross-country ski from my hotel to the office. Also, we have beautiful pictures and movies of the Northern Lights.”

NICOLAS CERTAIN

Flight Test Engineer at Airbus Helicopters

How we can help

“My personal experience is from the Aircraft Maintenance portion of our industry, of which I have been working in for almost nineteen years. GSH has been serving the North since 1984, in a multitude of different scopes of work.

We commonly assist clients with the installation of any of their certified equipment. Especially if the equipment is of a new application and needs to be adjusted to work correctly and safely. All while following the strict restraints set forth by the equipment, and aircraft, manufacturers.

We recently had a customer wanting to take water samples near Inuvik with a hoist equipped BK117, while hovering above the water. It was a new platform for this type of sampling, and we had one of our fine engineers spend many hours designing and fabricating fixtures, housings, and work aids, to ensure the sampling process went smoothly and safely. The process went very well, and the customer was very pleased with the results.

GREAT SLAVE HELICOPTERS

“We provide on-call, 24-hour support for customer aircraft movements at no extra charge. At Summit Air, we listen to what the client needs to accomplish and then we tailor an efficient and cost-effective solution to meet or surpass the client's goals.”

SUMMIT AIR

“For the last 50 years, Buffalo Airways has operated in the Northwest Territories, we are the experts in working in the cold!

We have a big hangar and everything you need to survive cold weather testing.”

BUFFALO AIRWAYS

“We have hosted a number of rotary and fixed wing CWT programs over the years. In recent years, the specific requests from testing organizations have escalated as the aviation corporate landscape has become increasingly competitive. These include requiring background checks for our staff, and even having armed guards surrounding the aircraft 24/7. There have also been a couple occasions where we have pulled the Gooseneck semi into the hangar to then unload/load the helicopter. In aviation, you just figure out a way. Just ask and we'll make it happen.”

DIAMOND AIR

“At Det'on Cho Logistics we have the experience and resources to put your cold weather testing program together. Our organization has been supporting cold weather testing operations in Yellowknife for a decade. Our team of Logistical professionals will be with you every step of the way to ensure everything from pre to post operational needs are met and taken care of.

At Det'on Logistics we pride ourselves on being Yellowknife's premier one stop logistics Solution. We can provide answers to any questions you have as to why you should choose Yellowknife as Cold your weather testing destination.

Our resume speaks for itself when it comes to cold weather testing operations at the Yellowknife airport. You tell us what you need, and we will provide options on how we will get it done for you. We are flexible, adaptable and focused on customer service. We want to help you make Yellowknife the home of your next cold weather testing operation!”

DET'ON CHO LOGISTICS



Getting Here

Although Yellowknife is located in Canada's subarctic, just south of the Arctic Circle, it's really far closer than you think. That's because there are more than a dozen direct daily flights between Yellowknife and southern centres like Calgary, Edmonton and Vancouver, meaning it's a quick connection from major aircraft assembly and manufacturing locations like Seattle and Montreal.

Yellowknife is also connected to the rest of the world year-round by road. Companies can truck over-sized loads or awkward equipment up instead of having to fly such items in. In fact, in 2019, Bell Helicopters transported two of its next-generation helicopters to Yellowknife in tractor trailers.



FOLK ON THE ROCKS

LONG LAKE

PROSPECTORS' TRAIL

INGRAHAM TRAIL

NWT HIGHWAY No. 3

NWT HIGHWAY No. 4

YELLOWKNIFE SKI CLUB

YELLOWKNIFE AIRPORT ✈️

JACKFISH LAKE

BACK BAY LOOKOUT TRAIL

NIVEN LAKE TRAIL

NIVEN LAKE

OLD AIRPORT ROAD

MCMAHON FRAME LAKE TRAIL

FRAME LAKE

DOWNTOWN 🏠

BORDEN DRIVE

RANGE LAKE

RANGE LAKE TRAIL

OLD AIRPORT ROAD

GITZEL STREET

FRANKLIN AVENUE (50th AVE.)

48th STREET

49th STREET

50th STREET

51st STREET

52nd STREET

53rd STREET

54th STREET

52nd AVENUE

FORREST DRIVE

TAYLOR ROAD

TIN CAN HILL TRAIL

60th ROAD

RANGE LAKE ROAD

KAMI LAKE ROAD

FRANKLIN AVENUE (50th AVE.)

What to do in Yellowknife

EXPLORING THE COLD CITY

Although cold-weather crews are busy with around-the-clock testing, there's a lot to do in Yellowknife to relax or stay active. Within walking distance from many of Yellowknife's comfortable and quiet hotels, visitors can dive into a surprisingly diverse culinary scene that includes one of Canada's best Ethiopian restaurants, along with Korean, sushi, Vietnamese, East African, Filipino and Chinese fare. Yellowknife has fine-dining options, steakhouses, upscale pubs and fast food. Stop in at the Woodyard Pub—the only local brewery in the Northwest Territories—for a shack burger and sample a wide selection of NWT Brewing Co.'s craft beers. Unwind with a pint of Guinness at the legendary Black Knight pub downtown or tackle a heaping plate of fish, caught that same day from Great Slave Lake, at the acclaimed Bullock's Bistro.

Getting out and exploring the city on a day off is easy. Yellowknife is an extremely walkable city, with many amenities a short distance from downtown. And the wilderness is just as close. You can rent winter gear from a number of Yellowknife companies and then book a dog-mushing tour through pristine subarctic landscapes. Or hop on a snow machine to do some ice-fishing—and find out for yourself that the tales of monster pike are not exaggerated. If you'd rather change your

perspective, take off from the ice on Yellowknife Bay for a floatplane flightseeing tour of the city and region. Or rent some skis or snowshoes and explore the houseboat community, the city's most eclectic neighbourhood.


If that's not your speed, take a tour of the Buffalo Airways hangar to marvel at the WWII-era aircraft that still shuttle people and goods around the territory. (That is, if you haven't already met the gang during testing.) The Prince of Wales Northern Heritage Centre is a great place to learn about the history of the North, with permanent displays of the area's rich aviation history—including a propeller fashioned from scrap wood, which helped save the first flight into the NWT.

Yellowknife also has many outdoor and indoor skating rinks, a curling club, a pool, a soccer fieldhouse with a running track and climbing wall, along with a number of gyms and yoga studios. Book a massage after a long day. Or drop in for some noon-hour hockey at the rink. Yellowknife has all the conveniences of a big city in one small town.

HOW TO SPEND A DAY OFF...

- Rent skis, a fatbike or snowshoes and explore Yellowknife.
- Grab a pair of skates and play some houseboat pond hockey.
- Take off from Yellowknife Bay for a flightseeing tour of the city and the region in an iconic bush plane.
- Marvel at the Northern Lights.
- Be a dog-musher for a day on a dogsled tour outside the city.
- Take a snowmobile out for a rip.
- Head out on an ice-fishing adventure and catch your dinner.

For more information on tour packages and rentals, visit extraordinaryyk.ca.



Yellowknife is a global Northern Lights-viewing destination, with tens of thousands of tourists travelling here from all over the world each year. Reliably calm, cloud-free skies provide the stage for nightly cosmic lightshows that will dazzle you, even from the heart of the city's downtown.

FAQs: YZF Airport

What are the runway lengths at Yellowknife Airport?

Yellowknife Airport has two paved runways. Runway 16-34 is 7,503 feet (2,287metres) in length and Runway 10-28 is 5,001 feet (1524 metres) in length. Air traffic controllers can work with you to accommodate your tight flight-test timelines.

How much apron space is there at Yellowknife Airport?

There are up to ten designated aircraft parking locations on the apron. Gates 2-10 are used for scheduled passenger aircraft only and Gate 1 is used to accommodate unscheduled and charter flights, along with military aircraft.

How accessible is fuel at Yellowknife Airport?

Aviation fuel (100LL Avgas, Jet A-1 turbine, F34 turbine fuel—military designation) and all types of oil are available from Shell Canada (Det'on Cho Logistics) and World Fuel Service Canada. These airport-based fuel suppliers are flexible enough to work with any schedule.

What amenities does Yellowknife Airport have?

Yellowknife Airport is a full-service terminal building, featuring CUTE check-in, along with CATSA+ pre-board and hold baggage screening. Yellowknife Airport also has a gift shop stocked with local art and products, food and beverage concessions and vending machines.

Does Yellowknife Airport have emergency response capabilities?

Yellowknife Airport is a CAT6 Airport Rescue and Fire Firefighting (raised to Cat 7 for special ops) institution. Airport firefighting and training facilities are located on site.

When does airfield maintenance take place?

Yellowknife Airport has on-site airfield maintenance, seven days a week from 0400 to 0100 hours.

Can I rent a car while in Yellowknife?

There are 3 car rental companies to rent vehicles from directly at YZF. National Car Rental, Hertz Rent a Car & Budget Rent a Car.

FAQs: Yellowknife

Is there ample hotel capacity to support our team?

Yes. We can work with your group to block multiple hotel rooms in the same hotel so your team of professionals can be situated together. Transportation to and from the airport can also be arranged.

Are there medical services in Yellowknife?

All medical services are provided via the Government of the Northwest Territories. Yellowknife has a new 100-single bed regional hospital with emergency services and various specialists. The city also has two medical clinics, with walk-in availability.

What other services are located in Yellowknife?

Yellowknife has a wide range of support services, from chiropractors, opticians, registered massage therapists and physiotherapists.

Does Yellowknife have cell phone and internet service?

Yes. Yellowknife has modern LTE 4G service and high-speed wireless internet. Four companies offer cell service to Yellowknife, which is available throughout the city, but ends roughly 10 kilometres outside Yellowknife.

Historically, how is the U.S.-Canada exchange rate?

The Canadian exchange rate works in favour of American and European companies testing in Yellowknife. For instance, \$1USD has not fallen below \$1.23CDN in the last four years. (It has hovered between \$1.42CDN and \$1.61CDN for the past two years.) Companies really get more bang for their buck testing in Yellowknife.

Where can I rent winter gear?

If you're coming here to cold-weather test, you bet it's going to be cold. To stay warm, be sure to dress in layers. You can also rent winter clothing like boots and parkas from My Backyard Tours or Narwal Northern Adventures .

Contacts



RANDY STRAKER

Yellowknife Airport

Regional Airport Manager

867-797-9091 ext. 31235

YZF_ColdWeatherTesting@gov.nt.ca



Yellowknife Airport
L'aéroport de Yellowknife

Where the North Connects | Le rendez-vous du Nord