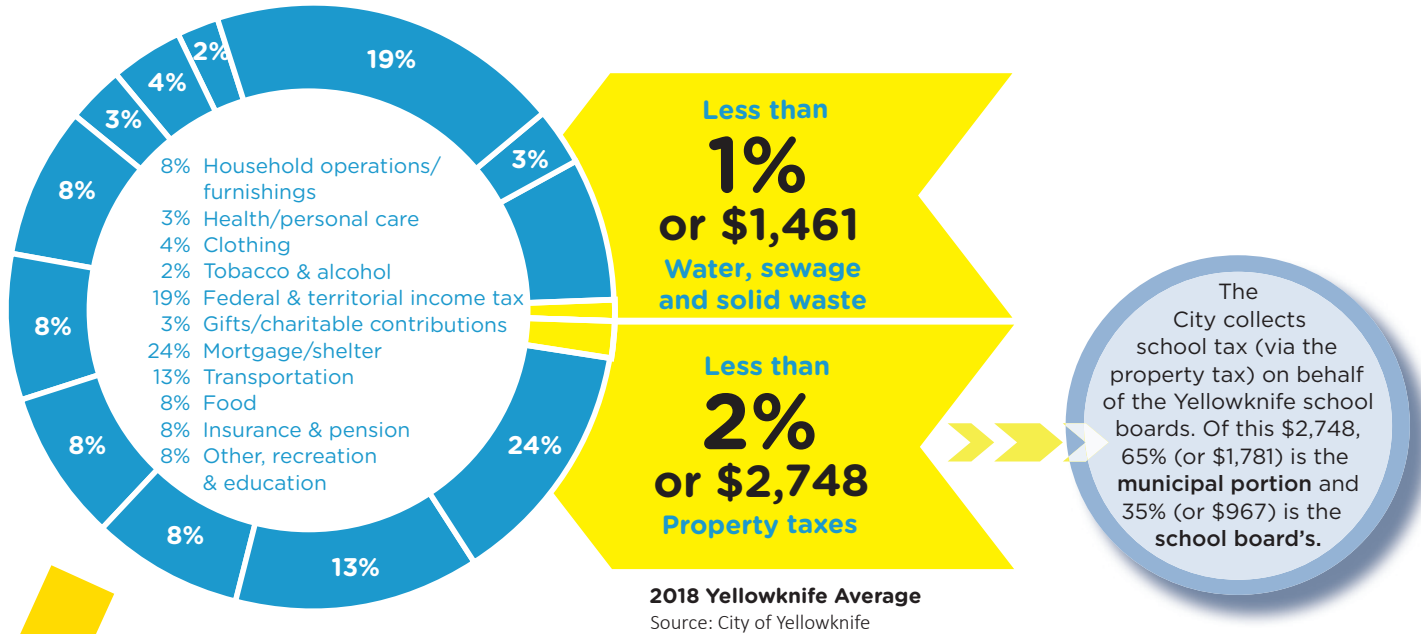


# 2019 Our Yellowknife Budget



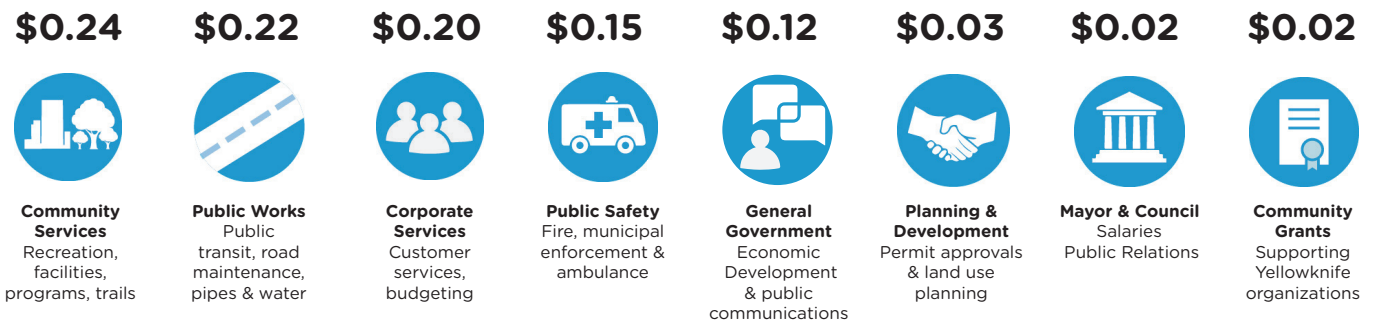
## WHERE DOES YOUR MONEY GO?



In 2018, user fees for water, sewer and solid waste represent 1% of your household expenses, and property tax represents 2 %.

(based on Statistics Canada's Average Expenditures for Yellowknife Households for 2015 - Statistics Canada, Data Table 11-10-0233-01)

## Your Tax Dollar Breakdown (2018)



For more details on the City Of Yellowknife's 2019 budget, please visit:

[www.yellowknife.ca/budget](http://www.yellowknife.ca/budget)

