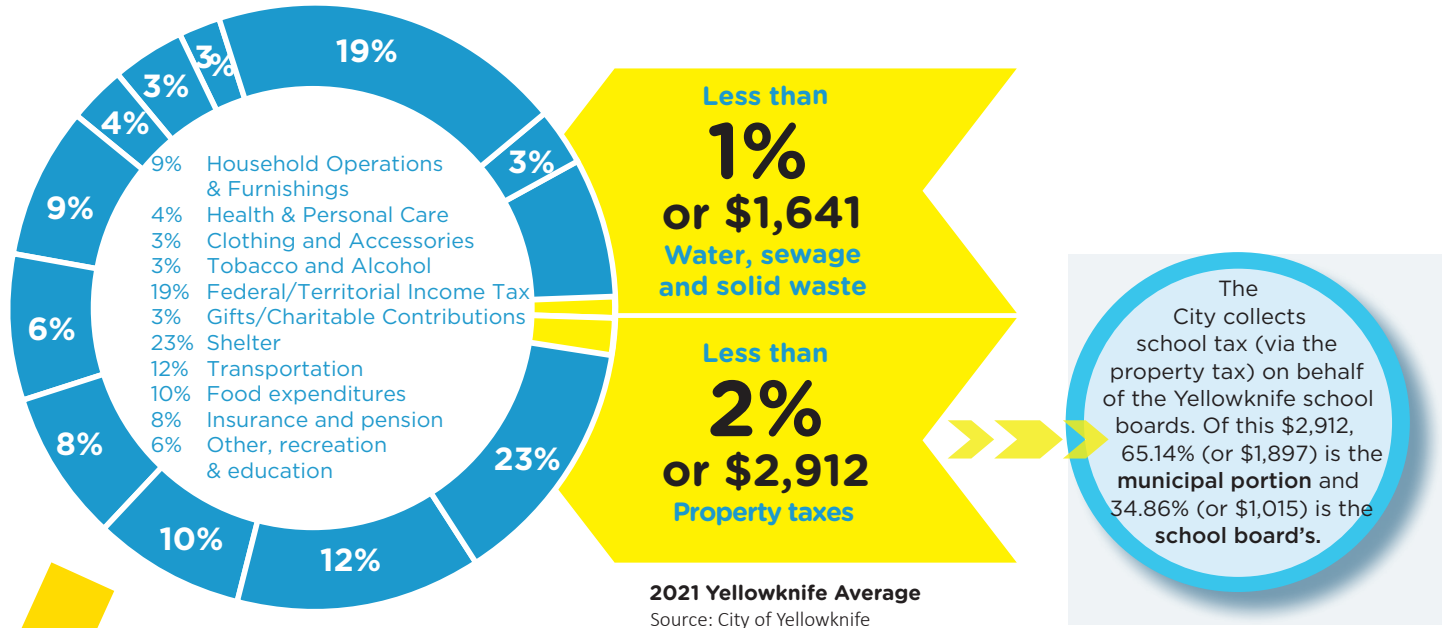


2022 Our Yellowknife Budget



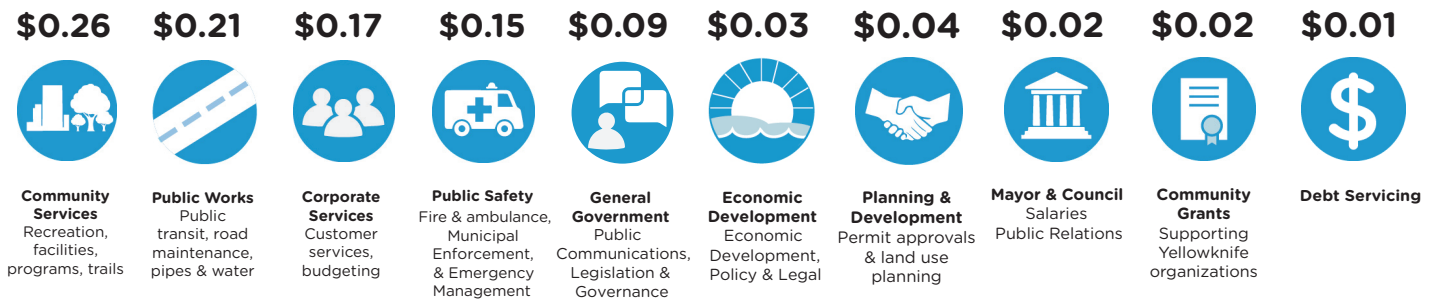
WHERE DOES YOUR MONEY GO?



In 2021, user fees for water, sewer and solid waste represent 1% of your household expenses, and property tax represents 2 %.

(based on Statistics Canada's Average Expenditures for Yellowknife Households for 2019 - Statistics Canada, Data Tables 11-10-0233-01 & 11-10-0222-01)

Your Tax Dollar Breakdown (2021)



For more details on the City Of Yellowknife's 2021 budget, visit:

www.yellowknife.ca/budget

