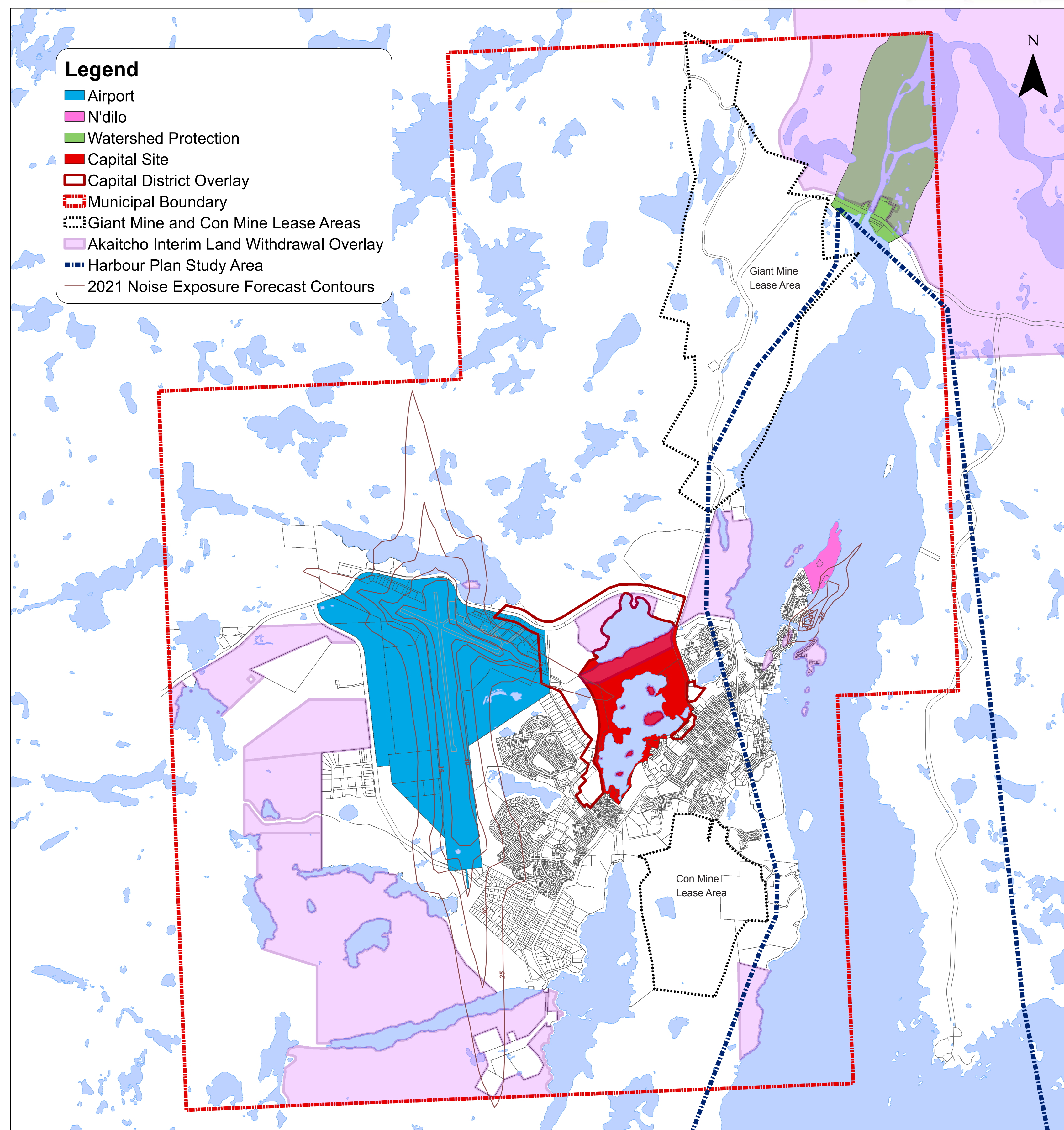




# REGIONAL COORDINATION

## YELLOWKNIFE GENERAL PLAN UPDATE 2011



**Regional Coordination Issues:** Policies in the General Plan address issues and projects that will require ongoing coordination with external stakeholders.

### Yellowknives Dene First Nation

- The City will foster open communication with the Yellowknives Dene First Nation on land use issues, including the municipal boundary, harbour planning and the Land Withdrawal Process.
- 1,034 hectares of land within the municipal boundary are subject to the Akaitcho Interim Land Withdrawal. These lands are shown on the Land Use Map (Map 1) of the General Plan. No new interests in these lands can be created until the process is resolved.

### Government of the Northwest Territories

- Municipal boundary - No new lands are needed within the municipal boundary for general community development. However, GNWT policy states that boundaries should, where possible, include land for the community water supply, waste disposal areas, and supply of granular materials (e.g. gravel). Since these facilities lie outside the municipal boundary, the City may consider applying to the GNWT to expand the municipal boundary.
- Capital Site & Capital District - These lands require a new development scheme, which will define a clear vision for the future of this area.
- Airport - The City must work with the GNWT and the federal government to make sure that development around the airport does not jeopardize airport safety. Residential uses and other sensitive uses should also be protected from airport noise.

### Harbour Planning

- A Harbour Plan is currently underway. The Plan area extends from the mouth of the Yellowknife River to the southern border of the City. The Harbour Plan will address environmental conservation, transportation, tourism and recreation commercial development, floating homes and public waterfront access.
- The Harbour Planning Committee will recommend policies to the City and the Yellowknives Dene First Nation on how the harbour will change and be managed over time.

### Giant Mine/Con Mine

- Yellowknife's old mining operations created waste disposal sites within their leased lands which are identified on Map 1.
- General Plan policies recognize the jurisdiction of the GNWT and the Government of Canada in regulating the management of mine wastes, land reclamation procedures and future land uses in the vicinity of mine sites.