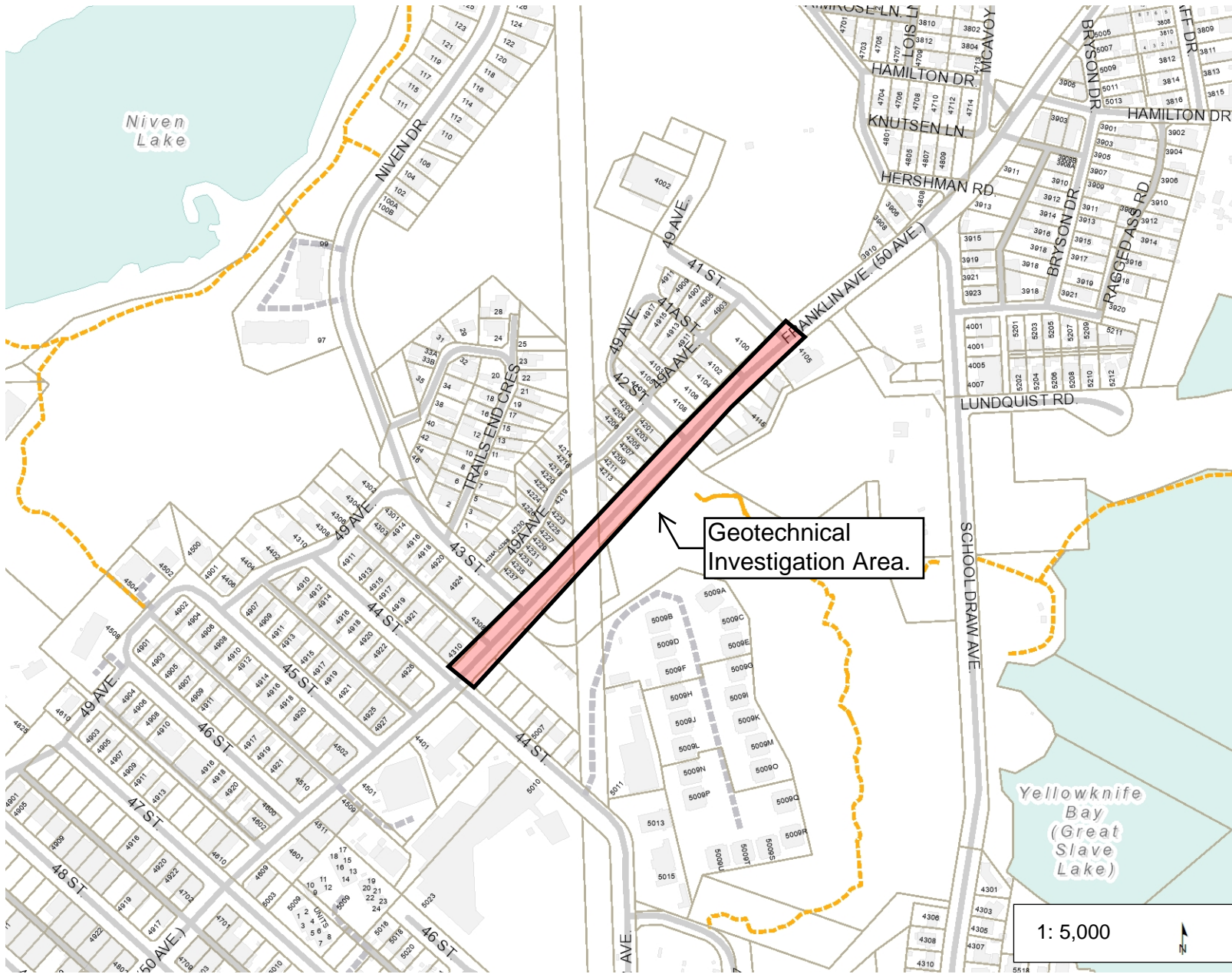




# Franklin Avenue - 44th Street to 41 Street Geotechnical Investigation



Geotechnical Investigation Area.

- Legend**
- Undeveloped Area
  - Buildings
  - Trails
  - Parcels
  - Streets**
    - Road
    - Private Laneway
  - Municipal Boundary
  - Waterbodies
  - One Way Markers

1: 5,000

0.3 0 0.13 0.3 Kilometers

NAD\_1983\_UTM\_Zone\_11N  
© City of Yellowknife

This map is a user generated static output from an Internet mapping site and is for reference only. Data layers that appear on this map may or may not be accurate, current, or otherwise reliable.  
**THIS MAP IS NOT TO BE USED FOR NAVIGATION**

**Notes**