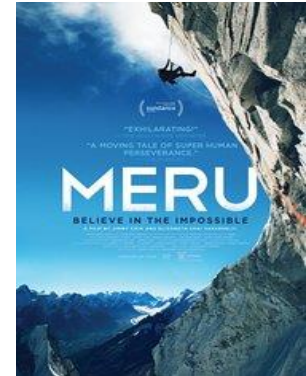


January 8, 2016

*Spotlight on Film:*

*Meru: Believe in the Impossible; a film by Jimmy Chin and Elizabeth Chai*

Fans of armchair adventure and stunning mountain visuals will be captivated by this documentary film which won the 2015 audience award at the Sundance Film Festival. Shark's Fin on Meru in northern India had never been summited before and has been described by mountaineer and author Jon Krakauer as the "anti-Everest" as it has seen more attempts and more failures than any peak in the Himalaya".



A real-life drama in three acts, *Meru* charts two attempts to summit Meru by two of the world's strongest climbers, Conrad Anker and Jimmy Chin, together with a comparative newcomer Renan Ozturk. Forced to turn back in 2008, they returned to the mountain in 2011 for a harrowing but ultimately successful expedition. The circumstances of their return underline their extreme obsession – they were unstoppable even after severe injuries prior to setting out. (Chin was nearly killed in an avalanche and Ozturk sustained a traumatic brain injury while backcountry skiing.)

*Meru* is more than a technical film about the physical challenges inherent in this seemingly impossible expedition; it also explores the psychological toll of their mission (many will consider the climbers self-destructive) as well as the nature of leadership. Breathtaking scenery coupled with heart stopping moments ensures that this film will appeal to a mainstream audience. This mountain peak is known in Buddhist legend as the "center of the universe" and Yellowknife Public Library patrons can enjoy "visiting" from the comfort of their own armchairs! A fine warm-up act for the upcoming *Banff Mountain Film Festival!*

*Meru* is available for checkout from Yellowknife Public Library's *Armchair Adventures* display.

- *Review prepared by Deborah Bruser.*