

## What Can You Do?

### Properly Dispose of Wastes

Take your household wastes to the appropriate place for disposal. Household Hazardous Waste collection days are organized each year and allow residents to bring chemicals and other household products to a designated area for proper disposal. Put garbage in proper containers. Don't litter.



### Stoop & Scoop

Please clean up after your pets. Pet waste can contain bacteria, parasites and viruses which are a health risk. Nutrients in pet waste can encourage weed and algae growth which affects water quality. Pet waste can be disposed of at the Yellowknife Solid Waste Facility at no cost.



### Report Illegal Dumping & Spills

If you see something being dumped into the stormwater collection system, call the NWT Spill Line. The line is manned 24 hours a day, 7 days a week.

**NWT 24 Hour  
Spill Report Line  
(867) 920-8130**



For more information please contact

**City of Yellowknife**

**Public Works Department**

PO Box 580

4807-52 Street

Yellowknife, NT

X1A 2N4

867-920-5653

[www.yellowknife.ca](http://www.yellowknife.ca)



**City of  
Yellowknife**

# Stormwater Information

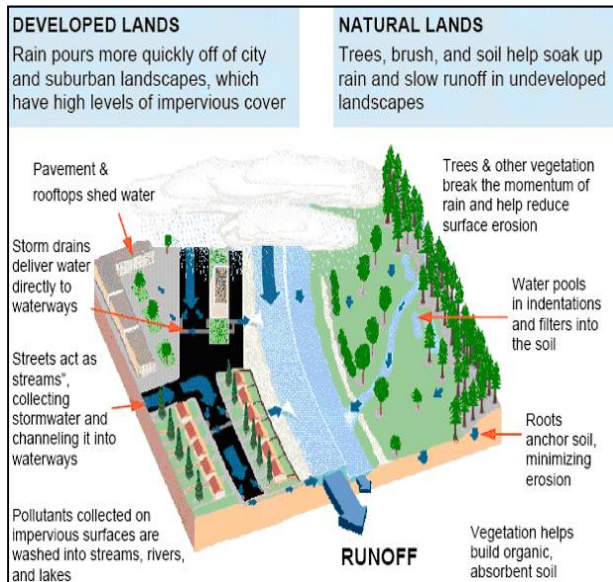


**March 2011**

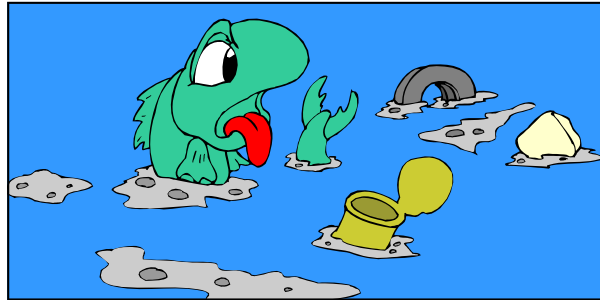
## What is Stormwater?

**Stormwater** is rain and melted snow that runs off surfaces such as roofs, lawns, driveways, parking lots and roads. Stormwater collects debris and chemicals from these surfaces, which then travel through the storm sewer system. Any debris or chemicals that are washed from the exposed surfaces become trapped in the storm sewer system.

Stormwater is collected in **storm drains** or **catch basins** and flows through pipes and ditches until it eventually reaches a nearby lake or stream. Stormwater does not usually receive treatment before entering a water body.



## Stormwater Pollutants



Common sources of stormwater pollution include:

- **Garbage & Debris**  
(cigarette butts, leaves, litter)
- **Oil & Grease**
- **Gasoline**
- **Automotive Products**  
(antifreeze, brake fluid, sealers)
- **Cleaning Products**  
(car wash detergents, cleansers)
- **Lawn & Garden Products**  
(weed killers, pest control products)
- **Other Chemicals**  
(paints, solvents, varnishes)
- **Pet Wastes**

Proper disposal of wastes will aid in protecting the bodies of water that receive stormwater.

Please visit [www.yellowknife.ca](http://www.yellowknife.ca) to find out where to dispose of these and other types of wastes.

## Stormdrain Marking Program

Metal markers are being installed on catch basins in Yellowknife, reminding residents that water entering the catch basin flows directly into nearby lakes.



Prior to the metal markers, blue fish were painted beside each catch basin in the City.

